



SOLD

STYLISH EXECUTIVE LIVING !

SOLD !! AGAIN BY FOR RECORD PRICE BY NANCY BIRD @realty if you would like an appraisal and want the best result for your biggest asset call Nancy Bird on 041 555 8594 you cant afford not to!

Nancy Bird is Proud to Present this Stylish "AS NEW" Beautifully Presented Executive Apartment with 2 Spacious Bedrooms, 1 large Bathroom, plus Big Balcony and Separate large Storage Room right next door for convenience, in a modern, well maintained Security Building with Intercom Access and Private Gated Security Carpark. Boasting, as one of the larger apartments in the building, in the most sought after location in The City Of Cockburn, in a family orientated pristine suburb of Harvest Lakes, Atwell, with less than a minutes walk to Aubin Grove Train Station, straight to Perth CBD and Harvest Lakes Shopping Complex with Woolworths Supermarket and a variety of shops, restaurants and cafes as well as easy freeway access. Close by to award winning Atwell and Aubin Grove Primary Schools, Atwell College and Gateway Shopping Precinct, viewing this impressive "Stylish Executive Apartment" will impress the fussiest of Buyers to nest or invest ! Presented beautifully "AS NEW" and vacant ready to move into ASAP ready for the Christmas Holidays, with brand new neutral décor ,new Paint, new quality plush Carpets with underlay and new modern window treatments throughout - there's nothing to do just move in and enjoy!

This stunning apartment spacious floorplan, boasts a large Open Plan Living with stylish large Kitchen with extra long Breakfast Bar, Lounge Area and Dining Area leading directly out to the big Balcony where you can relax and enjoy outdoor living space as well.

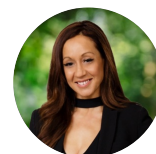
This spacious functional Kitchen size is usually found in houses, with an extra long and wide Island bench/ breakfast bar comfortably seating four, with power points at the end, with under bench cupboards, large pantry, large fridge recess, double sink with drainer, dishwasher recess, plenty of over head storage cupboards, Induction Stove Top, new Rangehood and Under Bench Oven, with this good sized Kitchen you can easily cook up a storm and entertain in your stunning apartment.

The well designed big open light filled Lounge and Dining Area's are stylish and inviting, with plush brand new quality carpets with underlay, large bright windows and TV Point.

2 BED | 1 BATH | 1 CAR

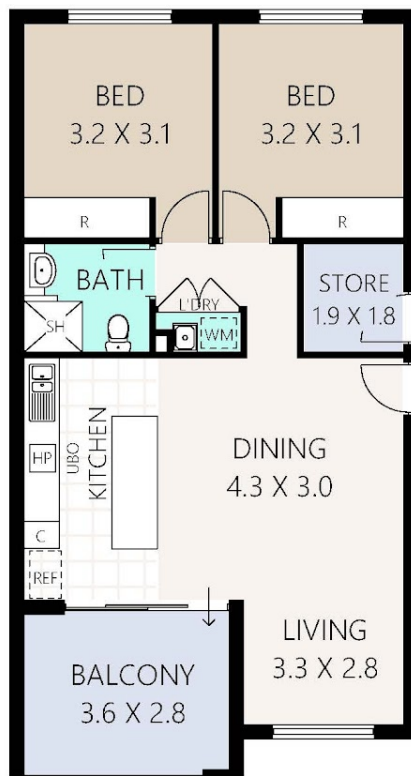
PRICE:
\$435,000

OPEN FOR INSPECTION:
N/A



Nancy Bird
0415558594

nancybird@atrealty.com.au
www.atrealty.com.au



28 / 55 Flourish Loop, Atwell

TOTAL AREA - 82.8m²

PLAN IS APPROXIMATE AND REPRESENTATIONAL ONLY
TATEFLOORPLANS.COM.AU

Disclaimer: Please note this floor plan is for marketing purposes and is to be used as a guide only. All dimensions are estimates only and may not be exact measurements.