



FOR SALE

SOLD BY ROBYN HUNT REAL ESTATE

Welcome to this exceptionally rare slice of paradise, where your days can be spent soaking in the views and reveling in the privacy of lush green trees and an abundance of beautiful bird life.

This 4 bedroom, 2 bathroom home is filled with a wonderful sense of heart and soul, and sits on an expansive 8,745m² of pure tranquility. Tucked away at the end of the circular drive, your curiosity will immediately be piqued as the home unfolds before you.

Crafted to balance warmth with functionality, you'll fall instantly in love with the rich hardwood timber floorboards flowing beautifully in sync with the breathtaking views and light-filled spaciousness of the living and dining rooms. Large timber and glass sliding doors then continue to entice you deeper into the property as you step out onto the expansive deck - bringing you even closer to the captivating views that seemingly go on forever.

Providing a delightful space in which to create your favourite dishes is the centrally placed galley style kitchen. Overlooking the dining and deck area, with a dishwasher and induction cooktop, you can simultaneously be social and entertain while taking in the views.

A fantastic history-filled study is located adjacent to the music/reading area and has its own private access - ideal for those wanting a work from home space with a good dash of character.

Family living is catered for with the large main bedroom upstairs highlighting large windows creating a picture frame of views you don't even have to leave the comfort of your bed to indulge in. Downstairs sees 3 additional bedrooms with built-in wardrobes, a second bathroom, plus a very handy storage room for the seasonal necessities.

This is the perfect home for hosting summer dinner parties while enjoying delicious cooling breezes that make their way through the trees, snuggling up for cozy family nights in front of the fireplace, or simply living in the comfort provided all year 'round by reverse-cycle air-conditioning.

But it doesn't stop there. Step outside and you'll soon find yourself meandering through your very own private "bird park" filled with wondrous natural delights. There's even plenty of flat space for the swings, trampoline, caravan or even a pool!

A stone's throw from a multitude of shops, dining options, schools, sporting facilities and more

4 BED | 2 BATH | 2 CAR

PRICE:
Contact Agent

OPEN FOR INSPECTION:
N/A



Robyn Hunt
0448448758
robyn@atrealty.com.au
www.atrealty.com.au

9 Hillcrest Avenue, Goonellabah



4

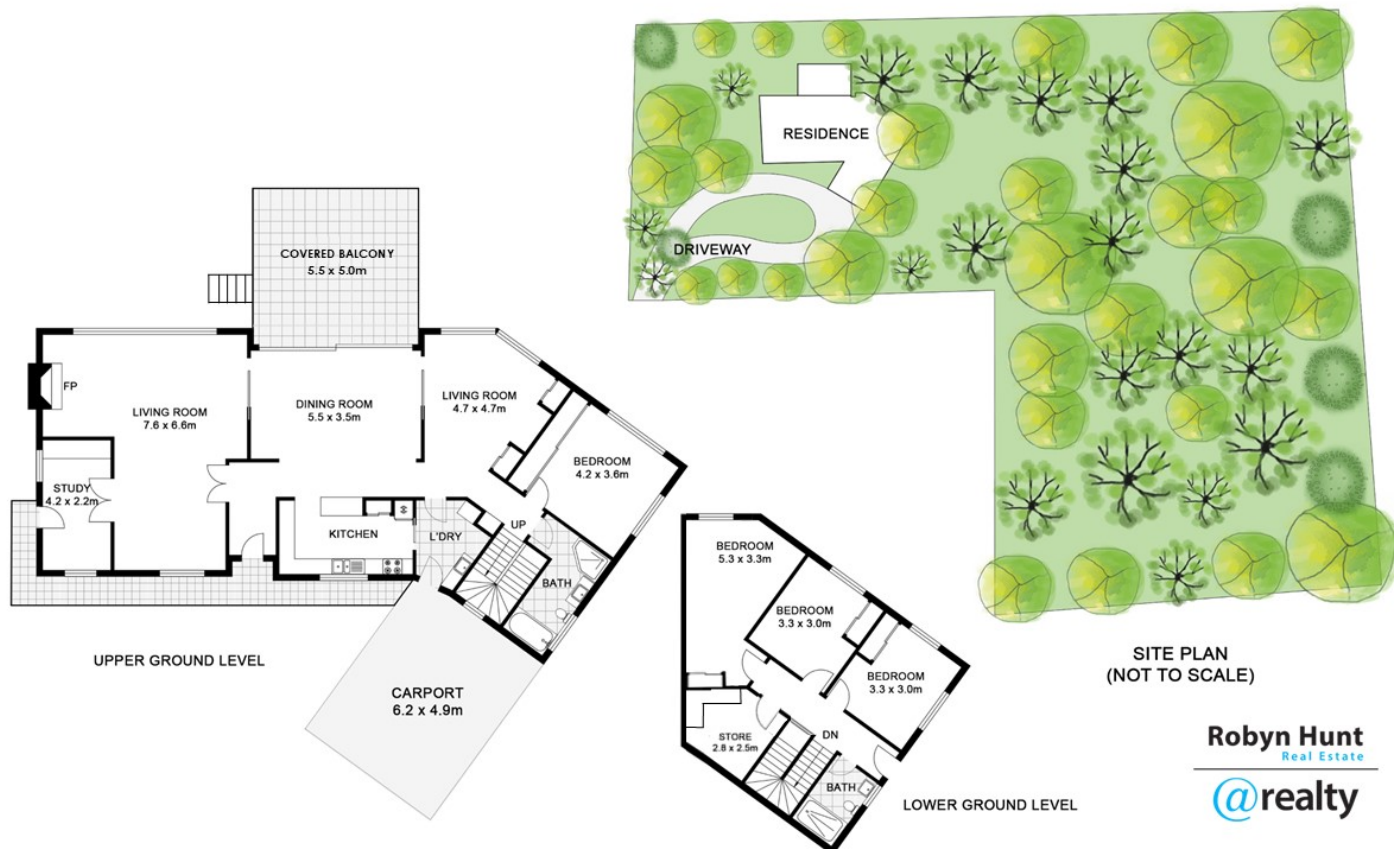


2



2

APPROXIMATE AREAS
INTERNAL: 189m²
EXTERNAL: 71m²



Disclaimer: Please note this floor plan is for marketing purposes and is to be used as a guide only. All dimensions are estimates only and may not be exact measurements.