



SOLD

SOLD BY ROBYN HUNT REAL ESTATE

Seeking a semi-rural lifestyle, with a generous and stylishly renovated home, on a predominantly level block? Look no further.

Set on an idyllic 3178m² (over ¾ acre!) this property presents a brilliant place to make your dreams come true. Located in quiet cul-de-sac on the beautiful northern ridge of Richmond Hill the property is fully fenced for the kids and pets, and showcases a massive, level backyard with loads of room for a granny flat AND a swimming pool (subject to council approval) if you so desire.

With a double shed already in place, plus a double carport and optional double garage, you'll easily have more than enough parking for the whole family - along with the caravan, boat, and big toys.

Extensively renovated inside and out, the heart of the home is the gorgeous kitchen with decadent butler's pantry and a whole host of indulgent features. Overlooking the lounge room and dining area, access is easy to the huge 60m² covered alfresco entertaining area and adjacent firepit zone.

For those who require a separate media/rumpus room, home gym/office space, or brilliant kids play room, the original double garage has already been converted to cater to those needs and even provides views to distant mountain ranges. This space could easily be reinstated back to a garage if that is your preference.

Family and friends are easily accommodated by the five bedrooms that are thoughtfully located, with the main bedroom situated at one end of the house and including a stunning new ensuite, beautiful outlook, and great storage.

With a list of new features that truly seem as long as your arm (including a 10.2kw solar system, 900mm gas cooktop, ducted air-conditioning throughout, freestanding bath, updated septic system, modern flooring, and more) this property offers a fantastic lifestyle opportunity, and is an absolute must-see.

Just over 6 km's from the Goonellabah Shopping Village and city conveniences, and a 28 km drive to stunning beaches, this very special offering quite frankly 'adds-up'. The location adds

5 BED | 2 BATH | 4 CAR

PRICE:
\$1,125,000

OPEN FOR INSPECTION:
N/A

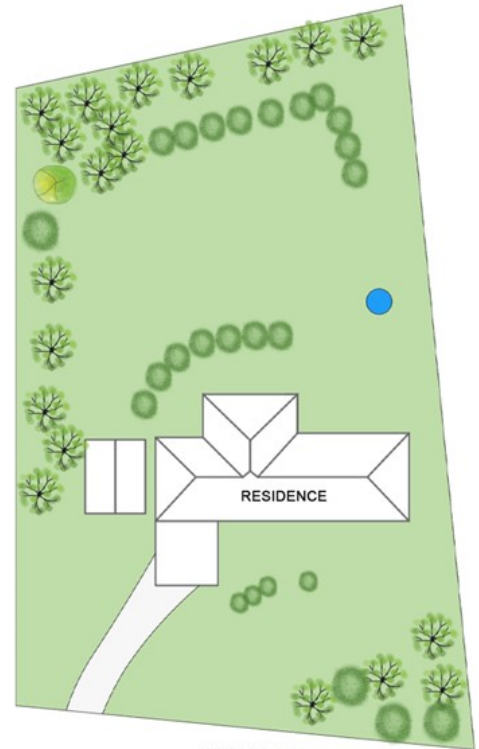
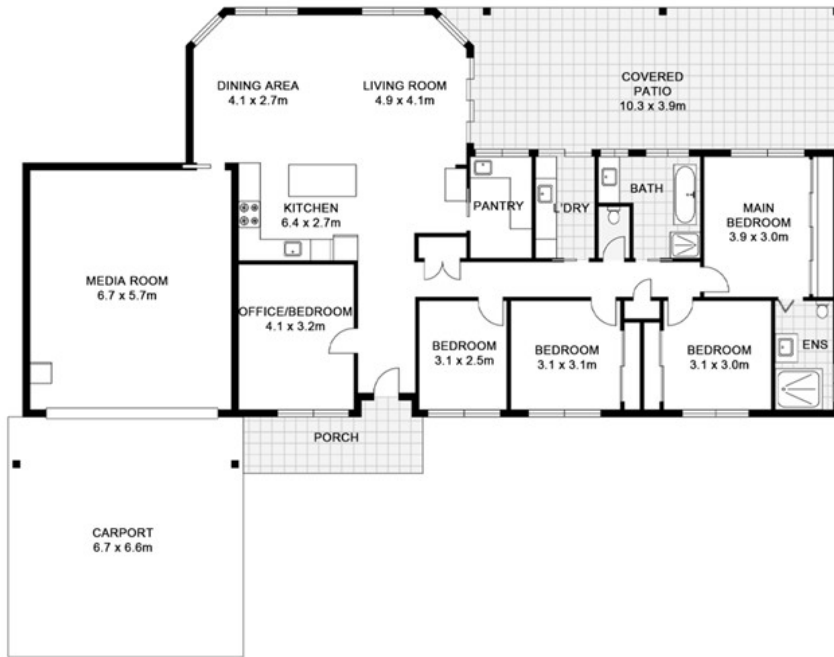
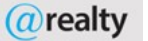


Robyn Hunt
0448448758
robyn@atrealty.com.au
www.atrealty.com.au

39 Whispering Valley Drive, Richmond Hill



APPROXIMATE AREAS
INTERNAL: 184m²
EXTERNAL: 92m²



SITE PLAN
(NOT TO SCALE)

Disclaimer: Please note this floor plan is for marketing purposes and is to be used as a guide only. All dimensions are estimates only and may not be exact measurements.