



SOLD

**BEAUTIFUL PERIOD 3+ BEDROOMS
RENOVATED - MASSIVE SHEDS. 10 MINUTES TO
KYOGLE - NEW PRICE.**

360 degrees views on 2 acres (approx.) close to the Summerland Way and Kyogle (10minutes), Lismore (30 minutes)and Casino (20 minutes).

Position, Position, Position! Offers over \$875,000

For the horse person, truckie, or trades person the potential is huge. Edenville Equestrian centre is your western neighbour. Huge storage sheds all concreted, weather proof and lockable.

The beautiful family home built in the early 1900s has all original features retained with high ceilings, renovated kitchen, bathroom and living areas to include fires and air-conditioning plus solar power recently installed.

Family owned for over 40 years, this beautifully laid out family home on top of the hill has mature gardens and lawns which compliment the sprawling home with covered north east facing veranda leading down to the sheds. On Kyogle's doorstep!

Some property features include:

- + Recent large solar power system installed.
- +The house area boasts two air conditioners, gas heating plus fireplace and combustion fire.
- + Main bedroom has a fireplace and air conditioning while the two other large bedrooms lead out to the sunroom/sleepout through double doors. The carpeted bedrooms lead out to the timber floored sleepout. All with high ceilings.
- + The lounge has a TV and fireplace (combustion) in the centre of the home.
- + The office area leads to the kitchen which is modernised and large enough for a family dining area. It has modern appliances along with air-conditioning.
- + The central bathroom has a bath and shower with toilet and vanity unit.
- + Nearby the large laundry leads to the outside with ample space and also a second toilet.

The hero is the massive shed approx. 16 metres wide and 34 metres long split into 5 sections including a breezeway for a truck bay. The sheds are lockable and have sliding and roller doors. This area is also a great place for children to play under cover, shoot hoops, table tennis and other activities.

4 BED | 1 BATH | 7 CAR

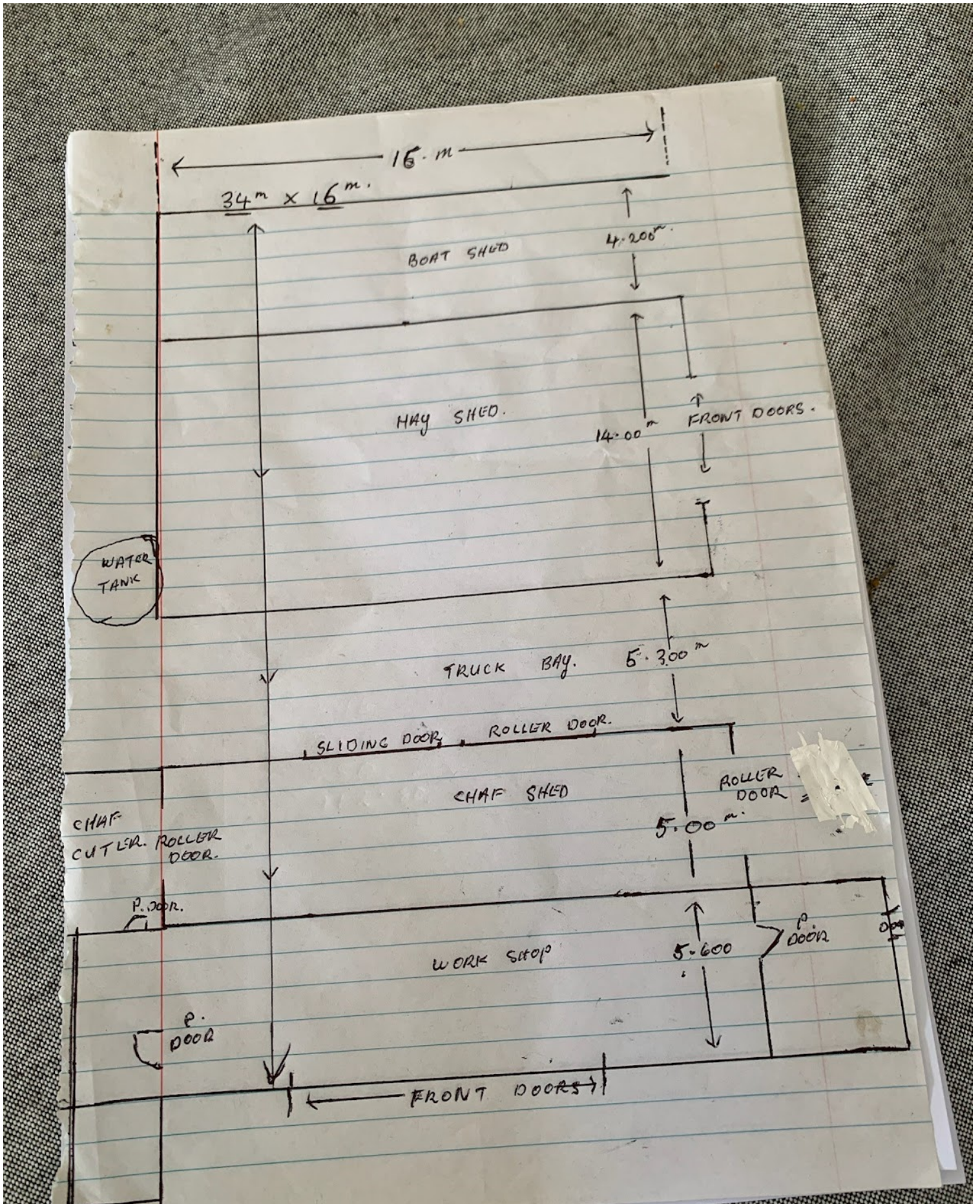
PRICE:
\$850,000

OPEN FOR INSPECTION:
N/A



Murgha Mack
0414666970

murghamack@atrealty.com.au
www.atrealty.com.au



Disclaimer: Please note this floor plan is for marketing purposes and is to be used as a guide only. All dimensions are estimates only and may not be exact measurements.