



SOLD

BEAUTIFUL 3 BEDROOM TOWNHOUSE: A PERFECT PLACE TO CALL HOME!!

Welcome to the heart of Glenroy, where this classic townhouse offers an idyllic lifestyle and endless opportunity.

This three-bedroom, one-bathroom townhouse provides a wonderful opportunity to own a stylishly designed residence in a highly sought-after location, making it ideal for families or even those looking to downsize or invest.

The exterior of this classic Victorian townhouse has been lovingly maintained and its solid brick construction, painted in a classic white, gives you a sense of timelessness and style.

The interior is just as impressive, with bright and airy living and dining spaces, perfect for entertaining. The modern kitchen is the perfect spot for the cooking enthusiasts with benchtop and storage space, as well as modern appliances.

The three bedrooms are all generously sized and are serviced by a full bathroom, complete with a bathtub. What's more, the home comes with a single lock-up garage, ideal for secure car storage.

The property is situated in a great location, close to a range of amenities, including shopping centres, supermarkets, restaurants and cafes and Northern Golf Club. Public transport is also easily accessible, making it easy to get around Melbourne.

This is a perfect choice for owner-occupiers and investors alike, whether you're nesting or investing, call Jag on 0493 689 449 to register your interest today!

(Please note some images may contain virtual images and updates.)

3 BED | 1 BATH | 1 CAR

PRICE:
\$600,000

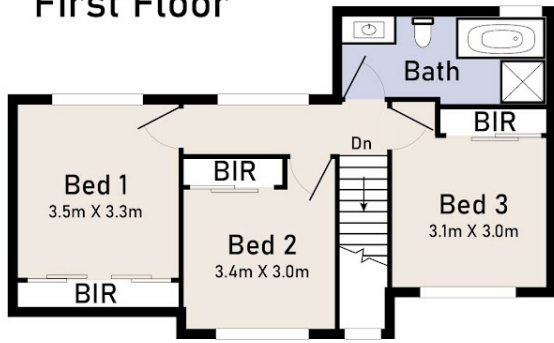
OPEN FOR INSPECTION:
N/A



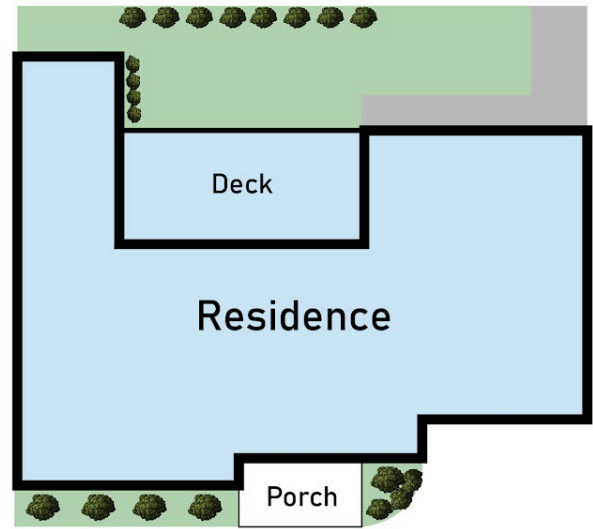
Jag Duggal
0493689449

jag.duggal@atrealty.com.au
www.atrealty.com.au

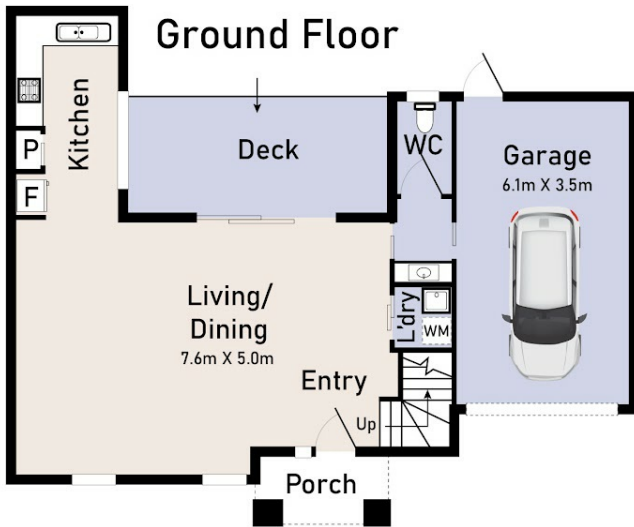
First Floor



Site Plan



Ground Floor



2/43 Cosmos Street Glenroy

Layout dimensions are approximate and for illustrative purposes only. No representation or warranties of any nature whatsoever are given or intended. Any person using this information should rely on their own enquiries.



Disclaimer: Please note this floor plan is for marketing purposes and is to be used as a guide only. All dimensions are estimates only and may not be exact measurements.