

SOLD

DISCOVER YOUR DREAM FAMILY HOME IN THE BERWICK WATERS ESTATE

Welcome to this stunning family home offers a perfect blend of style, comfort, and convenience in the Berwick Waters Estate. Let's take a closer look at the features of this remarkable property:

Land: Boasting a generous east facing land size of 512sqm (16m x 32m)

House Size: The spacious 30 square house offers an abundance of living space, including 4 bedrooms, 1 study, and a double garage with internal and external access.

Energy Efficiency: Enjoy the benefits of solar panels, helping to reduce your energy bills.

Security: Feel safe and secure with a security alarm system.

Climate Control: Stay comfortable year-round with evaporative cooling and ducted heating.

High Ceiling: The home features high ceilings, adding to the sense of space and grandeur.

Premium Finishes: Throughout the home, you'll find stone benchtops, including the laundry, adding a touch of elegance to your living spaces.

Ample Living Areas: With 3 living areas and a study, there is plenty of room for the whole family.

Modern Appliances: The kitchen boasts high-quality Smeg appliances, a 3750mm long stone island benchtop ensuring your culinary endeavours are a breeze.

Stylish Touches: Enhance the aesthetics of your home with plantation shutters and downlights.

Outdoor Living: Enjoy outdoor entertaining with a decked alfresco and pergola area, perfect for hosting gatherings or relaxing with family.

Low-Maintenance: The front yard is designed for easy upkeep, allowing you to spend more time enjoying your home and less time on maintenance tasks.

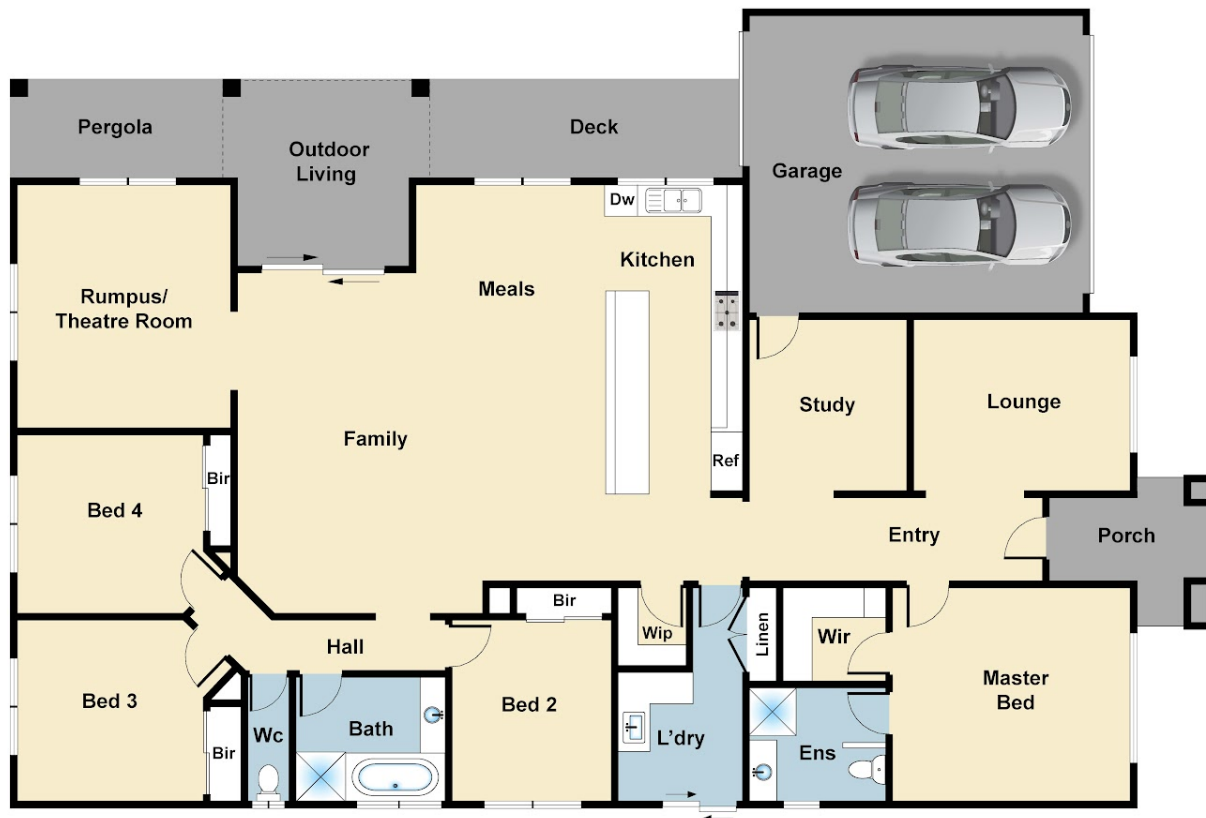
4 BED | 2 BATH | 2 CAR

PRICE:
\$920,000

OPEN FOR INSPECTION:
N/A



Leon D'Penha
0415205032
leon.dpenha@atrealty.com.au
www.atrealty.com.au



FLOOR PLAN

The floor plan is not to scale. Areas and dimensions are approximate and therefore plan should only be used for illustrative purposes.

CONNECT
ESTATE AGENTS

Disclaimer: Please note this floor plan is for marketing purposes and is to be used as a guide only. All dimensions are estimates only and may not be exact measurements.