



SOLD

BRILLIANT LOCATION - BEAUTIFUL, LIGHT-FILLED HOME

Whether you are seeking a great opportunity to start or expand your investment portfolio, looking for a fantastic place to start a family, or searching for a home to spend your days in peaceful retirement, this is a property that you really should see.

Featuring a highly functional layout, and set on a level and fenced 785m2 block in a sought-after and central location, this is one to stand the test of time.

Living is easy here with a modern, new kitchen with stone bench tops at the heart of the home and overlooking the covered outdoor entertaining area and rear yard. Easily accessed from the dining room, family room, meals area and living room you will be impressed by the amount of storage space on offer.

The main bedroom is set away from the living areas and includes an ensuite with double vanity, and a walk-in wardrobe. The additional 2 bedrooms are just as light-filled as the rest of the house, and include built-in wardrobes and easy access to the convenient 3-way bathroom.

Enjoy complete comfort in all seasons with the reverse-cycle air-conditioning, plus handy internal access to the double garage to make getting the family and groceries inside that bit easier.

Double side gates allow access to the rear yard for large toys, and a garden shed is already in place providing an additional storage option. Furthermore, this area presents plenty of space and security for pets and children to play, with additional room for veggie beds and/or a swimming pool.

Alstonville is a great suburb to call home, with easy access to all amenities, schools and attractions. A short walk will soon see you at the Bowling Club, or in the heart of town - with it's iconic pub plus a wonderful selection of shops, cafes, restaurants, sporting facilities and more. For those who love the ocean or river, beautiful Ballina and the Pacific Ocean is less than a 20km drive away.

This property offers the perfect combination of family-friendly features and investment potential. Don't miss out, contact Robyn Hunt today on 0448 448 758 to arrange an inspection.

3 BED | 2 BATH | 2 CAR

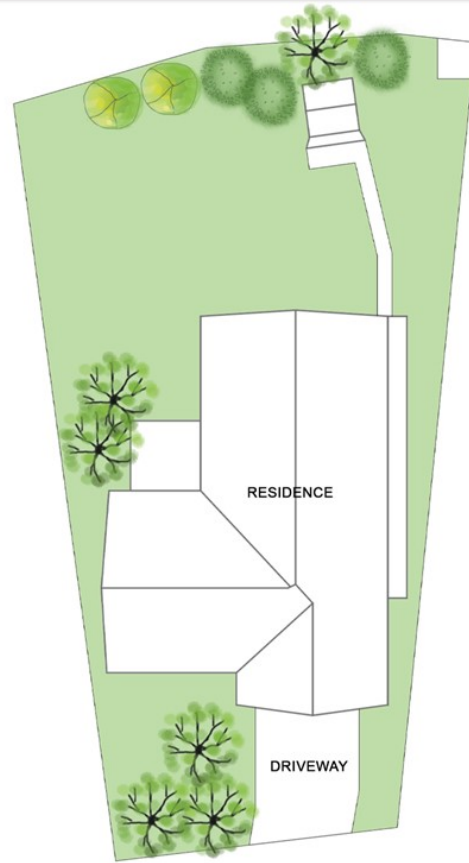
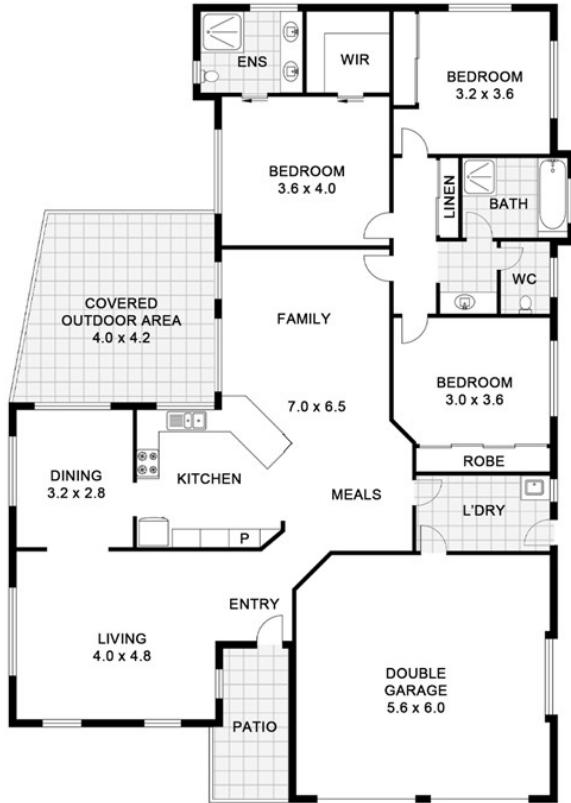
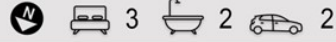
PRICE:
\$875,000

OPEN FOR INSPECTION:
N/A



Robyn Hunt
0448448758
 robyn@atrealty.com.au
www.atrealty.com.au

46 Adele Street, Alstonville



SITE PLAN
(NOT TO SCALE)

Disclaimer: Please note this floor plan is for marketing purposes and is to be used as a guide only. All dimensions are estimates only and may not be exact measurements.