

4/1 YARRUM GROVE, SOMERTON PARK, SA, 5044



**SOLD**

**METRES TO THE BEACH - SMALL SEA VIEW -  
LOVELY OUTLOOK TO HILLS - 2 BEDROOMS -  
SMALL GROUP OF 4**

Superbly located amidst the sea air from beautiful Somerton Beach, this light and airy upstairs unit provides a lovely glimpse of the sea and also an extensive outlook to the East over the suburb to the hills.

It consists of 2 bedrooms (both with built-in robes), open plan living area leading to a private balcony, spacious kitchen/dining area, sparkling bathroom, laundry facilities (adj kitchen) and a private carport.

1 Yarrum Grove, Somerton Park is a prime beachside location offering a fabulous lifestyle of visits to the beach, walks, coffees and within easy reach of the Glenelg and Glenelg South shopping and entertainment precincts.

A great opportunity awaits.

RLA 298528 RLA 269823

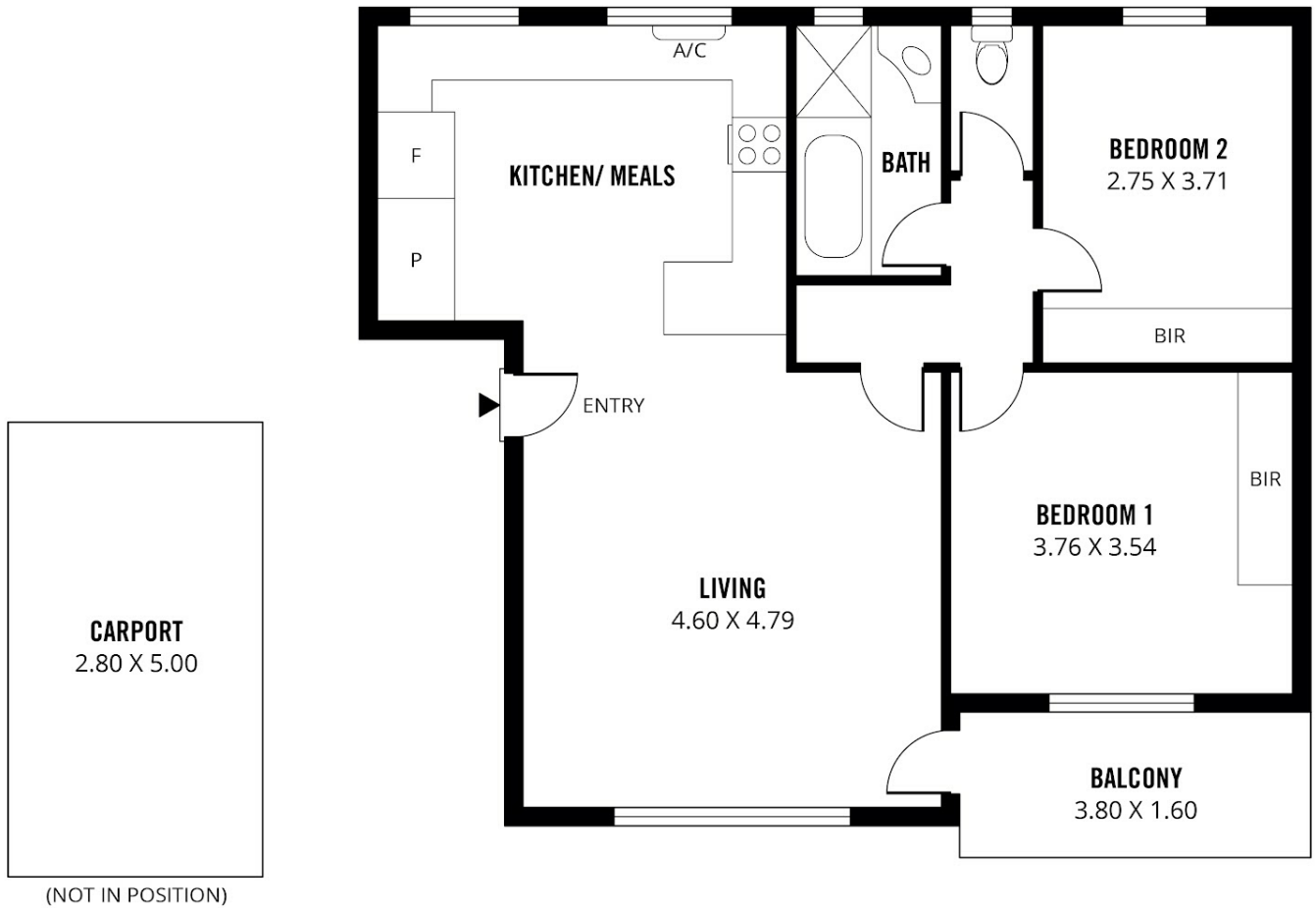
**2 BED | 1 BATH | 1 CAR**

**PRICE:**  
**\$605,000**

**OPEN FOR INSPECTION:**  
**N/A**



**Simon Tait**  
**0419853945**  
simon@taitre.com.au  
taitre.com.au  
RLA: 269823



Scale in metres. This drawing is for illustration purposes only. All measurements are approximate and details intended to be relied upon should be independently verified.

Produced by **The Fotobase Group**

Disclaimer: Please note this floor plan is for marketing purposes and is to be used as a guide only. All dimensions are estimates only and may not be exact measurements.