

**SOLD**

## EXCEPTIONAL 4-BEDROOM HAVEN IN WYEE - NEAR NEW AND PACKED WITH EXTRAS!

Discover the epitome of contemporary living in this immaculate 4-bedroom brick and tile residence, nestled in the highly convenient suburb of Wyee. Situated just minutes away from local schools, shops, medical facilities, parks, beaches, and the M1 Motorway, this property promises a lifestyle of ease and accessibility.

### Key Features:

- Bedrooms: Four generously sized bedrooms, all featuring built-in wardrobes, provide comfortable accommodation for the entire family.
- Master Suite: The main bedroom stands out with a walk-in robe and a luxurious ensuite, offering a private retreat within the home.
- Living Spaces: Embrace the airy and open-plan design of the living areas, promoting a seamless flow throughout the home for versatile living and entertaining.
- Kitchen: A chef's delight awaits in the expansive kitchen, boasting stone benchtops and modern appliances. This culinary haven is perfect for creating delicious meals and hosting gatherings.
- Energy Efficiency: Take advantage of the included solar panels, contributing to both sustainability and potential cost savings on energy bills.
- Garage: Enjoy the convenience of a double lock-up garage with an automatic door, ensuring secure parking for vehicles and additional storage space.
- Low Maintenance Backyard: The property features a low-maintenance level backyard, providing a perfect balance of outdoor space without the hassle of extensive upkeep.
- 4 Zone Daiken ducted A/C with wifi compatibility

Don't miss the opportunity to make this residence your own - a blend of modern luxury, thoughtful design, and a prime location. Contact us now to schedule a viewing and experience the unparalleled lifestyle this property has to offer!

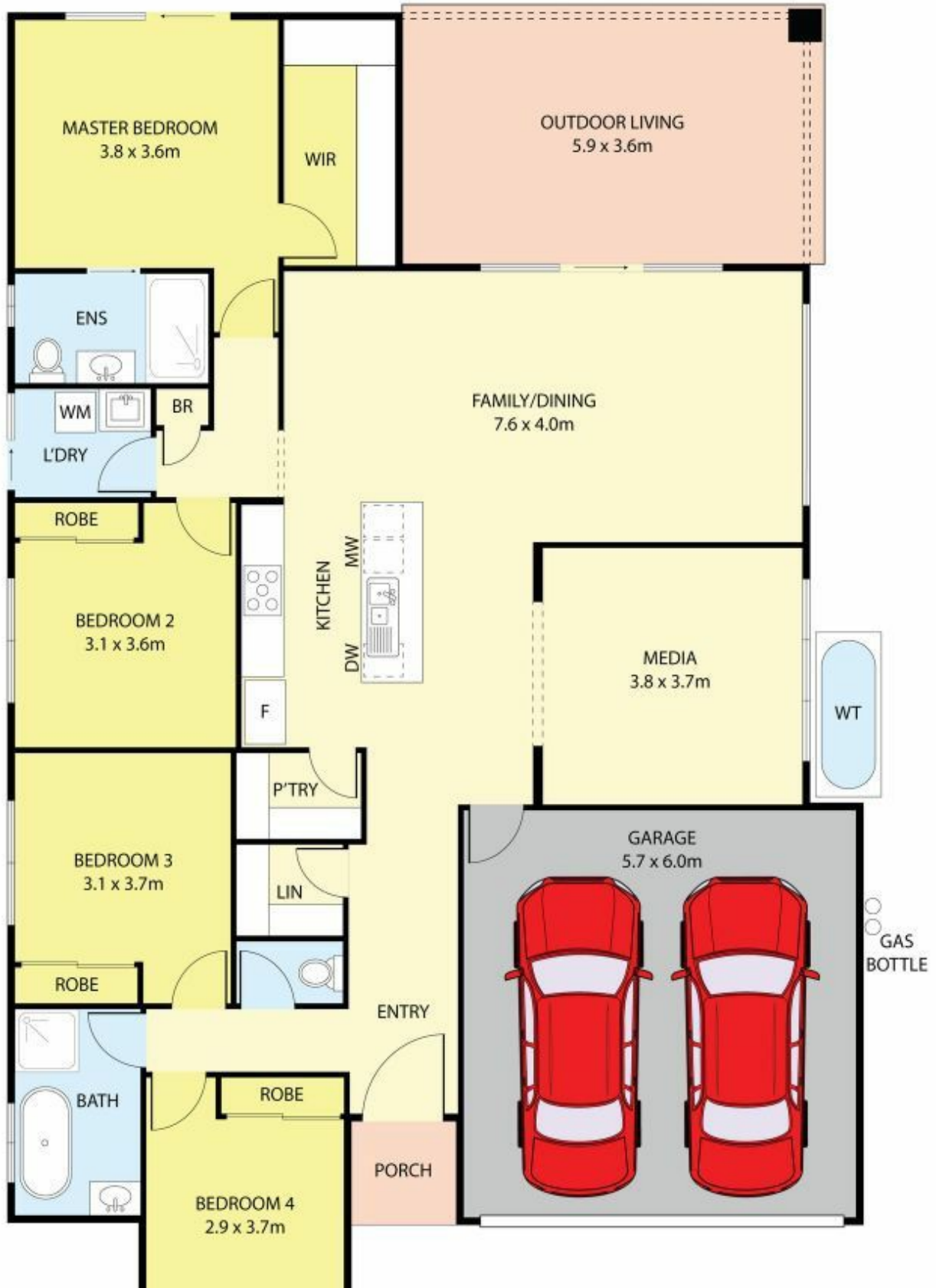
4 BED | 2 BATH | 2 CAR

PRICE:  
\$847,000

OPEN FOR INSPECTION:  
N/A



**Brad Barker**  
**0413875833**  
bradbarker@atrealty.com.au  
[www.atrealty.com.au](http://www.atrealty.com.au)



Disclaimer: Please note this floor plan is for marketing purposes and is to be used as a guide only. All dimensions are estimates only and may not be exact measurements.

Scale in metres. Indicative only. Dimensions are approximate. All information contained herein is gathered from sources we believe to be reliable. However we cannot guarantee its accuracy and interested persons should rely on their own enquiries



Brad Barker  
 0413875833  
 bradbarker@atrealty.com.au  
[www.atrealty.com.au](http://www.atrealty.com.au)

