

SOLD

TRANQUILITY & LOCATION IN SCARBOROUGH!

Welcome to your Tranquil Oasis in the heart of Scarborough. This charming 4 bedroom, 2 bathroom, double story home sits on a generous 403 square metre block and offers the perfect blend of traditional charm and modern convenience.

As you enter the property, you are greeted by a lush, manicured Courtyard, a Gorgeous Water Fountain, and a Lovely Avery with the most Adorable Birds. You can definitely "Feel the Serenity!"

Step inside and you will find a home with generous internal proportions, and a perfect mix of indoor and outdoor living.

On the ground floor, you will find a generous Living area, that Flows to the Dining Area, a great sized rumpus room which can also be the 4th Bedroom, and a stunning Modern Kitchen featuring all the latest appliances - including a 900mm wide Cooker. Completing the ground floor is the 2nd Living space drawing you through the french doors to the back entertaining area – the perfect place for you to relax and entertain your friends and family. There is also a separate Toilet downstairs.

Ascend the stairs to the upper level and you will find three generous bedrooms, all with built-in wardrobes = (Master with walk in) air-conditioning and beautiful floorboards. There is a Large Bathroom that also allows access from the 2nd bedroom - Perfect for Guests!

The property also boasts a water tank and a fully-fenced yard. The Spacious Garage has a Remote Door allowing you to drive in securely.

This truly is a home like no other. With its desirable location, generous proportions, this property is the perfect family home. Don't wait – book an inspection today and experience this beautiful home for yourself.

To arrange your Private Inspection, please call Phill Healey on 0414 452 244

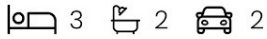
4 BED | 2 BATH | 2 CAR

PRICE:
\$1,000,000

OPEN FOR INSPECTION:
N/A



Phill Healey
0414452244
phill.healey@atrealty.com.au
www.atrealty.com.au

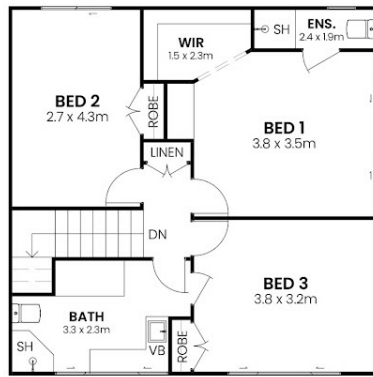


DISCLAIMER

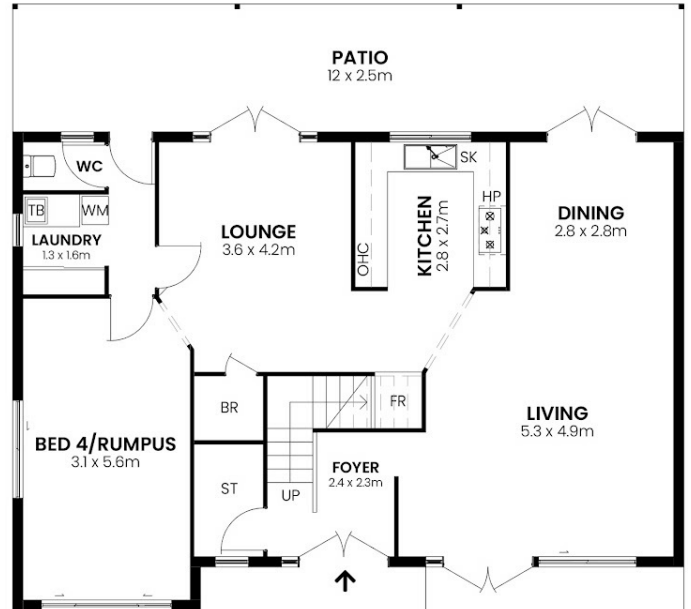
This illustration has been drawn accurately. However, interested parties should consult official architectural drawings for specificity regarding areas and dimensions.

Abbreviations:

- BR:** BROOM CLOSET
- ENS:** ENSUITE
- DW:** DISH WASHER
- FR:** FRIDGE
- HP:** HOT PLATE
- LDY:** LAUNDRY
- OHC:** OVER HEAD CUP.
- OV:** OVEN
- PT:** PANTRY
- SK:** SHOWER
- SH:** SINK
- ST:** STORAGE



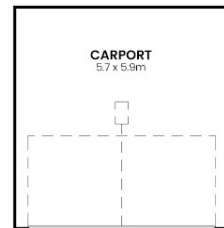
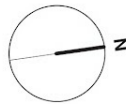
FIRST FLOOR



GROUND FLOOR

Areas (GF):	
LIVING	102m ²
PATIO	29m ²
COURTYARD	28m ²
Areas (FF):	
LIVING	61m ²
Overall	220m²

Ceiling Height	
GROUND	2.4m
FIRST	2.7m



Disclaimer: Please note this floor plan is for marketing purposes and is to be used as a guide only. All dimensions are estimates only and may not be exact measurements.