



SOLD

IMPRESSIVE APARTMENT WITH FANTASTIC VIEWS

Whether you are seeking your first home, a base for a UQ student or an easily rentable investment you need look no further than this beautifully presented apartment. Located on Level 10 in the well positioned Landmark complex, it provides safety and security, light-filled spacious living, and uninterrupted views to Mt Coot-tha. The galley style kitchen has an abundance of storage while the living area has a built-in entertainment unit and workstation. Contemporary neutral tones, air-conditioned comfort, a spacious modern bathroom with walk in shower and a hideaway laundry make for easy care living. Double glazed windows provide excellent sound proofing so the proximity to the train line is of no concern.

Landmark Toowong offers the discerning buyer the ultimate in chic apartment living – quality, lifestyle, and convenience. Open plan designs with clean lines and quality European appliances; sun deck with pool and BBQ area; air-conditioned gym; security and on-site management are some of the features loved by residents. This highly desirable and leafy pocket of Toowong provides access to a diverse lifestyle which combines the atmosphere and amenities of the suburbs with the buzz of the business and entertainment precinct of the CBD, just under 4 km away. City fringe living by the river with only a short walk to the iconic Regatta Hotel, riverside cycle and walking track or bus, city cat and train services.

Available for sale with or without the furniture and appliances as displayed – excludes decorator items and soft furnishings.

Apartment Features:

- * 63 sqm living space
- * Level 10 location with views to Mt Coot-tha
- * Stone bench tops, LED lighting, large pantry, broom cupboard
- * Bosch stainless appliances
- * Built in entertainment unit and workstation
- * Panasonic split system air conditioning to living and bedroom
- * Generous sized bedroom with built in robe
- * Modern bathroom with walk in shower and floor to ceiling tiles
- * Hideaway laundry with washing machine and dryer
- * Secure basement parking for one vehicle

1 BED | 1 BATH | 1 CAR

PRICE:
\$410,000

OPEN FOR INSPECTION:
N/A



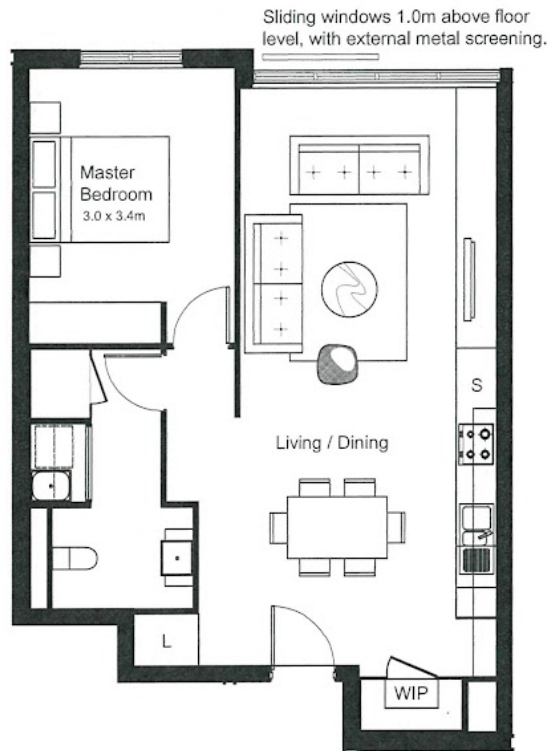
Sue Barnes
0418988715
suebarnes@atrealty.com.au
www.atrealty.com.au

1 BEDROOM 1 BATH 1 STUDY NOOK

APARTMENT TYPE 1D - "The Parisian"

APARTMENT SUMMARY

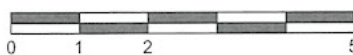
APT No.	INT	EXT	TOTAL
309	63m ²		63m ²
409	63m ²		63m ²
509	63m ²		63m ²
609	63m ²		63m ²
709	63m ²		63m ²
809	63m ²		63m ²
909	63m ²		63m ²
1009	63m ²		63m ²
1109	63m ²		63m ²
1209	63m ²		63m ²



FEATURES

- Extra Large Living Area
- Stainless Steel Appliances
- Air Conditioning
- Generous sized Bedroom
- 1 Study desk and wall length cabinetry in Living/Dining
- Walk-In Pantry

SCALE (m)



KEY

- L Linen
- WIP Walk-In Pantry
- S Study Nook



Disclaimer: Please note this floor plan is for marketing purposes and is to be used as a guide only. All dimensions are estimates only and may not be exact measurements.