



SOLD

ANOTHER ONE SOLD BY MICK WELLS!

Welcome to the ultimate suburban retreat! Nestled in the popular suburb of Oxenford, this stunning two bedroom, one bathroom unit provides you with a unique lifestyle experience and all the conveniences of modern living. This is only one of two duplexes on the allotment, and presents a rare opportunity to enter the market, and avoid the arduous task of overbearing large and "fun police" body corporates.

This bright and airy open plan unit is ready for you to move in and make it your own. The functional kitchen features a dishwasher and microwave and plenty of space for meal preparation, while the light open living area is perfect for entertaining and making memories. Enjoy the convenience of two generous bedrooms fitted with built-in wardrobes, plus a modern bathroom with all the fixtures and fittings.

On a spacious 344m² of land, the outdoor area is ideal for hosting friends and family all year round. Start your day with a cup of coffee on the deck, then utilise the outdoor entertainment area for alfresco dining and drinks as the sun sets. With a fully fenced yard, extra secure parking, and a remote garage, you can feel relaxed and safe in your home.

This property really does offer it all, with features such as air conditioning and built-in wardrobes. With a generous duplex plan, you can enjoy the luxuries of modern living without the expensive price tag.

You will love the location of this unit, close to all the amenities Oxenford has to offer. Enjoy shopping, dining, and entertainment options nearby, plus very easy access to transport links and major highways.

Don't miss this opportunity to make this stunning unit yours. Move in today and enjoy a lifestyle you won't want to leave!

Call Mick Wells Today on 0408537567 for details on how to view

2 BED | 1 BATH | 1 CAR

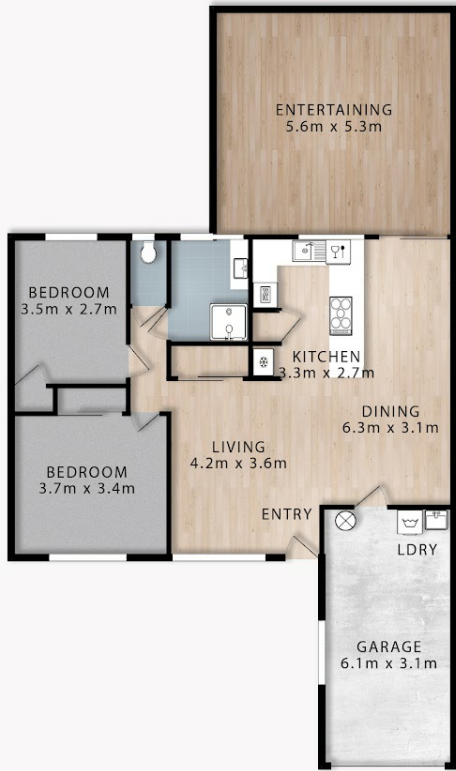
PRICE:
\$635,000

OPEN FOR INSPECTION:
N/A

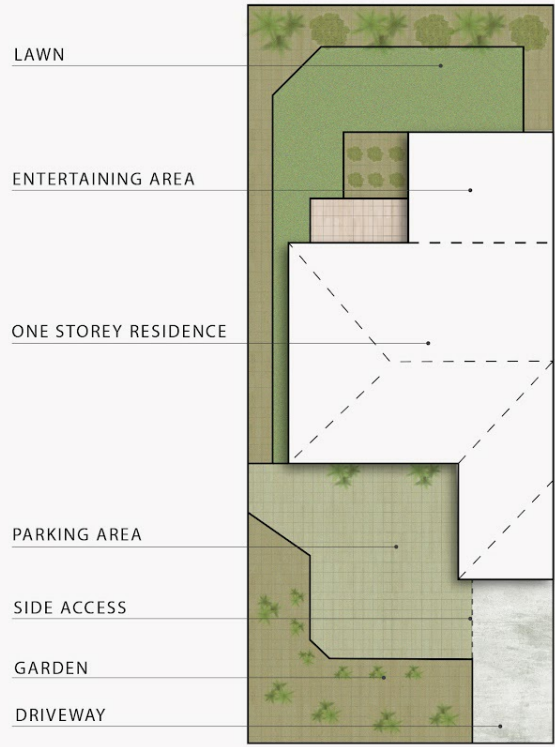


Mick Wells
0408537567
mickwells@atrealty.com.au
www.atrealty.com.au

FLOOR PLAN



SITE PLAN



2/12 Paramount Place
OXENFORD

 2 Bedrooms

 1 Bathroom

 1 Car Garage

Block Size 344m²
TOTAL FLOOR AREA
135m² or 15 Squares

Mick Wells | 0408 537 567



Whilst every attempt has been made to ensure the accuracy of the floor plan contained here, measurements of doors, windows, rooms and any other items are approximate and no responsibility is taken for error, omission or mis-statement. This plan is for illustrative purposes only and should only be used as such by any prospective purchaser. The services systems and appliances shown have not been tested and no guarantee as to their operability or efficiency can be given.

Disclaimer: Please note this floor plan is for marketing purposes and is to be used as a guide only. All dimensions are estimates only and may not be exact measurements.

Mick Wells
0408537567
mickwells@atrealty.com.au
www.atrealty.com.au

