



SOLD

UNLOCK THE POTENTIAL

If you have been looking for your next renovation project or looking to get your foot in the property market, this is your opportunity. This home eagerly awaits your personal touch to restore the original charm of this high-set 2-3 bedroom timeless weatherboard classic.

While the home faced the challenges of the 2022 flood event, its resilience and character remains intact. Featuring solid hardwood timber floors, central kitchen, high ceilings and large bedrooms. This home offers a multitude of possibilities and the chance to return it to its former pre-flood glory.

Notably, this property boasts future development potential with its unique zoning, enables the operation of a commercial or light industrial business providing significant exposure and easy access to arterial roads.(STCA). Nestled in a prime location, this property is conveniently positioned just minutes away from the Lismore CBD and less than 1km away from Lismore South Public School.

Contact Chris Williams to arrange your inspection

2 BED | 1 BATH | 3 CAR

PRICE:
\$210,000

OPEN FOR INSPECTION:
N/A

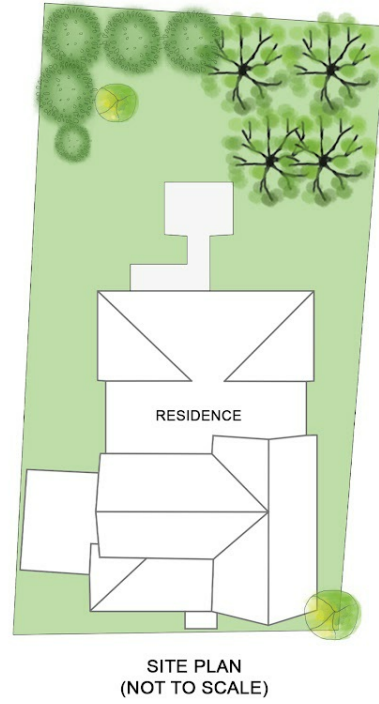
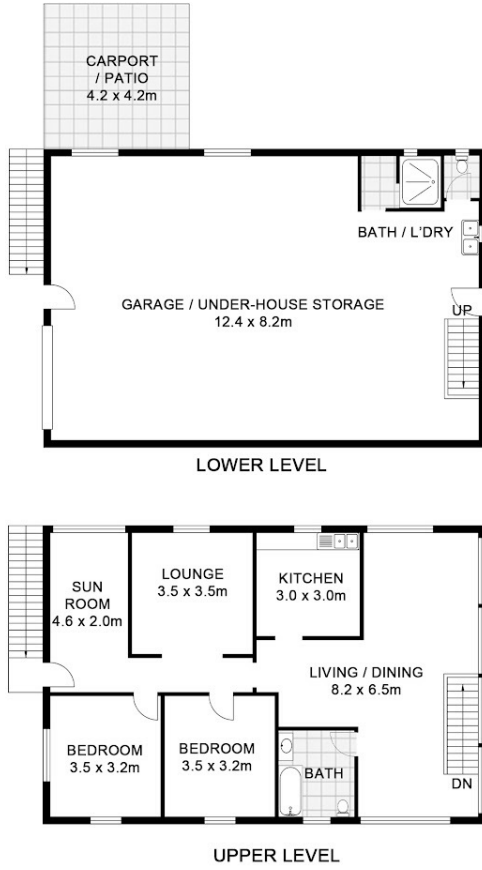


Chris Williams
0428333447
chrisw@atrealty.com.au
www.atrealty.com.au

25 Kyogle St, South Lismore



APPROXIMATE
AREAS
INTERNAL: 198m²
EXTERNAL: 18m²



Disclaimer: Please note this floor plan is for marketing purposes and is to be used as a guide only. All dimensions are estimates only and may not be exact measurements.