

SOLD

STYLISH EXECUTIVE LIVING !

+++++ SOLD AGAIN AT FIRST HOME OPEN !! WONDERING WHAT YOUR PROPERTY IS WORTH ? CONTACT NANCY BIRD ON 041 555 8594 AND SEE WHY SHE IS RATED BY ALL HER CLIENTS AS A 5 STAR AGENT +++++

Stylish Executive Living !

Nancy Bird is proud to present... This stylish two storey home of contemporary living and entertaining, with all the hard work done, and an inviting lifestyle to come home to. This flawless "AS NEW" ONLY four -year-old quality built Summit Group Home, three-bedroom, two-bathroom home is where modern design blends perfectly with sheer luxury and high-end amenities that promotes easy living, perfectly located in an in-demand park-side pocket.

From the eye-catching façade to the fantastic interior - every corner will impress. Tiled floors complement high ceilings, framing an exceptional open plan living domain highlighted by the sleek kitchen, enhanced by black stone benchtops and European appliances, including a Double Door Fridge/Freezer plumbed for water and ice, 900mm oven, five burner gas cooktop and a brand new dishwasher.

The inviting living and dining area with a brilliant northern aspect is complemented by a built in bar with beer taps and under bench fridges. This spacious living area features large windows, custom built shelving and TV wall mounting brackets. Sliding doors from the Open Living area revealing a magnificent alfresco zone, perfect for indoor-outdoor living and entertaining, complete with a chrome and glass fenced brand new outdoor luxury spa with stunning feature frame and lighting complemented by easy-care, fully reticulated landscaped gardens with stunning lush green lawn and garden beds

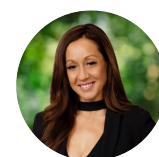
The gorgeous additional separate Theatre Room has quality carpet, wall brackets for TV wall mounting and both the Theatre Room and Open Plan Living feature hard line Ethernet Cable so any gaming consoles or computers can be plugged in for high speed internet access

This stunning property is finished impeccably, with stone bench tops throughout in vogue neutral décor throughout, downlighting, window treatments and quality plush carpets with underlay. Nothing for you to do, just move in and enjoy this beautiful modern home.

3 BED | 2 BATH | 2 CAR

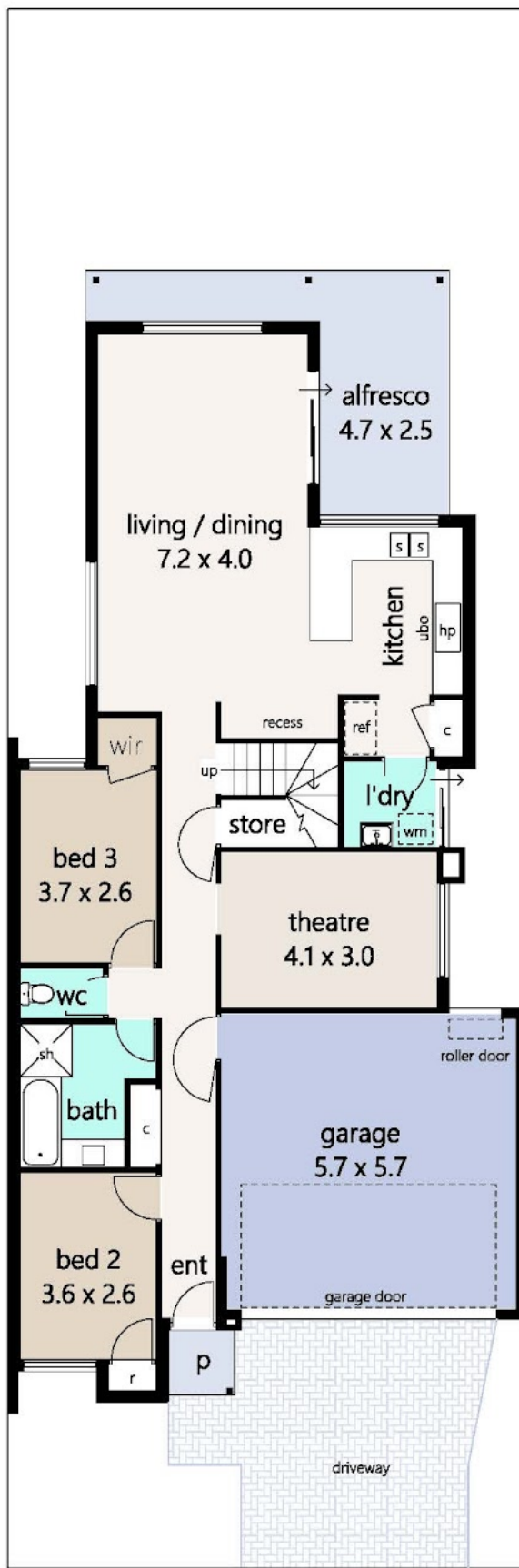
PRICE:
\$760,000

OPEN FOR INSPECTION:
N/A

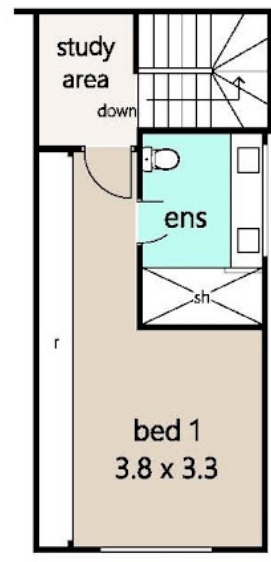


Nancy Bird
0415558594

nancybird@atrealty.com.au
www.atrealty.com.au



GROUND



UPPER

AREAS

| |
|------------------------------------|
| GROUND |
| HOUSE - 121.89m ² |
| GARAGE - 34.35m ² |
| PORCH - 1.96m ² |
| ALFRESCO - 16.24m ² |
| UPPER |
| HOUSE - 38.98m ² |
| TOTAL - 213.42m² |

Disclaimer: Please note this floor plan is for marketing purposes and is to be used as a guide only. All dimensions are estimates only and may not be exact measurements.

14 London Link, Aubin Grove



PLAN IS APPROXIMATE AND REPRESENTATIONAL ONLY

TATEFLOORPLANS.COM.AU



Nancy Bird
0415558594
 nancybird@atrealty.com.au
 www.atrealty.com.au