

1/5 BOTTLEBRUSH AVENUE, BLI BLI, QLD, 4560



**SOLD**

**\*\* UNDER OFFER \*\* LUXURY 3 BED TOWN HOUSE IN GATED COMMUNITY, VERY PEACEFUL AND LARGE BACKYARD!**

Welcome to Bli Bli, a tranquil, serene suburb in the heart of Queensland. This is where you will find the perfect family home, waiting to be filled with cherished memories.

This three-bedroom town house with ensuite is set on a generous 183 square meters of land. It features two bathrooms, double lock up garages, a dishwasher, conditioning and heating, gas cooking, so you can enjoy total comfort all year round. Stunning tropical garden and citrus trees.

You will find a remote garage, entertainment area, and the whole property is fully fenced, ensuring your safety and privacy. The area has been landscaped with thought and care, so you can enjoy a beautiful outdoor space and deck for barbecues and gatherings with friends, or to just relax and take in the scenery.

The property has been an owner occupier and has beautiful gardens and water falls giving a tranquil relaxed atmosphere. Being ready to move in.

The location of this property is ideal for families, older couples or young just starting out. Bli Bli is a safe and secure environment, where you can enjoy a slow-paced lifestyle. The area is known for its beautiful nature reserves and a variety of public parks and playgrounds. It's also close to local amenities, including cafes, shops, and schools.

This house has been designed with the modern family in mind. It's the perfect place to start a new chapter in your life – one surrounded by a tranquil atmosphere, spacious living, and a friendly neighbourhood.

This is a unique opportunity to own a town house in Bli Bli. Don't miss out! Contact Chris 0434 449 455 or Luka 0421 272 178 for more information today.

Body Corporate is \$4,000pa  
Rates are \$2,200pa

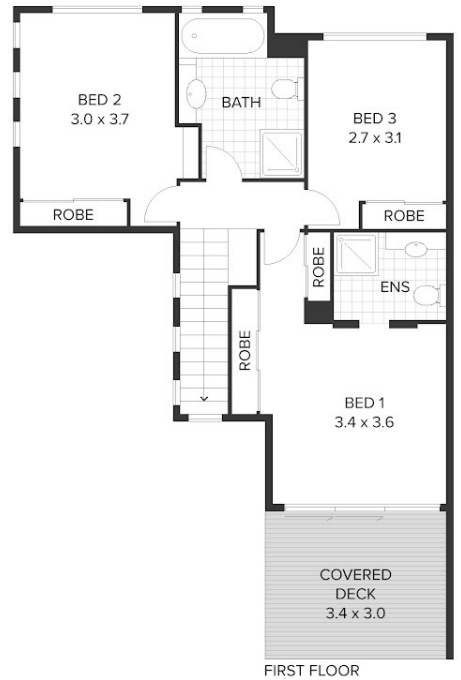
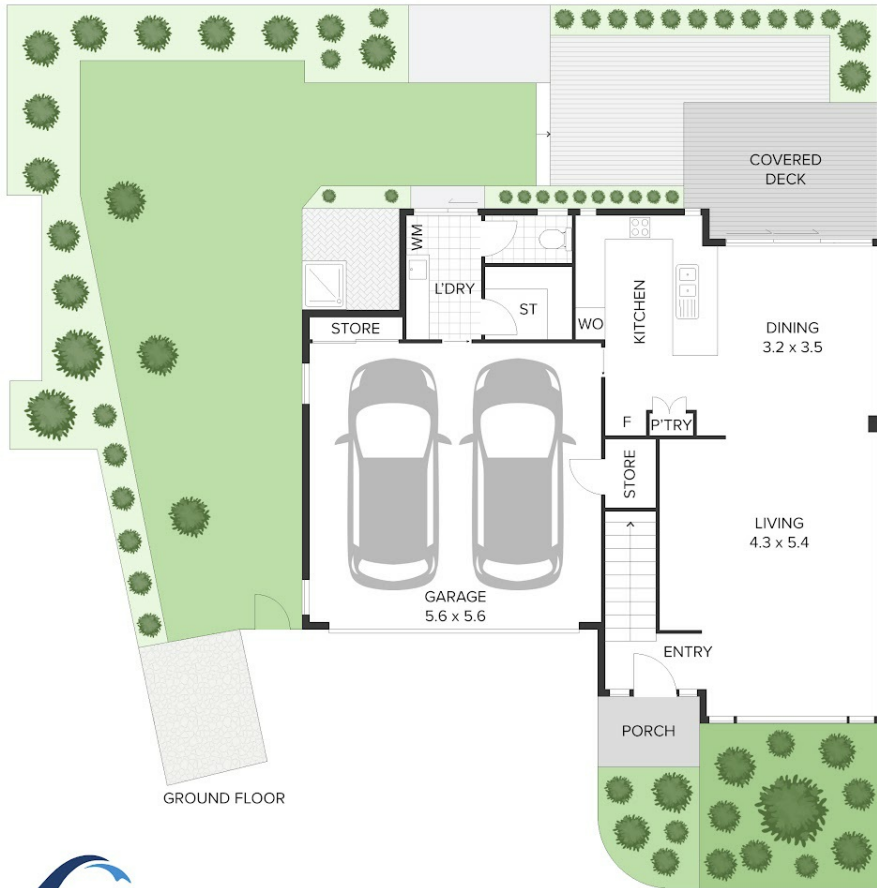
**3 BED | 2 BATH | 2 CAR**

**PRICE:**  
**\$795,000**

**OPEN FOR INSPECTION:**  
**N/A**



**Chris Pullen**  
**0434449455**  
chris.bluewaveproperty@atrealty.com.au  
[www.atrealty.com.au](http://www.atrealty.com.au)



ARTIST'S IMPRESSION ONLY: While every attempt has been made to ensure the accuracy of this floor plan's, areas and measurements of doors, windows, rooms and all other items are approximate and no responsibility is taken for any error, omission, or mis-statement. This plan is for illustrative purposes only and should only be used as such by any prospective purchaser.

INTERNAL:	124m <sup>2</sup>
EXTERNAL:	25m <sup>2</sup>
GARAGE:	34m <sup>2</sup>
TOTAL:	183m <sup>2</sup>

Disclaimer: Please note this floor plan is for marketing purposes and is to be used as a guide only. All dimensions are estimates only and may not be exact measurements.