



SOLD

**"STUNNING 4 BED FAMILY HOME ON 1065M2 -
READY FOR YOU TO MOVE IN!"**

Welcome to your own private piece of paradise! This beautiful house, situated on a spacious 1065sqm block is an absolute must-see.

This four-bedroom home is a blank canvas just waiting for you to transform it into your dream abode. The large, open plan living space is perfect for entertaining guests or just relaxing in the company of your family. The house offers a modern kitchen with plenty of bench space and storage, as well as a breakfast bar to make it easy for you to create delicious meals. The bedrooms are of generous size with built in robes with plenty of room for beds and other furnishings.

As you step outside, you will be met with a tranquil backyard that is perfect for summer bbqs with family and friends. This home also comes with a double lockup garage, allowing you to securely park your vehicles during the night.

This property is positioned in a quiet neighbourhood, surrounded by well-manicured lawns and friendly neighbours. The local area offers excellent schools, parks, and all of the amenities you need for day-to-day living.

This property is ready for you to move in right away. There is absolutely no need to worry about rent or a lease, as this property is yours to enjoy for as long as you want.

Take this opportunity to own your very own piece of paradise and call this house your home. Contact us today to book a viewing and start your journey to owning your dream house.

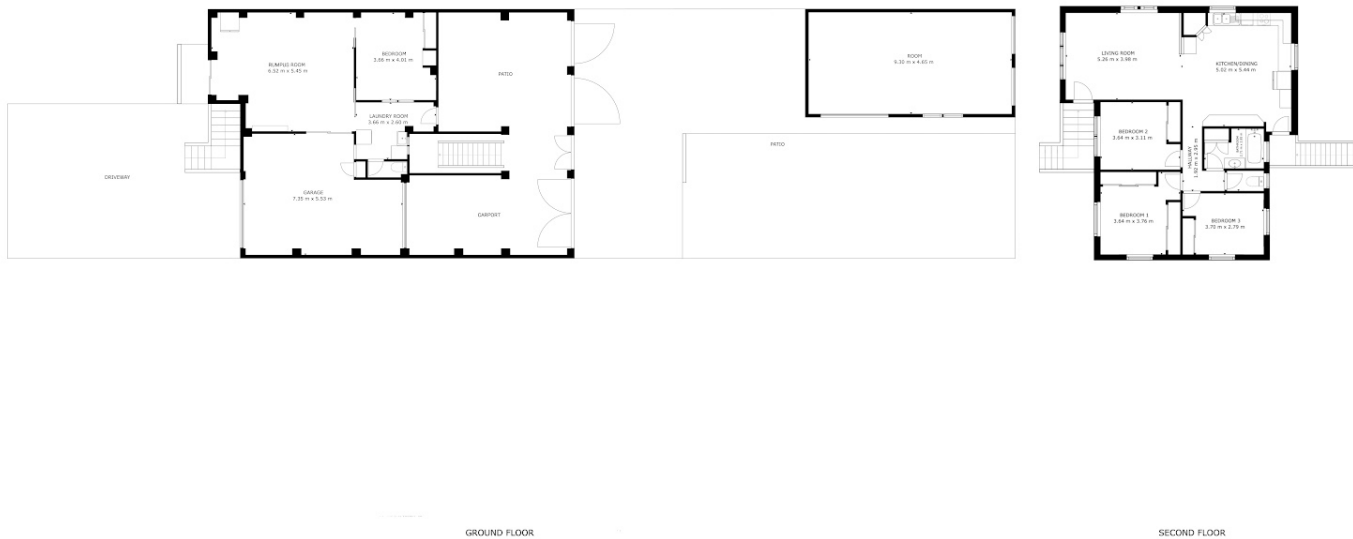
4 BED | 1 BATH | 2 CAR

PRICE:
\$490,000

OPEN FOR INSPECTION:
N/A



Layton Campbell
0415468963
laytoncampbell@atrealty.com.au
www.atrealty.com.au



GROSS INTERNAL AREA
 GROUND FLOOR : 101.65 m², SECOND FLOOR: 95.02 m²
 EXCLUDED AREAS; GARAGE: 37.36 m², DRIVEWAY: 52.96 m², PATIO: 221.99 m², PORCH: 31.85 m², HALLWAY: 40.89 m²
 TOTAL: 196.67 m²
 SIZES AND DIMENSIONS ARE APPROXIMATE, ACTUAL MAY VARY.

Disclaimer: Please note this floor plan is for marketing purposes and is to be used as a guide only. All dimensions are estimates only and may not be exact measurements.