



SOLD

600 SQM BLOCK-3BRM, HIGHSET, POTENTIAL DUAL LIVING, VIEWS, SPACIOUS DECK, BRILLIANT LOCATION-\$390K

@realty are delighted to be exclusive agents of this well presented and attractive property. Recently renovated bathroom in October 2022, the property was repainted in 2021, and all rooms fitted with air conditioning.

Fully enclosed downstairs with the 2nd toilet, and with some imagination this property can be turned into dual occupancy with a self-contained flat downstairs.

- An Ideal Launchpad for First-Time Homeownership or Investment Excellence

Embark on a journey towards your first home or bolster your investment portfolio with this enticing opportunity. Attain a rental return of \$480 per week. Nestled on a pristine 600 sq.m block with convenient off-street car accommodation, this residence is poised to redefine your living experience. The added allure? It backs onto council reserve land, ensuring your privacy with no rear neighbours, a rare and precious feature.

Location Perfection:

Benefit from the ultimate convenience as this home is strategically positioned within walking distance of the corner shop, bakery, and a tempting take-away spot. This prime location ensures that essentials and culinary delights are just a leisurely stroll away, enhancing your day-to-day living. Close to the new Mt Louisa recreational walking track, fitness opportunities abound at your doorstep.

Comfortable Living at its Core:

Step into a world of cool and comfortable living. The upper level unfolds with three bedrooms and inviting living/dining areas, providing the perfect canvas for your lifestyle. Picture yourself enjoying the gentle breeze on the handy deck off the dining room with mountain views— an ideal spot for morning coffees or juice, intimate gatherings, or simply unwinding after a day's work.

Entertainer's Delight:

3 BED | 1 BATH | 2 CAR

PRICE:
\$370,000

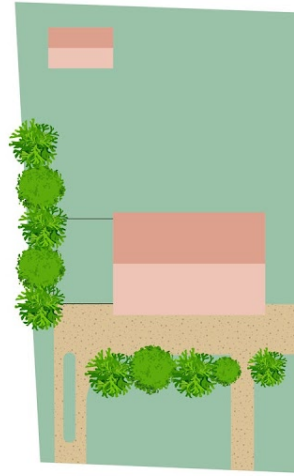
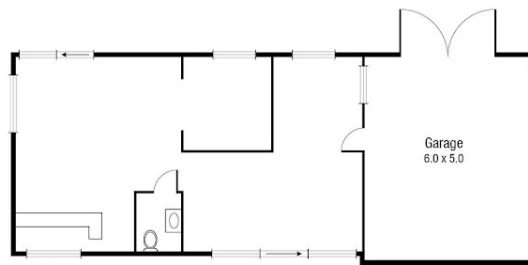
OPEN FOR INSPECTION:
N/A



Jean Laterre
0437696969

jean.ccr@atrealty.com.au

www.atrealty.com.au



TOTAL AREA : 203.4 sq.m

Scale in metres. Indicative only. Dimensions are approximate. All information contained herein is gathered from sources we believe to be reliable. However we cannot guarantee its accuracy and interested persons should rely on their own enquiries.

3 Corella Court, Mount Iouisa

Disclaimer: Please note this floor plan is for marketing purposes and is to be used as a guide only. All dimensions are estimates only and may not be exact measurements.