



SOLD

THIS ENCHANTING HIDEAWAY WILL MAKE YOUR HEART BEAT !!

The current owners have transformed this property into a picturesque paradise, perfect for all-season comfort and entertaining on any scale. The secluded three-bedroom house offers a perfect haven for ready-now buyers.

A charming beach-style dwelling, parcelled on a generous 531 square metre allotment, boasts seamless open-plan living filled with tropical ambience, natural light, and fresh air.

The spectacular outdoor alfresco dining and living space has flowing connectivity from within, leaving you spoiled for where to relax and dine.

Fusions of warm timber inside and out will mesmerise you, and crafted steps within guide you to a sunken kitchen, where cooking becomes a pleasure as you embrace the majestic leafy green outlook. French doors open onto the enchanting decks and garden surrounds, with aluminium windows, fresh breezes and ceiling fans throughout the home.

The king-size main bedroom offers comfort in size and an optional view. Enjoy coffee on the elevated front deck or ground level amongst lush green grass and landscaped ground-level gardens.

Two additional bedrooms and a conveniently located light-filled bathroom serve all rooms with ease and functionality.

A near-new single garage/carport and work shed, in addition to exceptional side access, accommodates a boat, caravan, or additional vehicles, all secured behind a private colour bond fence and double gate.

There is additional free-standing, quick-access storage for the home handyman, or you can revert to original glory, being an adorable cubby house and a space for the kids to play.

Shopping centres, schools, and professional services are all close by.

This exceptional home is only 1300 metres from Sylvan Beach Esplanade. Enjoy stunning bike paths, playgrounds, and quaint cafés along the stunning shoreline, with a boat ramp and bait shop catering to fishing and water enthusiasts.

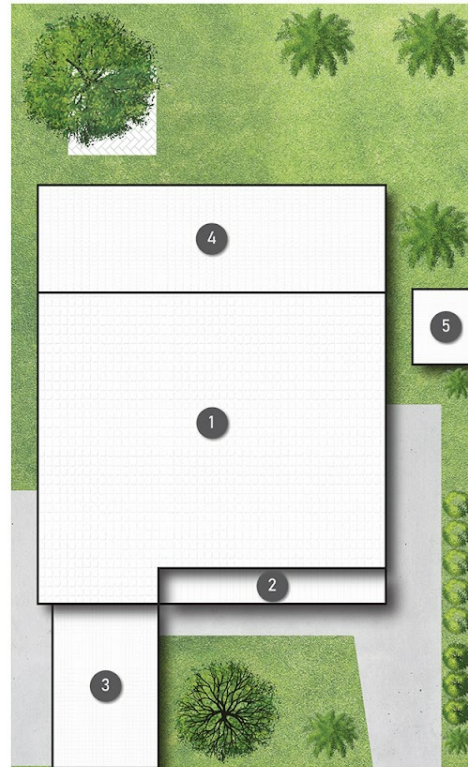
3 BED | 1 BATH | 1 CAR

PRICE:
\$738,000

OPEN FOR INSPECTION:
N/A



Tracie Robinson
0401091182
tracierobinson@atrealty.com.au
www.atrealty.com.au



- LEGEND
- 1 RESIDENCE
 - 2 DECK
 - 3 GARAGE
 - 4 ALFRESCO
 - 5 SHED

50 Arinya Avenue BELLARA

3 | 1 | 1 | 178m²

All dimensions are approximate; they are subject to errors and inaccuracies and no liability will be accepted. Plans are shown for marketing purposes only.

Disclaimer: Please note this floor plan is for marketing purposes and is to be used as a guide only. All dimensions are estimates only and may not be exact measurements.