

FOR SALE

BRAND NEW 4-BEDROOM CONTEMPORARY FAMILY HOME - PERFECT FOR YOU!


Welcome to a wonderful family home, located in a friendly and new neighbourhood of Playford Alive. This gorgeous home offers four decent bedrooms, two bathrooms, two garages, study, open space family living and roofed outdoor living.

Eligible buyers take advantage of \$15,000 First Homeowner's Grant* and full stamp duty waiver*. Every aspect from thoughtful design, landscaping, colour palette and surroundings merge to make a peaceful and contemporary lifestyle.

As soon as you enter, you will be greeted by open living/study area, complete with floating floorboards and natural light. The kitchen is of generous size, with plenty of cupboard space, a gas stove, double sink, and a dishwasher for added convenience.

The beautiful home features:

- Attractive and individualistic fully rendered façade.
- 4 decent bedrooms.
- Walk in robe and ensuite to master bedroom.
- Mirrored sliding built in robes to bedrooms 2, 3 and 4.
- Premium floating floorboards throughout living spaces and quality carpet to bedrooms.
- 2.7m high ceilings with LED downlights throughout.
- Ducted and zoned reverse-cycle air conditioning throughout.
- Designer kitchen with stone bench top, stainless steel appliances, gas cooktop, double sink, contemporary tapware, dishwasher, soft close drawers, and water point for your fridge.
- Ensuite and bathroom with premium basins & tapware, designer shower heads, semi-frameless shower screens, superior floor to ceiling tiles, toilets, and combo lights.
- Decent laundry with storage.
- Double garage with automated contemporary panel lift door and internal access.

4  | 2  | 2 

PRICE:
\$549,000 - \$599,000

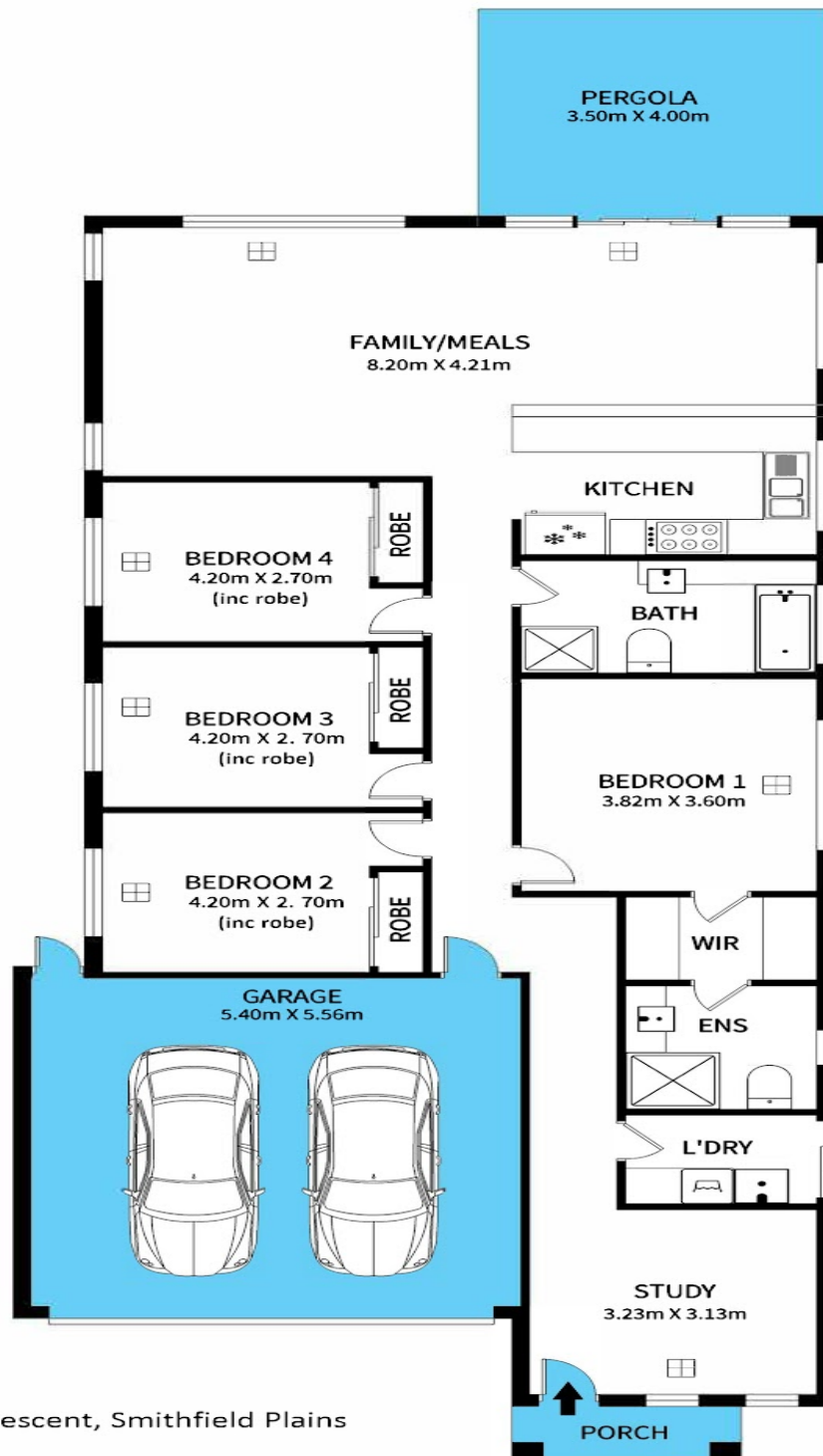


Gary Brar | 0416 748 147

info@fabrealtors.com.au

fabrealtors.com.au

RLA 312162



15 Murray Crescent, Smithfield Plains

Disclaimer: This drawing is for illustration purposes only. All measurements are approximate. Details intended to be relied upon should be independently verified.