

2B SIXTH AVENUE, GLENELG EAST, SA, 5045



FOR LEASE

LUXURIOUS 3 BEDROOM TOWNHOUSE IN GLENELG EAST WITH DOUBLE STOREY, DECK & ENTERTAINMENT AREA.

Welcome to your next home in Glenelg East. Situated in a peaceful neighbourhood, this charming townhouse is ready for you to move in!

Enjoy the convenience of a two-car remote garage and a fully fenced yard, giving you the perfect combination of functionality and style. You will love the outdoor entertainment area with the deck, perfect for hosting friends and family.

Inside, the house is spacious and modern. The double storey features three bedrooms and two bathrooms, with a study room that is perfect for those who need to work from home. The built-in wardrobes provide plenty of storage space for all your belongings. The kitchen is equipped with a dishwasher to help you with your daily chores.

During the summer, you can cool off with the reverse cycle aircon, and during the winter, you can stay warm and cozy.

Excellent locale with public transport at your doorstep and convenient to all amenities.

If you are looking for a peaceful and stylish place to call home, this is the perfect fit. Make an appointment now to come and have a look!

TO INSPECT OR APPLY:

It's important to register your interest in any upcoming and advertised open homes or inspections. Failing to register may result in not being informed of any unforeseen or unplanned changes to inspection times. To register (or apply) for this property please click on the get in touch button and send your details to our agency. You'll receive an email back with instructions on how to register and apply via our website and booking service.

We do NOT accept 1Form, Ignite, 2Apply or any other online type of tenancy application form.

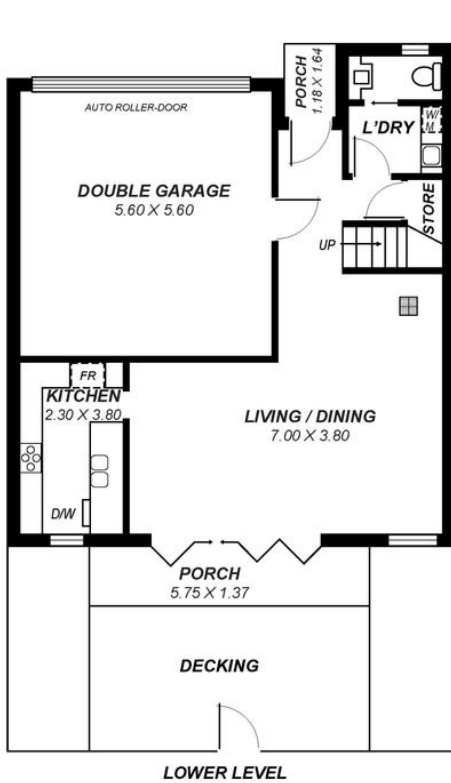
3 BED | 2 BATH | 2 CAR

PRICE:
\$700 per week

OPEN FOR INSPECTION:
N/A

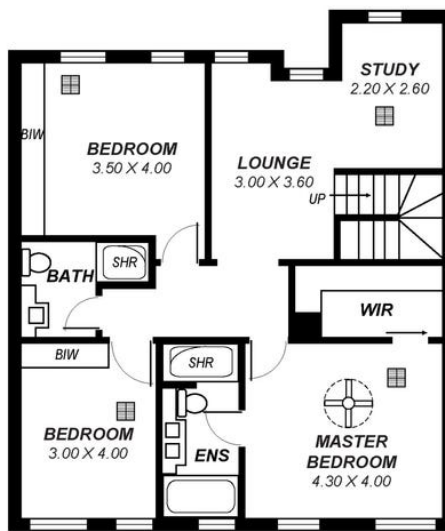


Andrew Giles
0414696936
gilesproperty@atrealty.com.au
www.atrealty.com.au
RLA: 269823



LOWER LEVEL

*This drawing is for illustration purposes only .
All measurements are approximate and details intended
to be relied upon should be independently verified.*



Area	m ²
LowerLiving:	53.49
UpperLiving:	85.81
Garage:	31.36
Porch:	9.81
Total:	180.47

Disclaimer: Please note this floor plan is for marketing purposes and is to be used as a guide only. All dimensions are estimates only and may not be exact measurements.