



SOLD

EXECUTIVE 274M2 FAMILY HOME

Welcome to the definition of quality family living boasting a spacious innovative family focused floor plan with multiple living zones including a media room, open plan living & dining and Study. This incredible family entertainer has been designed to meet the needs of a large or growing family.

Enjoy effortless cooking in the sleek modern open plan kitchen with quality 900mm appliances, walk in pantry and stone benches providing ample food preparation space.

The master suite evokes warmth, style and charm with an innovative use of space featuring a walk-in robe, beautifully appointed luxe en-suite with a spacious double shower and free standing bath.

Don't miss the opportunity to discover a home that embodies elegance, functionality, and the promise of cherished memories. Welcome to a life of unparalleled comfort and style.

Join the growing Riverbank community highlighting pristine parklands, dog parks, multiple playgrounds and walkways for the ultimate outdoor lifestyle making you the envy of all your friends and family.

Potential rental income: \$600 - \$650 per week

Builder: Coral Homes
House size: 274m²
Land size: 524m²

HOME FEATURES:

GOURMET KITCHEN

- Stone benches
- Dishwasher
- Free standing Gas oven/stove
- Fridge tap
- Walk in pantry

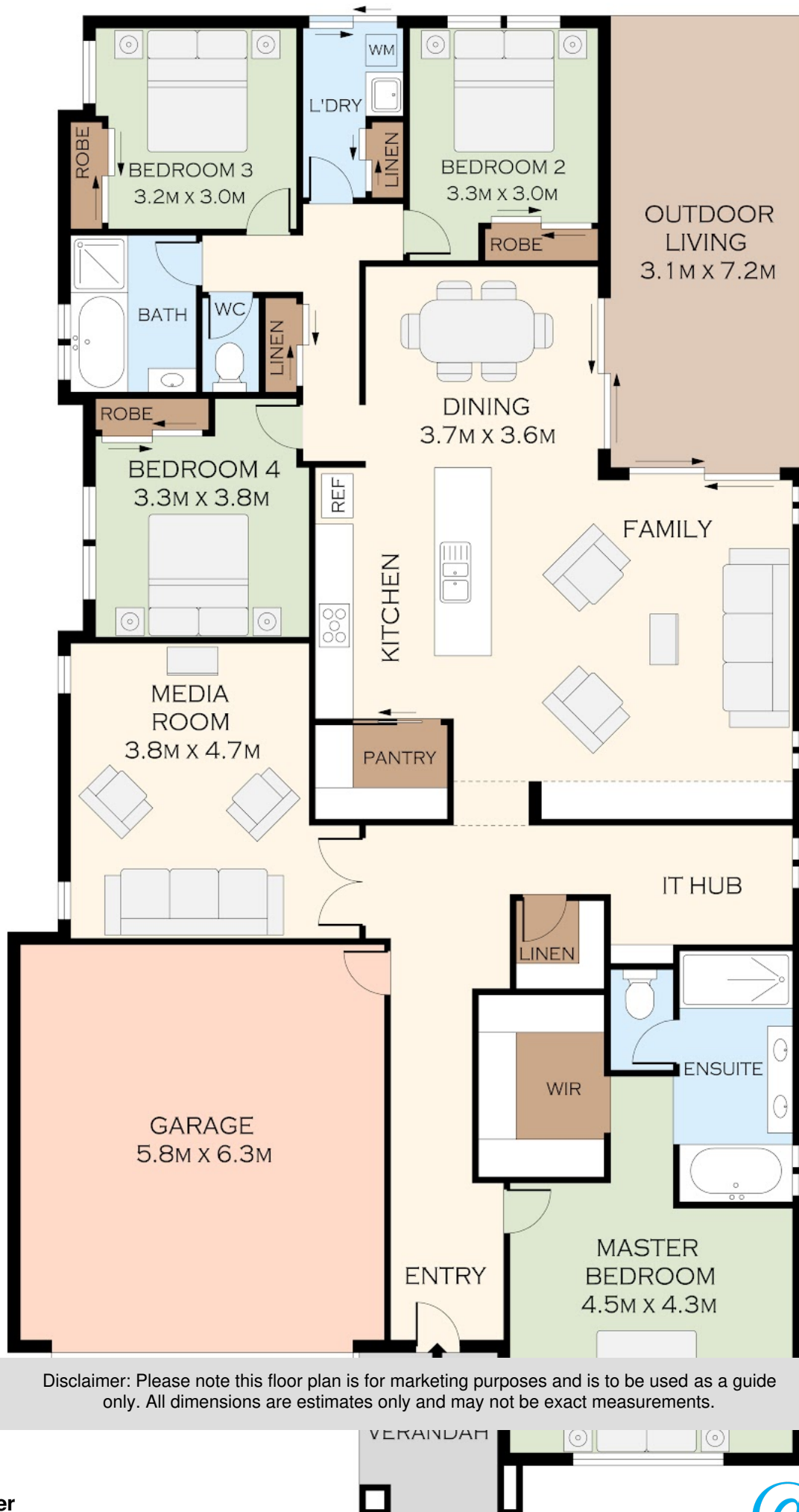
4 BED | 2 BATH | 2 CAR

PRICE:
\$790,000

OPEN FOR INSPECTION:
N/A



Mitchell Younger
0488458887
mitchell.younger@atrealty.com.au
www.atrealty.com.au



Disclaimer: Please note this floor plan is for marketing purposes and is to be used as a guide only. All dimensions are estimates only and may not be exact measurements.