



**SOLD**

## LIVE THE DREAM - CENTRAL & PRIVATE CUSTOM BUILT HOME WITH 6 STAR ENERGY RATING

Low maintenance living at its best! Perfect option for first home buyers, retirees or savvy investor.....

Near new home of individual design located in Cambridge only 2 minutes walk to the local primary school and local shop.

Surrounded by newer homes, this impeccably built home was one of the last to be built in the street and offers 3 bedrooms, internally accessed garage, sunny north facing private backyard with large timber sundeck and well landscaped gardens. The home was meticulously built by 'South East Builders' with an emphasis on detail and customised design. Tas-Oak architraves and skirtings feature throughout, double glazed windows throughout, stunning kitchen with stone benchtops and outdoor servery, huge pantry, stunning bathroom with two way access to master bedroom, large hallway linen cupboard and quality carpet throughout. Cost effective LED lights feature throughout the home, garage and external walls, and heating costs will be minimal with insulated ceilings, walls and double glazed windows working in unison with the inverter heatpump to provide a comfortable environment year around at minimal cost.

-Level Access

-Near New Home

-Individual Design

-Double glazed windows throughout

-LED Lighting throughout

-Low Maintenance living -6 Star energy rating

-Quality custom built homes are hard to come by in this area, please contact Ben Palmer using the links on this page for any further information.

This property is a rare find in a highly sought-after area. Don't miss your chance to call this stunning house your new home. Contact us today to arrange an inspection.

**3 BED | 1 BATH | 2 CAR**

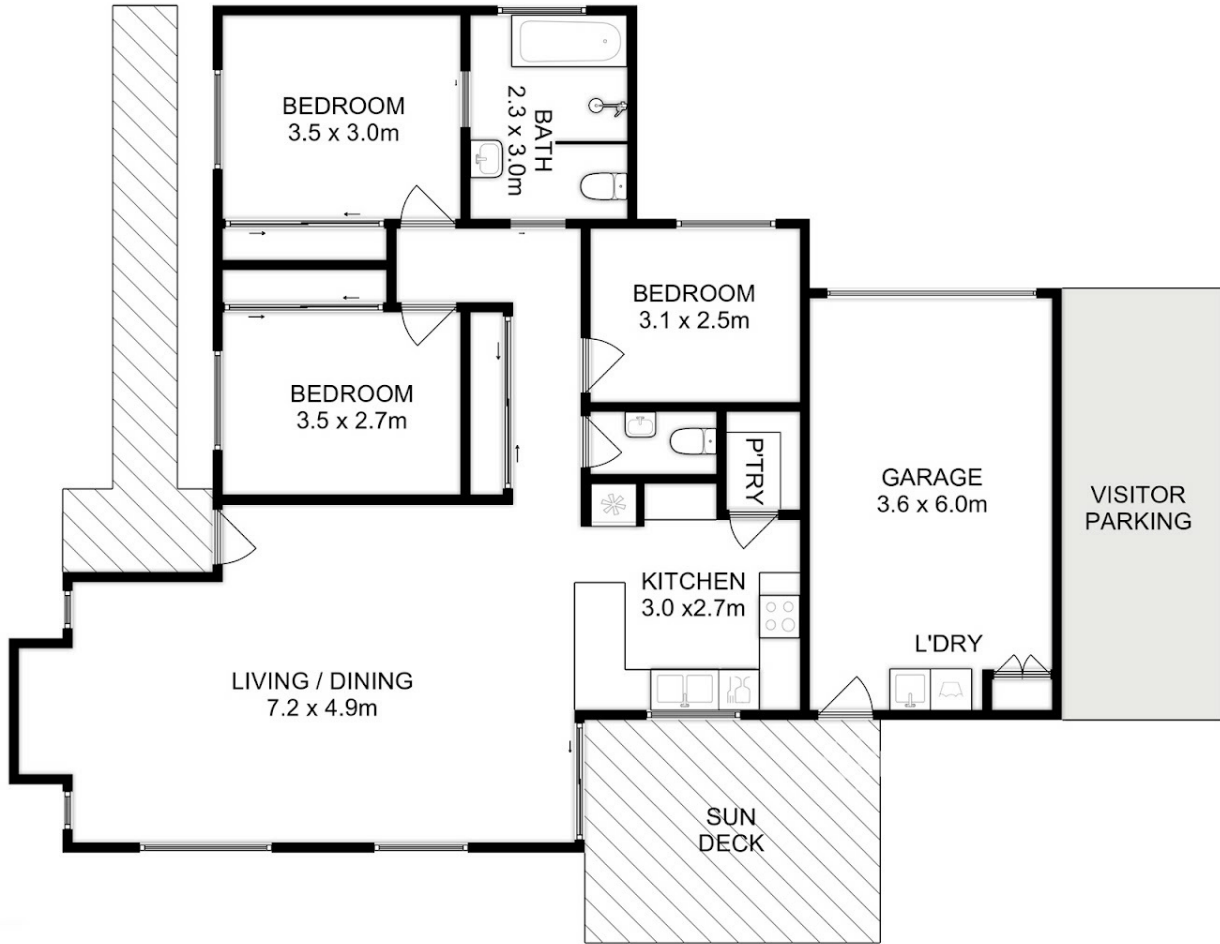
**PRICE:**  
\$660,000

**OPEN FOR INSPECTION:**  
N/A



**Ben Palmer**  
**0417556731**

benpalmer@atrealty.com.au  
[hobarthomes.com.au](http://hobarthomes.com.au)



Total Approx. Floor Area (inc. Garage) : 130 sqm

All measurements are internal and approximate.  
This plan is a sketch for illustration, not valuation.  
Produced by Open2view.com



Disclaimer: Please note this floor plan is for marketing purposes and is to be used as a guide only. All dimensions are estimates only and may not be exact measurements.