



SOLD

IMMACULATE & SPACIOUS TREASURE WITH HUGE YARD SPACE BACKING DIRECTLY ONTO TRANQUIL & PRIVATE PARKLANDS!

Welcome home to 84/36 Heathwood
The keys to your magical new family lifestyle awaits!

Have you been looking for your forever home but every property you step into just doesn't give you that WOW factor and that 'This is the one' feeling?? Have you been looking for a property to start your exciting next chapter but everything you look at is just so run down, tired and needs so much work?? Have you come across the right property in your budget but first you have to wait the tenants lease to finish in 6 months or so and you don't want to wait that long?? Have you been looking for a new home with a tranquil & private parkland backdrop but everything you look at backs onto 3 properties and would have you barbecuing with the neighbours every Sunday even if you didn't want to?? Have you been looking for a new home with some actual old school yard space for the kids & pets but everything in your price range has a backyard no bigger than a mini golf putting green??

If so, than your months & months of searching are finally over and boy do we have the property for you! The Patrick D'Arrigo Team is proud to introduce you to the magical & dazzling 84/36 Heathwood Street, Taigum! The keys to your exciting next chapter await!

Features include;

POSITION POSITION POSITION!!!!... Only 200m to Taigum Square shopping complete with a Woolworths & Big W, close to train station on the direct CBD train line, only a stones throw to the newly opened Holy Spirit Secondary College, just 5mins to Westfield Chermside and only 20mins to the Brisbane CBD!!

* Amazing opportunity for some lucky buyers - Acreage living without the maintenance only 20mins drive from the city!! All ready for you to shoot home, loosen the suit and tie and unwind with a beer or a glass of wine overlooking your spectacular & tranquil parkland backdrop!

* Spacious & surprising family home

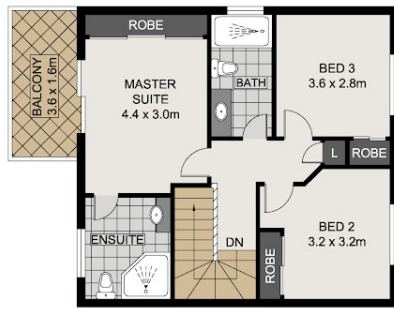
3 BED | 2 BATH | 1 CAR

PRICE:
\$660,000

OPEN FOR INSPECTION:
N/A



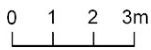
Patrick D'Arrigo
0447381869
pdarrigo@atrealty.com.au
www.atrealty.com.au



UPPER LEVEL



LOWER LEVEL



Scale in metres, indicative only. Dimensions are approximate. All information contained herein is gathered from sources we believe to be reliable. However, we cannot guarantee its accuracy and interested persons should rely on their own enquiries.



INT	: 97.74m ²
EXT	: 22.59m ²
GARAGE	: 21.12m ²
TOTAL	: 141.45m ²

84/36 Heathwood Street, Taigum

Disclaimer: Please note this floor plan is for marketing purposes and is to be used as a guide only. All dimensions are estimates only and may not be exact measurements.