

# 3 SILVEREYE CLOSE, BOAMBEE EAST, NSW, 2452



## SOLD

### 3 BEDROOM LEVEL LIVING IN BOAMBEE EAST.

Are you seeking a level, low maintenance home in a very convenient location situated only 100m to the IGA shopping centre in Boambee East.

Impeccably presented from front to back, this property will appeal to a broad audience.

Large light-filled living areas with ceiling fans and split system

Air-conditioning, this 3 bedroom home is very spacious in size and features built-in robes in all the bedrooms, the bathroom is well appointed and has a shower and bath and a separate toilet. The large light filled open - plan lounge/dining offer plenty of space for watching telly or just relaxing.

The kitchen is north facing, and has a large pantry, double sink plenty of bench space for all your culinary needs.

The home encompasses, practical, indoor/ outdoor living spaces with covered rear entertaining area and fully fenced backyard. There's a garden shed and room to have a veggie patch.

This property will easily accommodate children and pets, and would make the perfect low maintenance home for retirees or investors, move in straight away and enjoy this fantastic all round package.

Inspect today don't miss your chance to downsize or to purchase an ideal investment.

Call Cheryl Donaldson on 0466 037 468

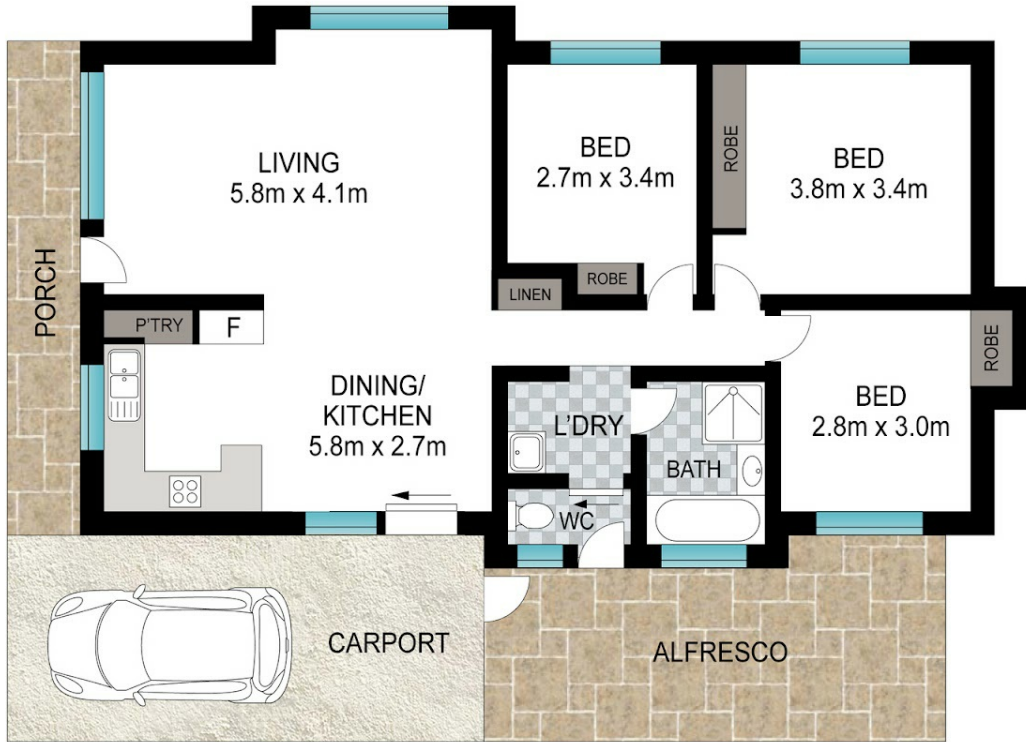
3 BED | 1 BATH | 1 CAR

PRICE:  
\$660,000

OPEN FOR INSPECTION:  
N/A



**Cheryl Donaldson**  
**0466037468**  
cheryl@atrealty.com.au  
[www.atrealty.com.au](http://www.atrealty.com.au)



INT: 88 m<sup>2</sup>  
EXT: 22 m<sup>2</sup>

Scale in metres. Indicative only. Dimensions are approximate. All information contained herein is gathered from sources we believe to be reliable. However, we cannot guarantee its accuracy and interested persons should rely on their own enquiries.

3 Silvereve Close, Boambee East



Disclaimer: Please note this floor plan is for marketing purposes and is to be used as a guide only. All dimensions are estimates only and may not be exact measurements.

**Cheryl Donaldson**  
0466037468  
cheryl@atrealty.com.au  
[www.atrealty.com.au](http://www.atrealty.com.au)

