

SOLD

LUXURY LIVING IN BEDFORD

Discover this contemporary family home, strategically perched atop the hill on Edward Street. Boasting a myriad of sophisticated features, this home is a testament to modern living.

The ground floor invites you into a charming entrance foyer that leads seamlessly to an expansive open living space. Revel in your personal wine storage area, complemented by a fabulous kitchen featuring stone benchtops, a dishwasher, and top-of-the-line stainless steel appliances. Adorned with stunning timber floors, lofty ceilings, and elegant plantation shutters, the ground floor also houses a grand master suite with a walk-in robe and a luxurious ensuite bathroom.

A double lock-up garage with convenient shoppers' entrance through a well-appointed laundry adds to the functional design. Step through sliding doors from the dining area onto a delightful alfresco dining space, surrounded by meticulously landscaped gardens.

Ascend to the first level, where a vast second lounge awaits, along with three generously proportioned bedrooms, each boasting ample storage. A spacious bathroom with double vanity and a bath completes the upper level.

This residence is equipped with fully ducted reverse cycle air conditioning and a security alarm for your peace of mind. Nestled on a fully landscaped and reticulated 326 sqm corner block, the property is ideally situated within walking distance to Chisholm Catholic College. The Galleria Shopping Center, Inglewood cafe strip, and the Perth CBD are all just minutes away.

Seize this opportunity to experience the epitome of modern family living in a prime location. Register your interest now!

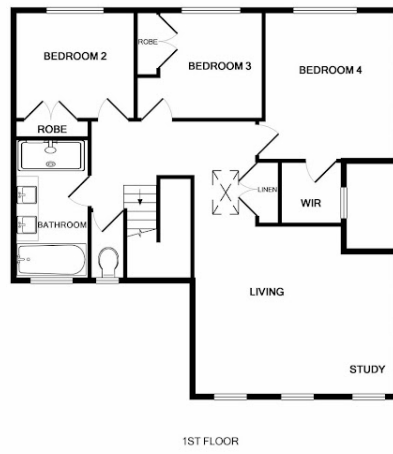
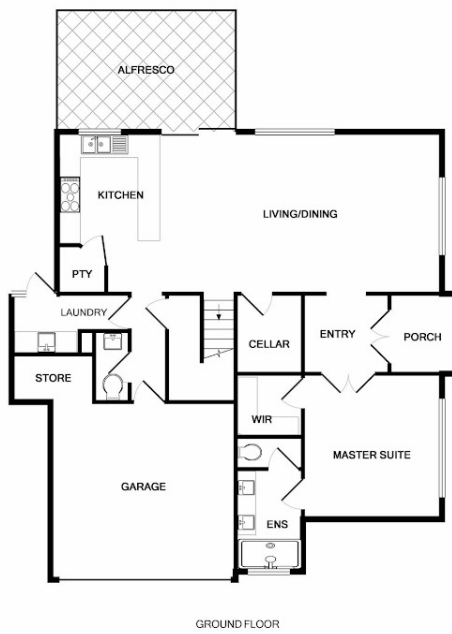
4 BED | 2 BATH | 2 CAR

PRICE:
\$1,100,000

OPEN FOR INSPECTION:
N/A



Rob Harwood
0411649625
robharwood@atrealty.com.au
www.robharwoodatrealty.com.au



Whilst every attempt has been made to ensure the accuracy of the floor plan contained here, measurements of doors, windows, rooms and any other items are approximate and no responsibility is taken for any error, omission, or mis-statement. This plan is for illustrative purposes only and should be used as such by any prospective purchaser. The services, systems and appliances shown have not been tested and no guarantee as to their operability or efficiency can be given.
 Made with Metropix G2019

Disclaimer: Please note this floor plan is for marketing purposes and is to be used as a guide only. All dimensions are estimates only and may not be exact measurements.