



FOR LEASE

RETAIL SHOP/WHAREHOUSE & PARKING

- * IDEAL MANY USES - RETAIL - WAREHOUSE - WHOLESAL -
- * AMPLE PARKING
- * 3 PHASE POWER AVAILABLE
- * COUNCIL RATES - APROX. \$2240 PA
- * SAWATER APROX. \$185 PER QUARTER
- * ESL \$318 PA
- * RENT \$1,500 PER CALENDER MONTH RLA 269823

0 BED | 0 BATH | 1 CAR

PRICE:

\$0

OPEN FOR INSPECTION:

N/A



Allen Smith

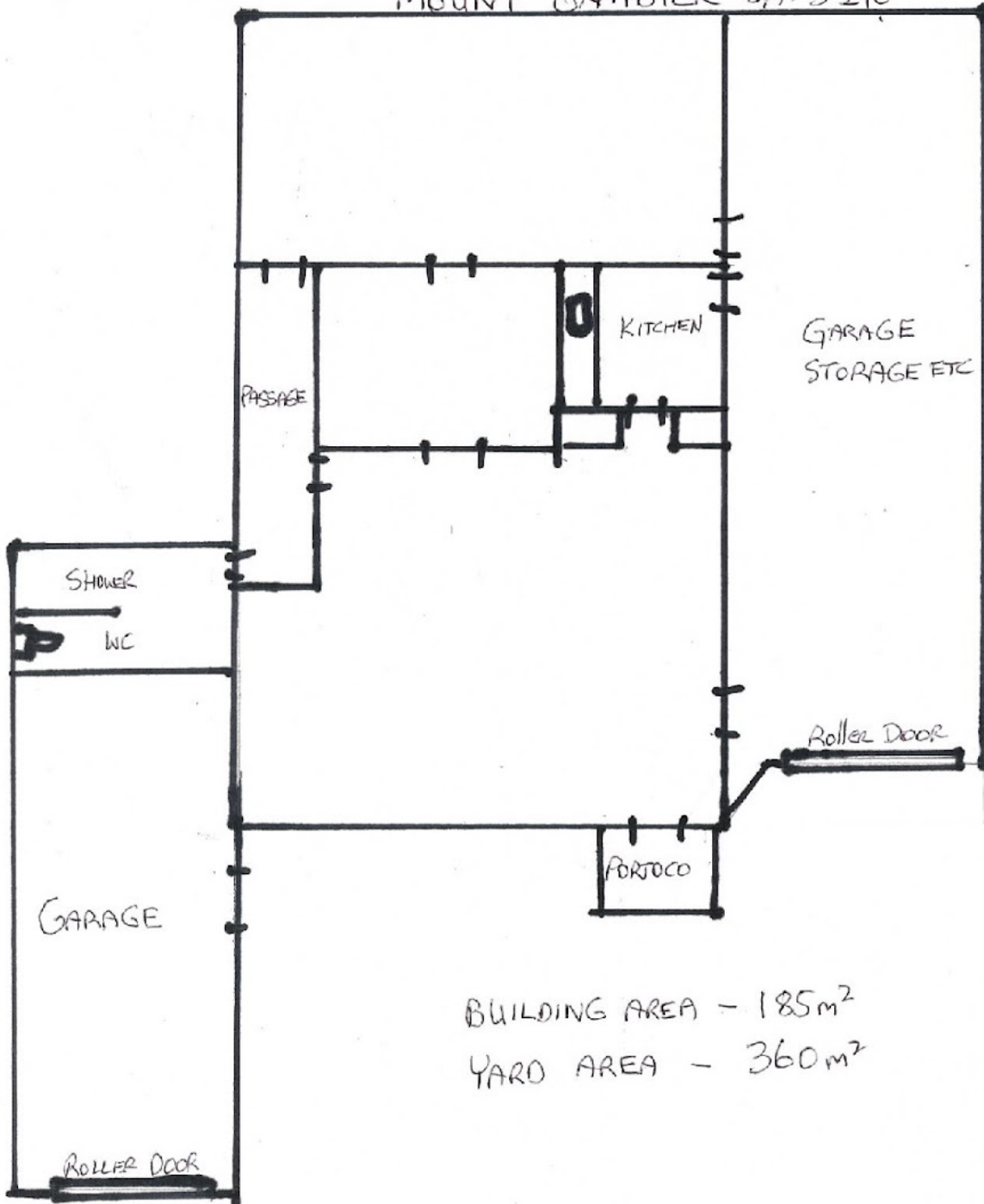
0419869854

allen.smith@atrealty.com.au

www.atrealty.com.au

RLA: 269823

11 CALDWELL STREET
MOUNT GAMBIER SA. 5290



Disclaimer: Please note this floor plan is for marketing purposes and is to be used as a guide only. All dimensions are estimates only and may not be exact measurements.