

72-74 RACECOURSE PLACE, TAMBORINE, QLD, 4270



SOLD

DREAMY TAMBORINE 2.5 ACRES, BEAUTIFUL HOME, THAT TICKS ALL THE BOXES, POOL, SHED, SO BE QUICK. OPEN 6 JAN 2024 HAS BEEN CANCELLED

Country living at its finest. This lovely home sits on 2 acres at the end of a Cul-De-Sac with Pool Shed, alfresco, Solar Power and backs onto the nature reserve...Oh The Serenity.

Plenty of room to move here and please the whole family, The fantastic Kitchen, the shed, Caravan Parking and of course the stunning Pool and Alfresco

Don't miss out on this amazing opportunity to own your own dream acreage.

- Stylish double sized brick home with Termi-glass protection
- 3 Phase power with a generator input Socket
- Fully snake proof Fenced with Electric Gates
- Located at the end of a quite Cul-De-Sac
- 4 Generous sized Bedrooms
- Formal lounge/ Living room Plus
- Additional Meals area
- Gourmet Kitchen with 900 Wide Gas Cooktop and 900 Wide Electric Oven
- Gas Hot water
- 13.4 Kilowatts of Solar Power
- approx. 45,000 Litres of Water storage with Town trickle feed when needed
- 2 Bathrooms
- Stunning in ground Pool and deck with Robotek Automatic Pool Cleaner
- Massive Alfresco Area complete with built-in Pizza Oven and Mounted Circulating Fan
- Shed with a 15Amp power point on the outside for Caravan Supply
- Approx. 9x6 3 Bay Shed
- 2nd 5,000Litre Water tank Behind the shed.

What more could you want? This is it, but be Quick Call Trevor Parker on 0421361608

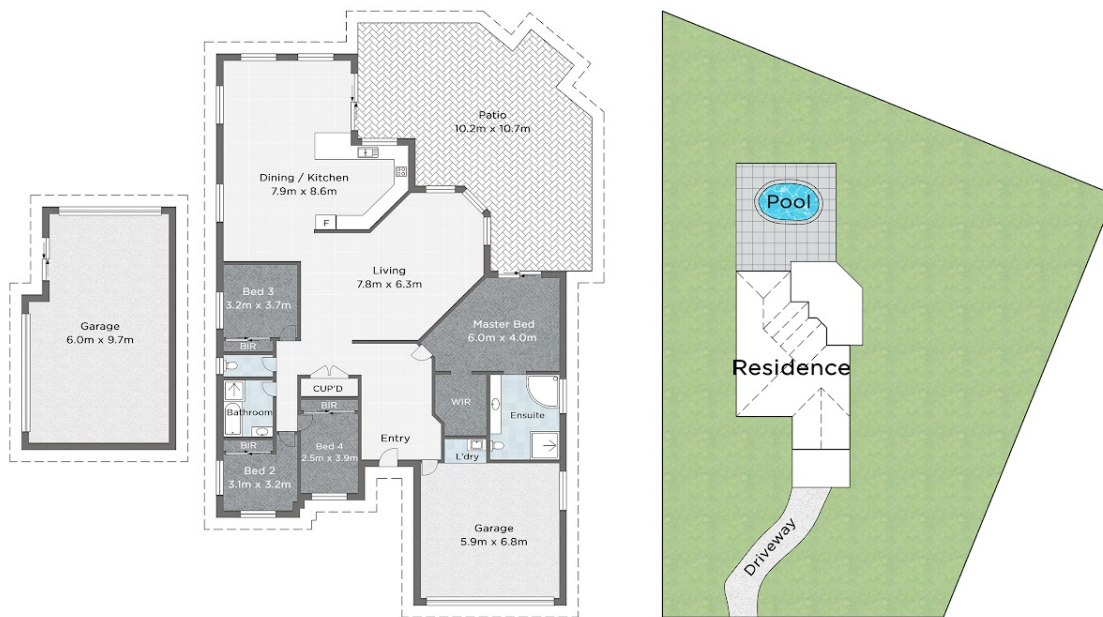
4 BED | 2 BATH | 6 CAR

PRICE:
\$1,235,000

OPEN FOR INSPECTION:
N/A



Trevor Parker
0421361608
trevorparker@atrealty.com.au
www.atrealty.com.au



72-74 RACECOURSE PL, TAMBORINE

🛏 Bed 4 🚿 Bath 2 🚗 Car 6

INTERNAL 230m² | EXTERNAL 132m² | TOTAL 362m²

@realty

Trevor Parker 0421 361 608

Measurements are approximate only and no responsibility is taken for any error, omission, or mis-statement. This is for illustrative purposes only and should be used as such by any prospective purchaser. www.picsandmortar.com.au

Disclaimer: Please note this floor plan is for marketing purposes and is to be used as a guide only. All dimensions are estimates only and may not be exact measurements.

Trevor Parker
 0421361608
 trevorparker@atrealty.com.au
www.atrealty.com.au

@realty