

SOLD

RENOVATED 3-BEDROOM COTTAGE, SOLAR, AND SHEDS ON A LARGE 1,419 M2 BLOCK.

Welcome to Hampton, Queensland – home of lush fertile soil and a vibrant local culture.

That's why this stunning three-bedroom, one-bathroom cottage is the perfect place to make your home. Located in this picturesque suburb, it offers the perfect rural setting.

From the outside, the house boasts a 1419-square-meter space with lush green lawns, and a variety of outdoor features to make it the perfect place for relaxation and entertainment. There's a remote garage, carport, and sheds to provide extra storage. The block is fenced on three sides of the boundary.

Inside, the house offers a plethora of beautifully renovated colonial features boasting the old-world charm. From the polished floorboards to the built-in study, and the pay-TV access, you'll be able to enjoy your time at home in style. You can also stay comfortable all year round with the house's split system airconditioning and heating, as well as the solar panels and water tank, which make it an eco-friendly home.

Ceiling fans throughout the home.

The master bedroom has a large built-in robe and polished timber flooring.

The bathroom and laundry are tastefully renovated with a combination of modern and colonial features.

The interior and exterior of the home have recently been freshly painted.

Shrubs and shady trees surround the boundary creating a very private backyard for the whole family to enjoy.

This property is available now for you and your family to make your home and start living your dream life. With its unbeatable location and modern and colonial features, you'll be able to enjoy the best of Hampton without the hefty price tag of renting.

So don't hesitate, and come take a look at this beautiful property – the perfect place to begin your new life in the picturesque suburb of Hampton. The school bus stop is just across the Rd at the Hampton store.

3 BED | 1 BATH | 2 CAR

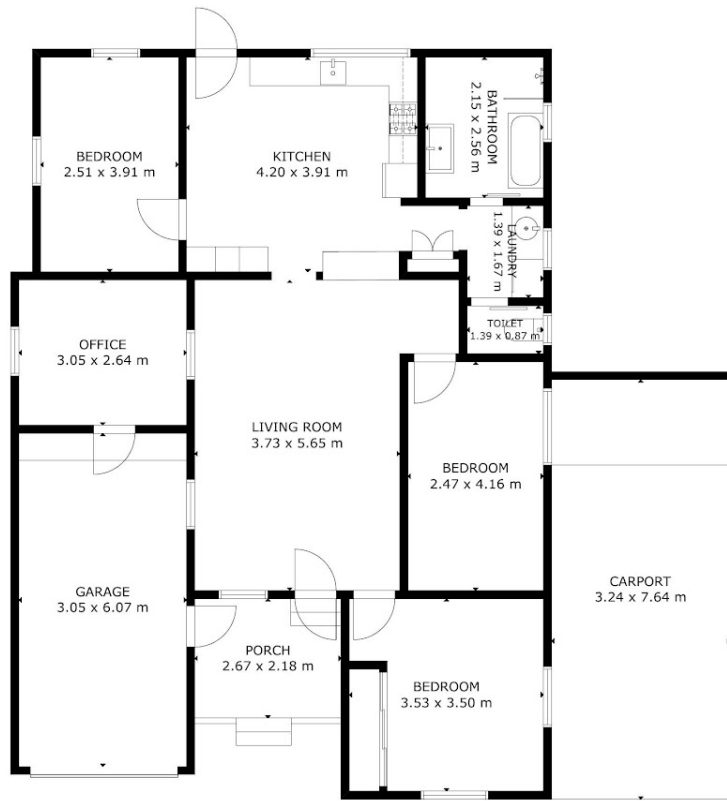
PRICE:
\$500,000

OPEN FOR INSPECTION:
N/A



Yvonne Bradley
0408181146

yvonne@atrealty.com.au
www.atrealty.com.au



GROSS INTERNAL AREA
 TOTAL: 94 m²
 FLOOR 1: 94 m²
 EXCLUDED AREAS: GARAGE: 18 m², PORCH: 6 m², CARPORT: 25 m²
 SIZE AND DIMENSIONS ARE APPROXIMATE, ACTUAL MAY VARY

FLOOR 1

Disclaimer: Please note this floor plan is for marketing purposes and is to be used as a guide only. All dimensions are estimates only and may not be exact measurements.