



FOR SALE

KOALA VALLEY ESTATE - VALLA, NSW.

Welcome to Koala Valley Estate – a rare opportunity to embrace rural coastal residential living while championing environmental stewardship. Nestled within the breathtaking Nambucca Valley, on the edge of the proposed Great Koala National Park, this 12.75-hectare estate redefines harmonious living by blending modern residential living with a deep commitment to preserving the natural world.

This exclusive land release features five expansive rural residential lots, thoughtfully designed to provide space, serenity, and connection. At the heart of this development lies a remarkable 7.35-hectare Koala Feed Tree Conservation Lot that surrounds the estate, creating a sanctuary for local wildlife and reinforcing our dedication to protecting the region's cherished koala population. As a lot owner, you'll join a community of like-minded individuals sharing a meaningful role as stewards and guardians of this precious ecosystem.

Situated just 3km or 5 minutes from the pristine shores of Valla Beach, 10 minutes from Nambucca Heads, and 25 minutes from the vibrant hub of Coffs Harbour, Koala Valley Estate offers unparalleled access to unspoiled beaches, prime fishing estuaries, and the conveniences of modern regional living. Parks, playgrounds, and nearby recreational facilities provide ample opportunities for relaxation and quality time with loved ones.

At Koala Valley Estate, we're building more than homes – we're cultivating a way of life. This visionary development exemplifies how sustainable housing can coexist with nature, fostering a close-knit community bound by shared values and a commitment to environmental preservation. By adopting best-practice conservation principles, we're ensuring the land's beauty and biodiversity endure for generations.

Why Choose Koala Valley Estate?

Spacious Lots: Designed for privacy, comfort, and connection to nature.

Conservation at the Core: A 7.35-hectare Koala Feed Tree Conservation Lot ensures environmental integrity.

Prime Location: Close to Valla Beach and regional centers, offering the best of both worlds.

Community Spirit: A shared commitment to living harmoniously with the environment and each other.

For those seeking more than just property ownership – for those longing for a lifestyle enriched

0 BED | 0 BATH | 0 CAR

PRICE:
Contact Agent

OPEN FOR INSPECTION:
N/A

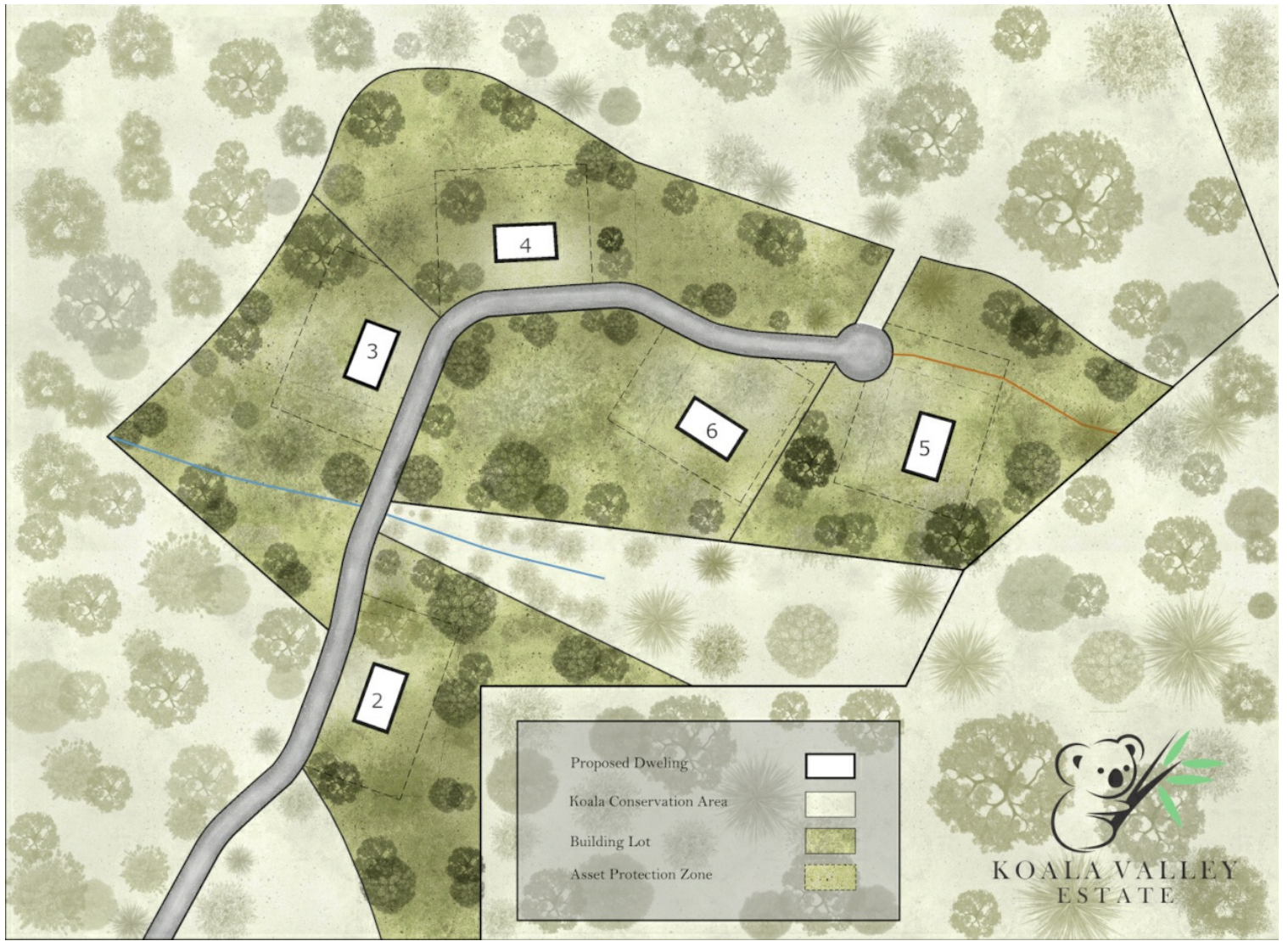


Simon McPherson

0432073130

simonmcpherson@atrealty.com.au

www.atrealty.com.au



Disclaimer: Please note this floor plan is for marketing purposes and is to be used as a guide only. All dimensions are estimates only and may not be exact measurements.