



Fewtrell Realty @realty



SOLD

OUTSTANDING INVESTMENT

Executive living at its best with this outstanding property, located 900m from Gympie South State School and 2.5kms to Gympie CBD.

This near new home boasts ducted air conditioning throughout, 4 decent sized bedrooms, 3 with built-ins and the main bedroom has an ensuite with floor to ceiling glass shower screen and high flow showerhead plus a large walk-in-robe. Spacious open plan living area which looks out over the 4.5m x 4.5m covered entertaining area to the near new 8m x 3m inground pool with 2m x 4m swim out area. Bright modern kitchen with 5 burner gas stove and electric oven, stainless steel dishwasher and heaps of cupboard space and Caesar Stone benchtops. Also 2.5m high ceilings and a nice dark media room.

You have a double lock-up garage with remote door plus an 8m x 5m Colorbond shed with power, internet and TV connections. 9.9kw grid connect solar system with capacity to plug in a generator.

The 820m2 flat to gently sloping allotment is extremely private, fully fenced with 1.9m fencing. You have a fire pit with timber seating and a range of fruit trees and vegetable garden.

This lovely property set in a quiet cul-de-sac surrounded by quality new homes would be a great place to raise your family or a comfortable retirement property or great investment. Currently tenanted with great tenants showing an excellent return.

Call me to arrange an inspection, you will be impressed.

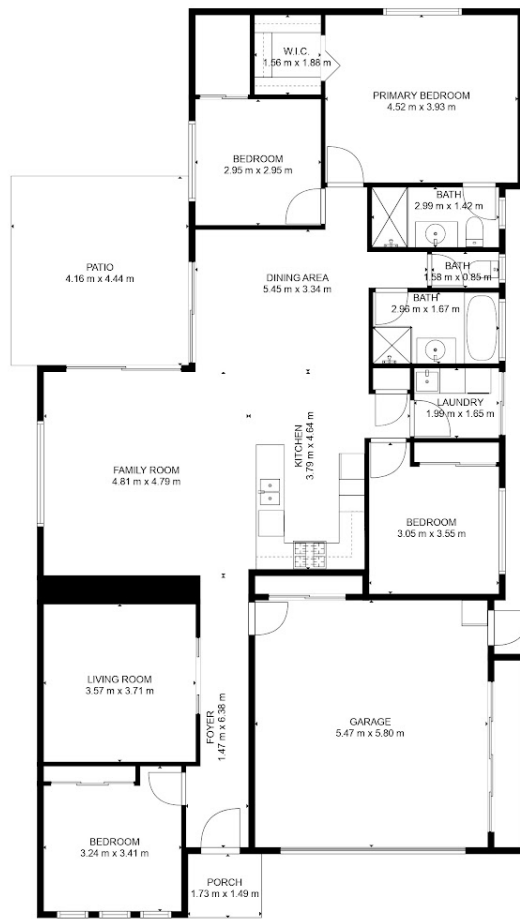
4 BED | 2 BATH | 3 CAR

PRICE:
\$758,000

OPEN FOR INSPECTION:
N/A



Wayne and Christine Fewtrell
0408450856
christine@atrealty.com.au
www.fewtrellrealty.com



GROSS INTERNAL AREA
 FLOOR 1: 153 m², EXCLUDED AREAS:
 GARAGE: 32 m², PATIO: 19 m²
 PORCH: 3 m²
 TOTAL: 153 m²

MEASUREMENTS ARE CALCULATED BY CUBICASA TECHNOLOGY. DEEMED HIGHLY RELIABLE BUT NOT GUARANTEED.

Disclaimer: Please note this floor plan is for marketing purposes and is to be used as a guide only. All dimensions are estimates only and may not be exact measurements.