

## FOR SALE

### CONTEMPORARY COASTAL HOME | STONE FEATURES, HIGH CEILINGS AND SOLAR PASSIVE DESIGN | SWEEPING OCEAN, PARK & DUNE VIEWS

Shore | Countdown

Absolutely All Offers By 5pm Wednesday February 21

(sellers reserve the right to sell prior)

**WILL BE SOLD.**

Perched high on the hilltop, only two houses back from the ocean on a sun drenched north facing corner site, this home soaks up the ocean views, is bathed in northern sunshine and is protected from the summer southwesterlies and winter storms.

The solar and environmentally passive design capitalises on this location in every conceivable way. Living areas face north on both levels as does alfresco kitchen, entertaining and pool. High skillion roofs have opening windows at ceiling height aiding convection.

Beautiful external stone work is continued indoors to the feature stone fire place, all of which reference the iconic seawall along the City Beach Waterfront with its stacked Toodyay stone design. Imagine cranking up the fireplace to the backdrop of storms approaching over the ocean in the cooler months. Such atmosphere! Rich warm use of quality natural timbers and high quality kitchen and bathrooms in elegant, neutral coastal hues complete the design palette.

Considered design separation with kids/ guests on the ground floor and adults living and master suite up, create the most functional of floorplans.

Are you at, or heading to the stage of life when the kids are nearing adulthood you wish to indulge in more overseas travel or spend more time at the beach house?

Two levels serviced by an elevator offer you longevity of tenure here. This combined with an easy care lifestyle lot make this the rarest of the rare of City Beach offerings - the perfect downsizer lock and leave home! And the corner lot gives an uncompromised feeling of space.

**3 BED | 2 BATH | 2 CAR**

PRICE:

Shore | Countdown

OPEN FOR INSPECTION:

N/A



**Scott Swingler**

**0403344649**

[scott@shore-property.com.au](mailto:scott@shore-property.com.au)

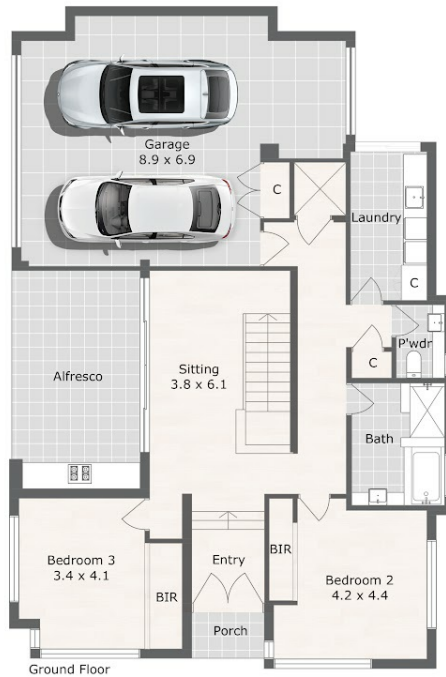
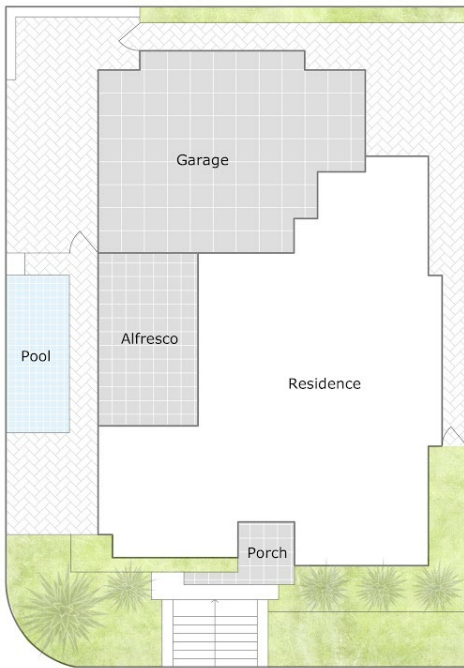
Shore Property

#### Approximate Areas:

Ground Floor	121 m <sup>2</sup>
First Floor	175 m <sup>2</sup>
Alfresco	21 m <sup>2</sup>
Balcony	39 m <sup>2</sup>
Garage	54 m <sup>2</sup>
Porch	2 m <sup>2</sup>



**Total 412 m<sup>2</sup>**



## 25 Dilkara Way, City Beach WA 6015

Care has been taken to ensure the accuracy of this floor/site plan, however all dimensions and areas should be considered as approximate. It has been produced as a guide for the purpose of the property sale or lease only. No credit is taken for the original building or landscape design. This floor plan/site plan design is subject to strict copyright and should not be reproduced, copied or altered without prior consent. The Agent, Vendor & Finesse Photography will not be held liable or responsible for any error, omission, misstatement or use of any data shown on this plan.



**FINESSE**

Disclaimer: Please note this floor plan is for marketing purposes and is to be used as a guide only. All dimensions are estimates only and may not be exact measurements.