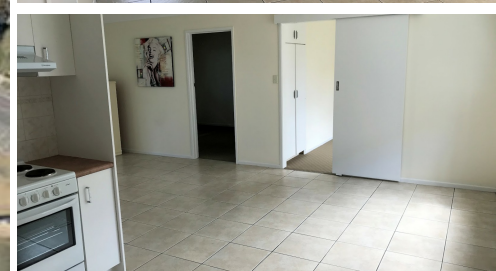


1/11 PALM AVENUE, BONGAREE, QLD, 4507



FOR LEASE

APPLICATIONS PRIOR TO VIEWING - GROUND FLOOR - 3 BEDROOM UNIT

GRAY Property Services would like to present this lovely unit located less than 200 metres from the calm waters of the Pumicestone Passage. This tidy three bedroom unit is in a great position for those strolls along the waterfront. BREAK LEASE

The unit is a very functional design and the bathroom has been recently renovated. The complex includes a shared laundry and the residents have made a wonderful seating area to be shared by all, giving a perfect view of the crystal clear water way. You also have use of the full length weatherproof veranda.

Features consist of

- 3 bedrooms
- Tiled open plan living area
- 1 renovated bathroom with shower over bath
- Security Screens
- Ground floor
- Waterproof verandah
- Single carport
- 200 metres from Pumicestone Passage

Please contact Cassandra to arrange a viewing on 0407411644

TO INSPECT OR APPLY:

To register (or apply) for this property please click on the get in touch button and send your details to our agency. You'll receive an email back with instructions on how to register and apply via our website and booking service.

We do NOT accept 1Form, Ignite, 2Apply or any other online type of tenancy application form. You must apply using the the provided application link sent to you once you enquire or Form 22 Application provided

3 BED | 1 BATH | 1 CAR

PRICE:
\$425 per week

OPEN FOR INSPECTION:
N/A



Cassandra and Cameron Gray
0431316679

cgray@atrealty.com.au
www.atrealty.com.au