



SOLD

PERFECT FOR EASY LIVING.

When you are looking for the retirement lifestyle, easy living, low maintenance, in a great location and on your own title. The chances to fill this list is quite difficult, but this home ticks all the boxes.

Located in a tree lined street walking distance to shops and parks, this character but relatively new built home sits on a level allotment.

Easy care gardens complement this attractive home.

Two good size bedrooms both with built in robes, main with feature window, both bedrooms have the popular Hampton style window shutters, giving a great look and block out effect.

Floating timber floors flow through the entrance hallway and living areas and there is carpet to the bedrooms.

Open kitchen meals family room features north facing windows, perfect for the warm winter sun to filter through. A Classy kitchen with modern stainless-steel appliances, 900cm Oven and hotplates, dishwasher, breakfast bar and a step-in pantry complements this great living space. Sliding doors from the family room leads to a covered patio area making a great space for entertaining family and friends.

The bathroom is stunning with classy tiles and fittings and a separate toilet. The laundry has plenty of bench and cupboard space.

Split System air-conditioning, ceiling fans and electric feature fireplace, keeps the home the right temperature all year round.

Feature Chinese maple in the rear yard shades you from the hot summer sun plus an easy-care garden with garden shed complement the rear yard.

Single garage under the main roof with remote door keeps the home safe and secure.

Presentation of the home is a credit to its owner and an inspection is certainly recommended.

RLA 269823

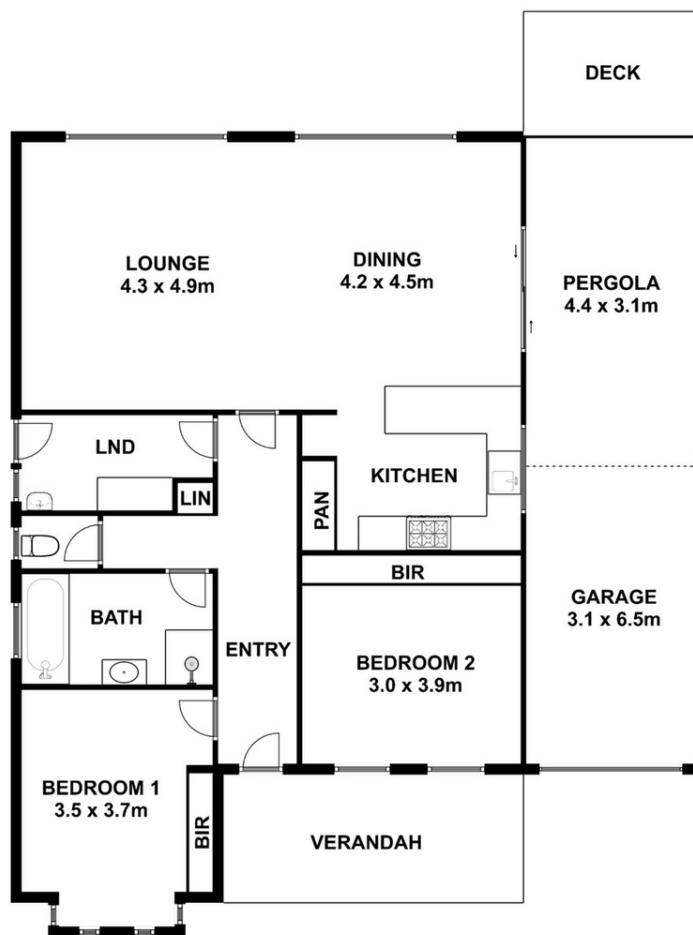
2 BED | 1 BATH | 1 CAR

PRICE:
\$410,000

OPEN FOR INSPECTION:
N/A



Peter Dempsey
0418854393
peterdempsey@atrealty.com.au
peterdempseyatrealty.com
RLA: 269823



This drawing is for illustration purpose only. All measurements are approximate only and information intended to be relied upon should be independently verified.

Disclaimer: Please note this floor plan is for marketing purposes and is to be used as a guide only. All dimensions are estimates only and may not be exact measurements.