



FOR SALE

PREMIERE LIFESTYLE ACREAGE - 'MOTIVATED SELLER'

Are you looking for a spacious, luxurious property that has it all? Look no further! With ~2 acres ideally located in the sought after South-East QLD McIntosh Creek district (just south of Gympie), this stunning 4 bed, 2 bath home, with extensive infrastructure is beautifully presented and ready for your enjoyment.

Built in 2008, this home is designed for family and entertainment. Overlooking the property, the huge covered deck and home embrace relaxation and easy management, with water irrigation from the large dam and 20k gallons of tank storage. The surrounding hills of Pie Creek make sunsets a constant pleasure and with high ceilings, it almost makes the air conditioning and ceiling fans unnecessary, whilst the fireplace and wall insulation keep the house warm in winter. The 8.5kW Solar setup will also keep those costs down.

The internet/mobile coverage are excellent making working from home possible, but if you must leave, Noosa and Sunshine Coast are only a short drive away with easy access to the Bruce Highway.

Inside the home the kitchen is every chef's dream! Equipped to provide you everything you need for a home cooked meal or to entertain the masses, including a 900mm Gas stove/oven, island bench, dishwasher, walk-in pantry, and wide long bench tops with ample storage. There are four spacious bedrooms, all offering built-in wardrobes and high ceilings. The modern treatments, security screens and an open spacious floor plan makes this safe/quality home superior to most!

This executive property is situated on a generous 7,636 sqm of land, so you won't be short of space. With ample secure parking for your 6+ cars, which includes a 7x7m 2 bay garage, a separate double bay 3.1m roller / 7x10m deep shed and further shedding available for all your items.

The property is dog fenced, complete with dam pump for irrigation and water setup across the property. 3 Phase Power is installed to the property. The property also sits on a quiet country road which makes access and security for any large vehicle a breeze. There is also a range of mature fruit trees planted on mostly flat land sloping gently at the back down to the dam.

4 BED | 2 BATH | 6 CAR

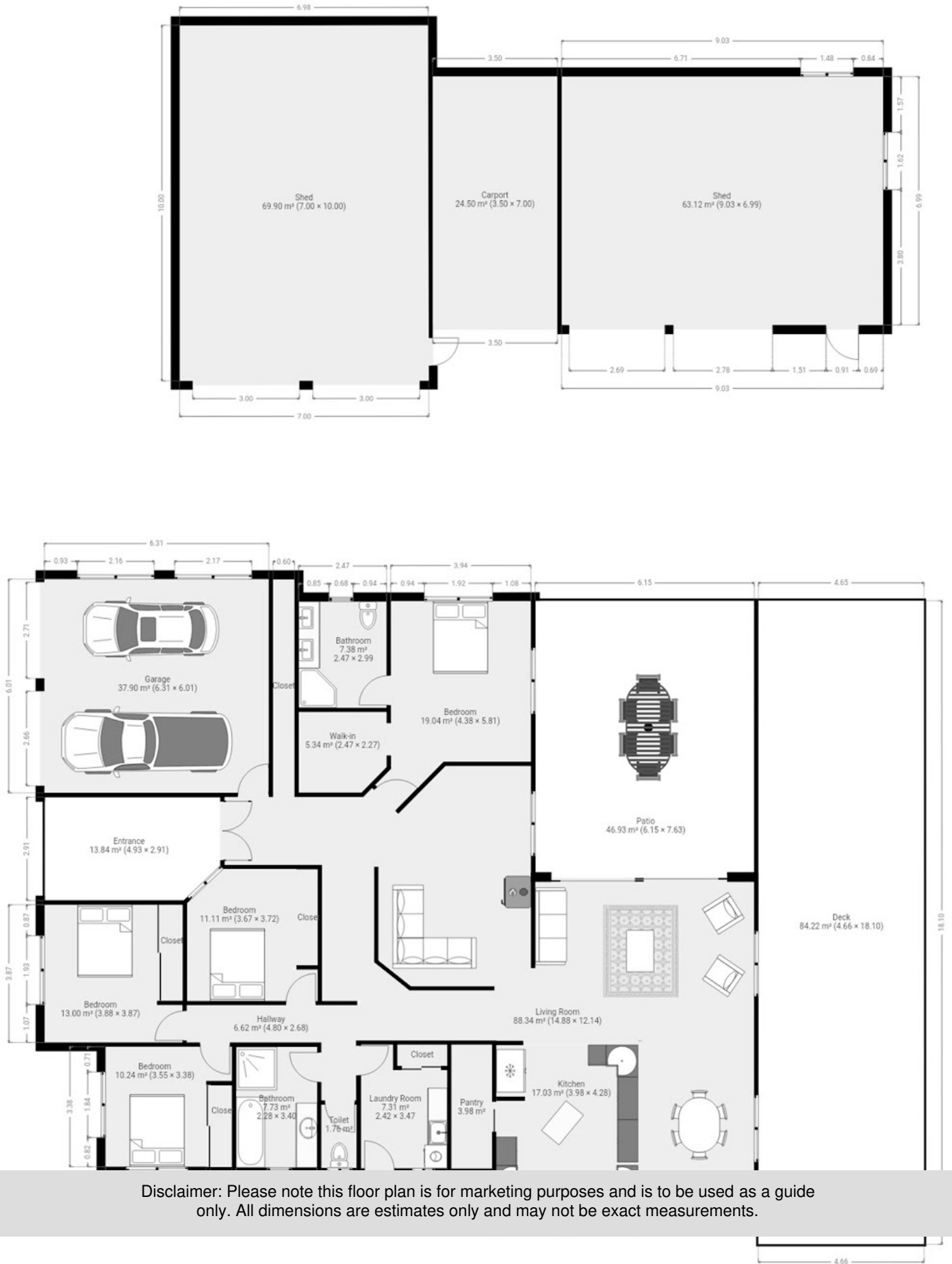
PRICE:
\$1,180,000

OPEN FOR INSPECTION:
N/A



Daniel Engeman
0423293834
daniel.engeman@atrealty.com.au
Engeman Realty

422 McIntosh Creek Rd McIntosh Creek



Disclaimer: Please note this floor plan is for marketing purposes and is to be used as a guide only. All dimensions are estimates only and may not be exact measurements.

Daniel Engeman
0423293834

daniel.engeman@atrealty.com.au

Engeman Realty

@realty

PROVIDED WITHOUT WARRANTY OF ANY KIND. SENSOPIA DISCLAIMS ANY WARRANTY INCLUDING, WITHOUT LIMITATION, SATISFACTORY QUALITY OR ACCURACY OF DIMENSIONS.

