



**SOLD**

## BEAUTIFUL MODERN 4 BEDROOM 2 BATHROOM HOME

Discover the pinnacle of modern living in this pristine, untouched 4-bedroom, 2-bathroom home. Embodying contemporary elegance, this residence offers a lifestyle of luxury and convenience.

Two bedrooms boasting built-in wardrobes, while the master suite takes indulgence to new heights with his and her wardrobes, accompanied by a master ensuite featuring a double vanity and a spacious bath. The main bathroom echoes this opulence with its own comforting bathtub.

The heart of this home is a state-of-the-art kitchen designed for culinary enthusiasts, featuring gas cooking, a pantry, dishwasher, and an inviting island perfect for both meal preparation and entertainment.

Enjoy the convenience of a separated laundry room equipped with a large linen cupboard. Stay comfortable year-round with ducted air conditioning seamlessly flowing throughout the house.

Park your vehicles with ease in the double car garage, complete with a storage room for your convenience. Revel in the freedom of backyard side access, offering endless possibilities.

Entertain guests in style under the covered outdoor area, complete with ceiling fans and plumbing set up for an outdoor kitchen, creating the perfect ambiance for gatherings.

This home boasts practicality with 4 rainwater tanks and instant gas hot water, ensuring sustainability and efficiency.

Situated in the sought after Watagan Park, only a 6-minute drive from the water, and with local shops, schools, and medical facilities in close proximity, this property offers both tranquillity and convenience.

Don't miss out on the chance to make this exquisite property your home. Contact Tom or Brad today to arrange a private viewing!

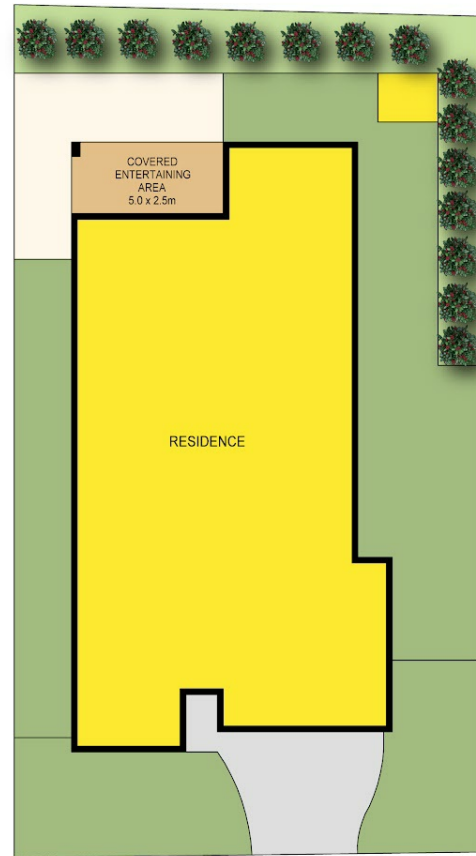
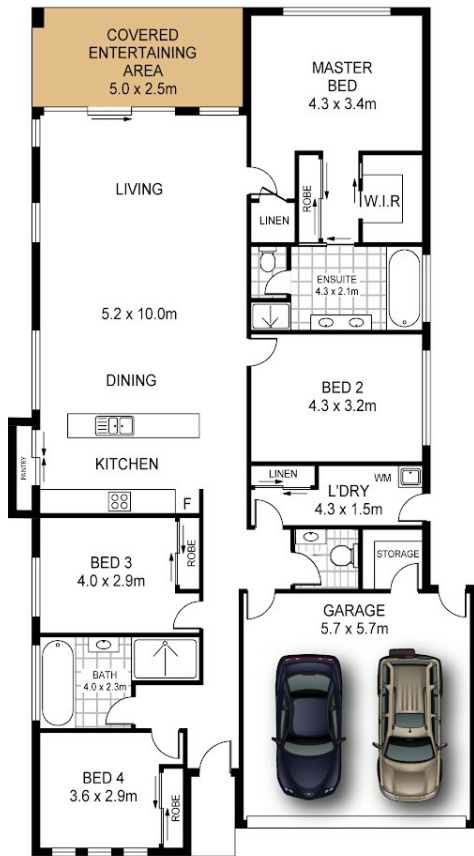
4 BED | 2 BATH | 2 CAR

PRICE:  
\$922,500

OPEN FOR INSPECTION:  
N/A



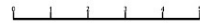
**Brad Barker**  
**0413875833**  
bradbarker@atrealty.com.au  
[www.atrealty.com.au](http://www.atrealty.com.au)



Land Area: 600 sqm



20 McCullough Street  
Cooranbong



Total Internal Floor Area: 188 sqm

Scale in metres Indicative only. Dimensions are approximate. All information contained herein is gathered from sources we believe to be reliable. However we cannot guarantee its accuracy and interested persons should rely on their own enquiries



Disclaimer: Please note this floor plan is for marketing purposes and is to be used as a guide only. All dimensions are estimates only and may not be exact measurements.