



# SOLD

## IDEALIC CORNER LOCATION!

Located in the over 50's gated community, the Townsville Eco Resort, south of Townsville, just 15 minutes from a major shopping centre and right next door to the emerging master planned community of Elliott Springs, is this neat on-site air-conditioned caravan, annex and ensuite bathroom. (See the attached site-plan.)

This quiet corner position has lovely views to the swimming pool and open areas with a lake and fountain beyond and includes a near-new fridge and washing machine.

The pet friendly resort has remote gate access with on-site managers, a community centre with swimming pool and covered entertainment area and the Black Barra bar and cafe, and is across the road from the famous Billabong Wildlife Sanctuary.

The site fees for the park are around \$215 per week plus electricity, with pensioners able to claim rent assistance on the site fees.

Buyers looking for an affordable alternative to big rents and property prices should consider this lovely home.

Call and arrange an inspection soon.

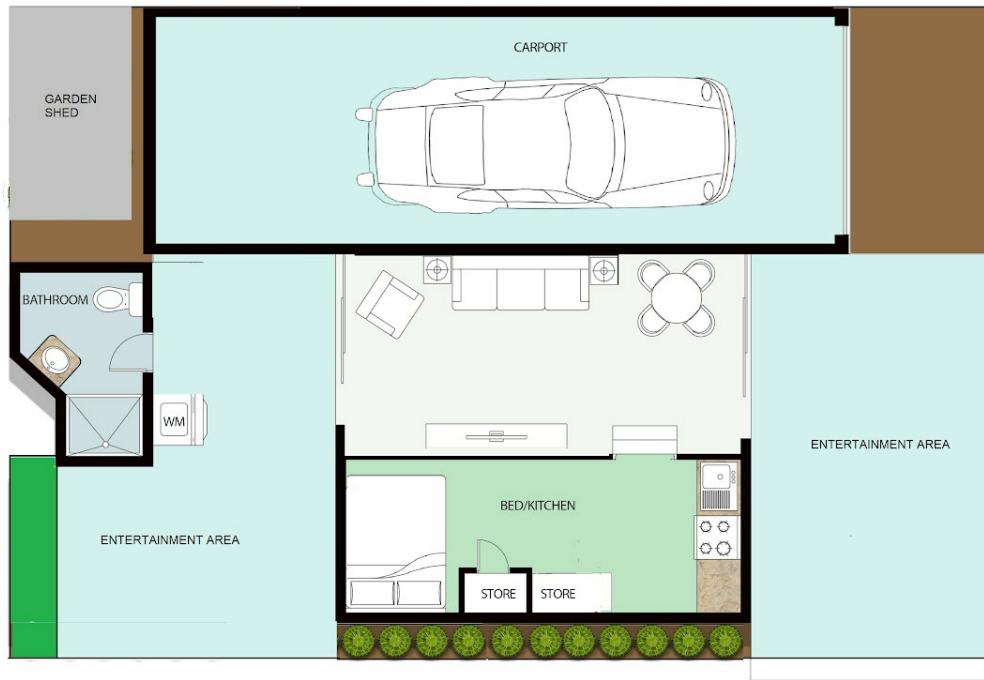
**1 BED | 1 BATH | 1 CAR**

**PRICE:**  
\$35,000

**OPEN FOR INSPECTION:**  
N/A



**Gerard Black**  
**0426779633**  
 gerardblack@atrealty.com.au  
[www.atrealty.com.au](http://www.atrealty.com.au)



This floor plan including furniture, fixture measurements and dimensions are approximate and for illustrative purposes only. BoxBrownie.com gives no guarantee, warranty or representation as to the accuracy and layout. All enquiries must be directed to the agent, vendor or party representing this floor plan.

37/1 Muntalunga Drive, Nome, Q, 4816

Disclaimer: Please note this floor plan is for marketing purposes and is to be used as a guide only. All dimensions are estimates only and may not be exact measurements.