

3 ALBATROSS AVENUE, HAWKS NEST, NSW, 2324



SOLD

QUALITY, SPACE AND STYLE IN A SOPHISTICATED PACKAGE

Coming home to a spacious and stylish sanctuary in this three-bedroom Hawks Nest property, constructed of brick and tile on an 826sqm block, this family home makes no compromises.

Built by AV Jennings the home has been immaculately maintained inside and out. The home's architecturally interesting footprint and meticulously landscaped gardens provide instant kerbside appeal with a sense of grandeur.

The floor plan inside has a practical design, with good separation between the living and sleeping zones and plenty of room for growing families to spread out. The home features three good-sized carpeted bedrooms, with either built-in or walk-in wardrobes for ample storage and the master suite includes its own private ensuite.

Both the ensuite and the family bathroom have been beautifully finished with modern vanities, and showerscreens, with a built-in bath adding family-friendly practicality in the main bathroom. A well-appointed laundry with built-in cabinetry completes this section of the house.

The home's real attractions, however, can be found in the multiple spacious living areas that ensure the property is well suited to growing families. Large enough to cater for multiple cooks, the kitchen has an expansive footprint with large return benchtop, window servery to outside alfresco area and breakfast seating that will cater for casual meals or entertaining.

Providing plenty of space for large families or guests, the home features two living areas including a lovely front lounge and a large living room off the kitchen with wood fire and split system air-conditioning supplying year round comfort, while adjoining dining space will cater for the larger dinner parties with style and elegance.

The home also includes an attached double garage with rear sliding door access at the back of the block, giving you plenty of room for all your family vehicles, motorbikes, tools, and other storage needs. There is also a large garden shed for all your gardening requirements.

Surrounded by other prestige homes on similarly large blocks, this property offers an enviable address close to conveniences, with schools, shops, parks and beach within walking distance.

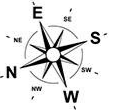
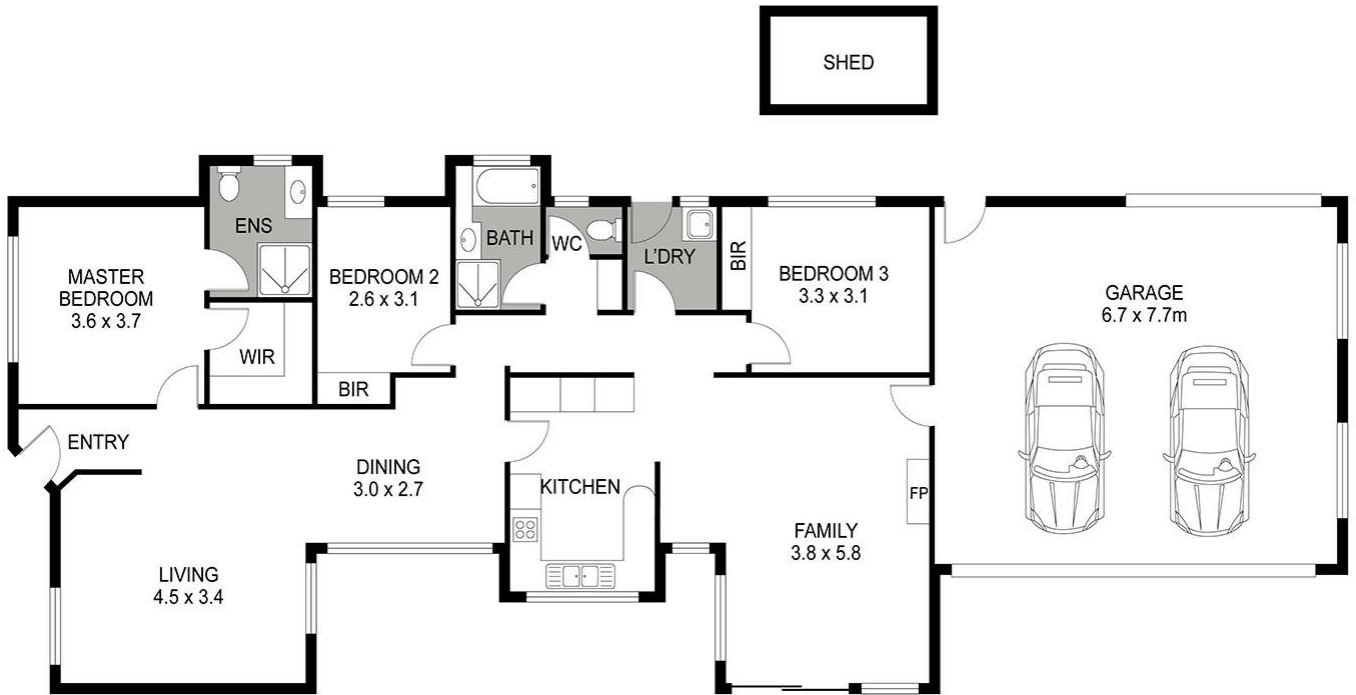
3 BED | 2 BATH | 0 CAR

PRICE:
\$883,000

OPEN FOR INSPECTION:
N/A



Debra Thomson
0450528440
debrathomson@atrealty.com.au
www.atrealty.com.au



Scale in meters. Dimensions are approximate. All information contained herein is gathered from sources we believe to be reliable. However, we cannot guarantee its accuracy and interested persons should rely on their own enquiries.

POWERED BY **SMILE ELITE**
PROUD PARTNERS WITH SYDNEY COUNTRY LIVING

Disclaimer: Please note this floor plan is for marketing purposes and is to be used as a guide only. All dimensions are estimates only and may not be exact measurements.