

638 MARKWELL ROAD, BULAHDELAH, NSW, 2423



SOLD

A LOVELY RURAL LIFESTYLE BECKONS

Come and inspect this appealing home situated amongst beautiful native trees and shrubs alive with birdlife. Behind a rustic post and rail fence and sited on a tranquil 4000sqm block, this property offers a peaceful rural lifestyle.

Boasting wide front and rear verandahs, timber-lined cove ceilings, fresh interior décor in stylish muted tones and lovely, easy-care engineered floorboards. The renovated kitchen with ample bench space, an abundance of cabinetry, electric cooking, large pantry and roomy island bench with breakfast bar.

For alfresco dining and entertainment, the spacious covered rear verandah is the ideal spot. There are three bedrooms, two queens with built-ins, the premier suite enjoying dual aspect, and a smaller, double bedroom which lends itself to a home office or study. Renovated to include dual vanities, spacious shower and separate toilet, the light and bright bathroom more than meets every need.

There's also a well-proportioned laundry with external access.

Additional features include slow combustion heating, reverse-cycle air-conditioning, ceiling fans and 22 eco-friendly solar panels feeding back to the grid, large domestic water tank, garden water tank and traditional septic waste management system. There's also a double garage with dual roller doors. Set away from the home is a quirky, fully lined granny flat, the perfect teenager's retreat. A spacious anteroom with sink and extensive cabinetry allows for the inclusion of a kitchenette. The property also boasts a double garage with dual roller doors, chicken palace and shedding for garden tools.

The land is slightly sloping, cleared to grassland with stands of stately eucalypts along each boundary. With its picturesque valley location, sealed road access and an outlook that takes in lovely rural views, this delightful property is ready for you to turn the key in the door and make the property your own. A convenient location only 5 minutes from Bulahdelah township with its schools, shops, café, services and waterways will excite and inspire you.

Disclaimer: The information detailed above is provided by our vendors and as a result, Debra Thomson Property makes no representations as to its accuracy. Interested parties are encouraged to conduct their own due diligence in relation to every property they consider

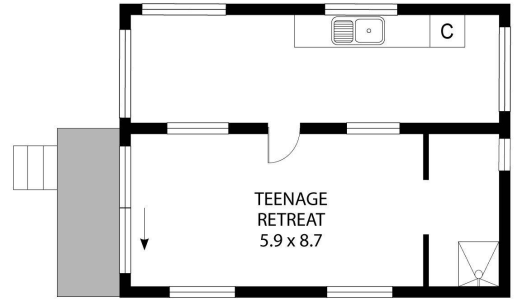
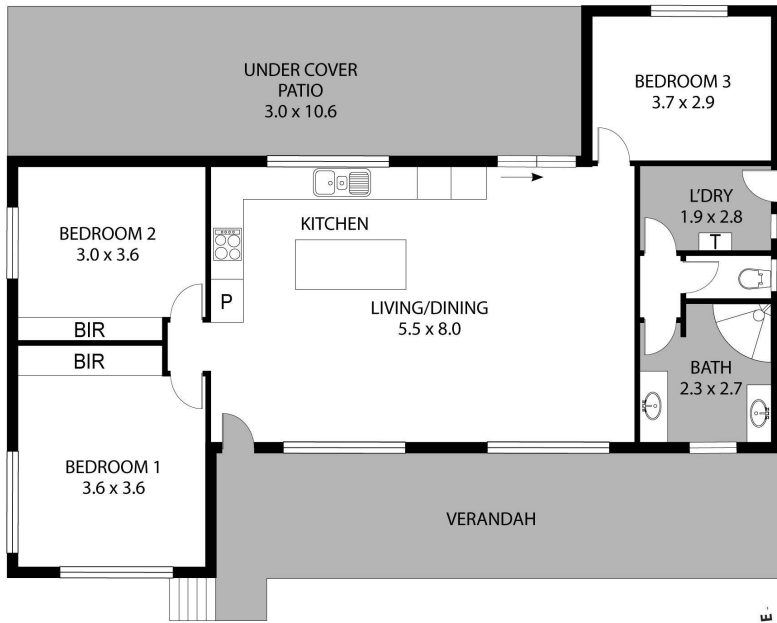
3 BED | 1 BATH | 0 CAR

PRICE:
\$576,000

OPEN FOR INSPECTION:
N/A



Debra Thomson
0450528440
debrathomson@atrealty.com.au
www.atrealty.com.au



Scale in metres. Dimensions are approximate. All information gathered herein is believed to be reliable, however we cannot guarantee its accuracy and interested person should rely on their own enquiries.

POWERED BY **SMILE ELITE™**
PROUD PARTNERS WITH SYDNEY COUNTRY LIVING

Disclaimer: Please note this floor plan is for marketing purposes and is to be used as a guide only. All dimensions are estimates only and may not be exact measurements.