

SOLD

WALK TO THE BEACH - BEAUTIFUL FAMILY HOME

This beautiful 4 or 5 bedroom home will appeal to many buyers looking for a beach lifestyle. At the front entrance you will find a paved, private & secure courtyard that is perfect as a play area for kids or ideal spot for a portable spa or a firepit. Walk on in & you will find a spacious parents retreat featuring a gorgeous new ensuite with bath for those relaxing soaks after work. Plantation window shutters are also featured throughout this light filled home.

The 2nd living room with its own access, comes complete with a brick fireplace & has been converted to include an ensuite & small kitchenette. Perfect for those needing extra room for mum/dad, teenagers or possibly to Air BnB.

There are 2 more good sized bedrooms on this level both with built in robes and access to the fully renovated main bathroom.

Upstairs you are greeted with an abundance of light in the modern kitchen with dishwasher, that is open plan to dining, lounge room & expansive undercover deck. With glass balustrades surrounding the deck, it allows an uninterrupted view to kids playing in the inground swimming pool and also the beautiful nature reserve next to this home.

Upstairs to the guest retreat that features its own undercover deck, & small ocean views plus built in robes.

To complete this package there is solar power, a large double lock up garage with remote control, vegie gardens and it is situated close to primary school. Located within a short walk to pristine beaches, don't let this opportunity pass you by.

4 BED | 3 BATH | 2 CAR

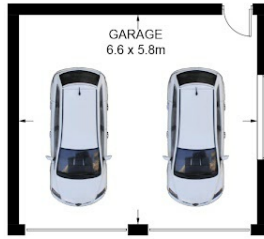
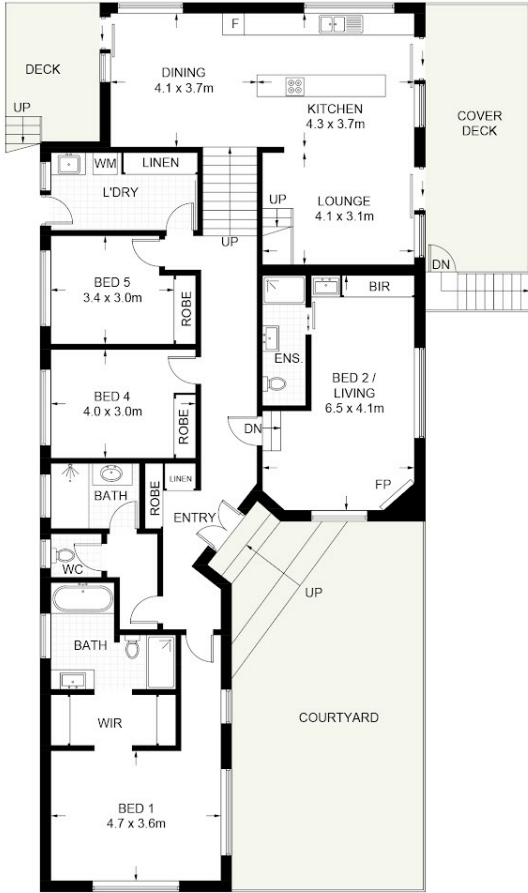
PRICE:
\$1,050,000

OPEN FOR INSPECTION:
N/A



Nicole Stark
0437500962
nicolestark@atrealty.com.au
www.atrealty.com.au

Approximate Gross Internal Area = 260 sq m



(Not Shown in Actual Location / Orientation)



4 Korora Bay Drive, Korora NSW 2450

DISCLAIMER: PLANS SHOWN ARE FOR PRESENTATION PURPOSES AND ARE NOT PART OF ANY LEGAL DOCUMENT. ALL MEASUREMENTS AND FIGURES ARE APPROXIMATE.

Disclaimer: Please note this floor plan is for marketing purposes and is to be used as a guide only. All dimensions are estimates only and may not be exact measurements.

