


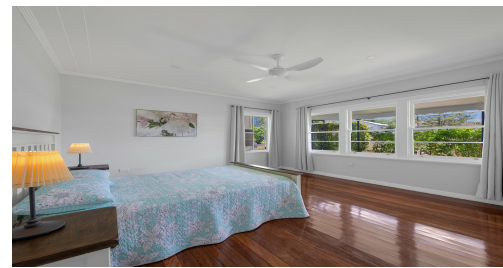
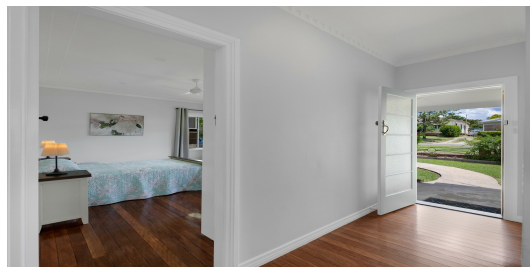


Sold

33 RIDGE STREET, SOUTH GRAFTON, NSW, 2460

3  | 2  | 1 



ARGUABLY THE MOST CHARMING, WELL PRICED PROPERTY OFFERED IN SOUTH GRAFTON, NOW!

PRICE:\$472,000

OPEN FOR INSPECTION:
N/A

A pest and building report will be made available to genuine purchasers

There are a few streets in South Grafton that really light a fire in my heart. They may not be the most expensive Streets, they aren't the highest on hill, however they are the Streets lined with the character-filled homes of yesteryear.

We are looking for a buyer who appreciates the style, construction quality, and charm of a period home. We are estimating #33 to be mid-century, as there are some subtle art-deco accents popping from the classic weatherboard canvas.

From what we can gather, this home has been mainly owner occupied from the beginning of its time, reflecting in its current presentation. From the art-deco fence, the winding path to the curved ceiling over the patio, the details pop from beginning to end.

The weatherboard home has been recently painted and the colour scheme impressive. The blend of Hamptons navy & white trims, mixed with a stark black tile roof, is made refreshingly warm by the light cream boards. Step through the opaque glass and sage timber door and you are on the glorious, polished timber floorboards. High ceilings are a feature throughout, downlights add a modern touch, fans, multiple air conditioners, the woodfire heater, built-in robes to 2 of the 3 bedrooms and two bathrooms are impressive features. The colour palette is on-trend internally also!




Kylie Swift // 0488 161 621
Have your pick of dining tables or even set up 2000+ rooms. As an extension has catered for

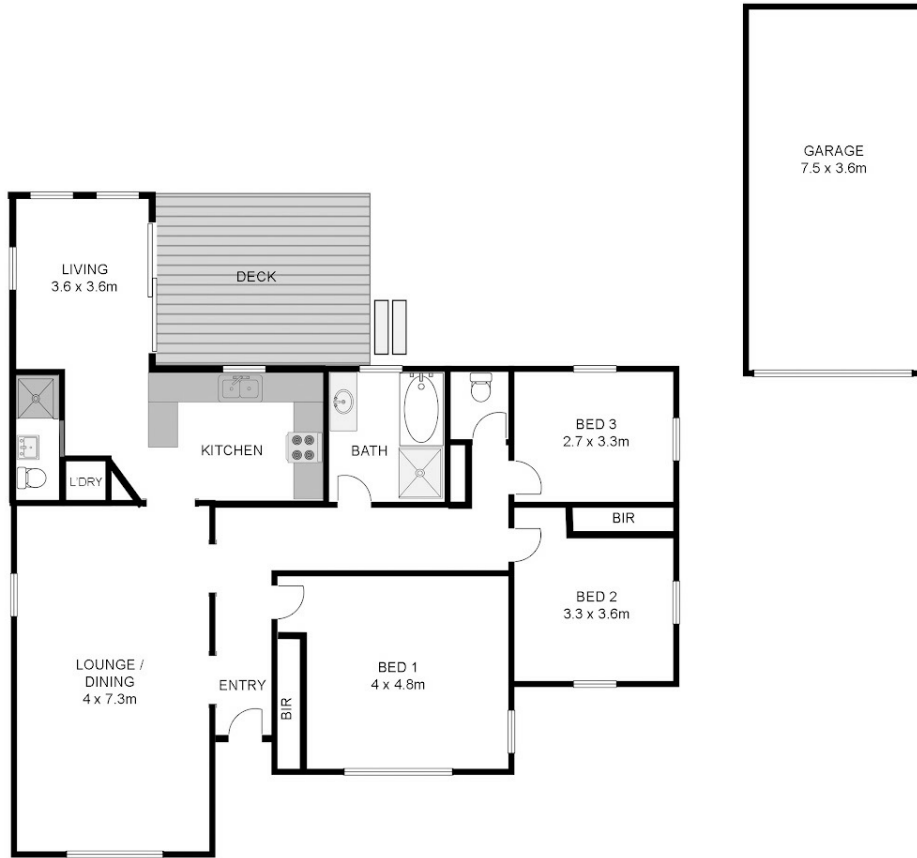
kylie@virtueproperty.com.au // www.virtueproperty.com.au



Sold

33 RIDGE STREET, SOUTH GRAFTON, NSW, 2460

3  | 2  | 1 



33 Ridge St South Grafton

Whilst every attempt has been made to ensure the accuracy of the floor plan contained here, measurements of doors, windows, rooms and any other items are approximate and no responsibility is taken for any error, omission, or mis-statement. This plan is for illustrative purposes only and should be used as such by any prospective buyer.

Kylie Swift // 0488 161 621

kylie@virtueproperty.com.au // www.virtueproperty.com.au

