



SOLD

QUALITY FAMILY HOME BOASTING AN EASY-CARE PROFESSIONALLY LANDSCAPED GARDEN.

Welcome to your dream home in the charming suburb of Crows Nest, Queensland. Nestled in the heart of Australia's stunning Sunshine State, this property is the epitome of comfort. As you pull up to the front of the house, you'll be greeted by a picturesque facade that exudes elegance and charm. The manicured lawn and garden create a welcoming and homely ambiance.

The garden is designed professionally so that it is easy to care for, garden beds are loaded with fertile soil, it only requires limited watering, and one can only describe the backyard as a tranquil Oasis. The garden flourishes with colour at the turn of every season, containing productive fruit trees, flowering orchids, and a variety of deciduous trees.

The interiors of this house have been thoughtfully designed to cater to the needs of a modern family. The living area boasts an open floor plan, allowing natural light to flood in and illuminate the space.

Features

- Modern open plan kitchen, breakfast bar, and spacious formal dining room.
- A relaxing formal lounge room, new floor coverings, and views of the front garden.
- King-size main bedroom, built-in robe and ensuite
- Plus, an additional two Queen-sized bedrooms with built-in robes.
- All bedroom windows look out over the garden.
- Tiled family bathroom.
- Plenty of built-in cupboard space throughout the home.

The large patio is conveniently located for easy entertaining, a place to relax with family and friends and enjoy the beautiful established garden, it has winding enchanted garden paths that lead you along to a well-established rainforest-style garden. The fenced-in backyard is very private and one can not see the neighbour's rooftops only the fauna in the foreground.

Split system heating and cooling systems are in the main bedroom and living areas and ceiling fans to keep you comfortable all year round.

For the garden enthusiast, there is a potting shade house, garden shed, and rainwater tank. Three-car accommodation includes a lockup garage with storage and a double carport with enough space to park the four-wheel drive. Reliable internet and mobile services.

3 BED | 2 BATH | 3 CAR

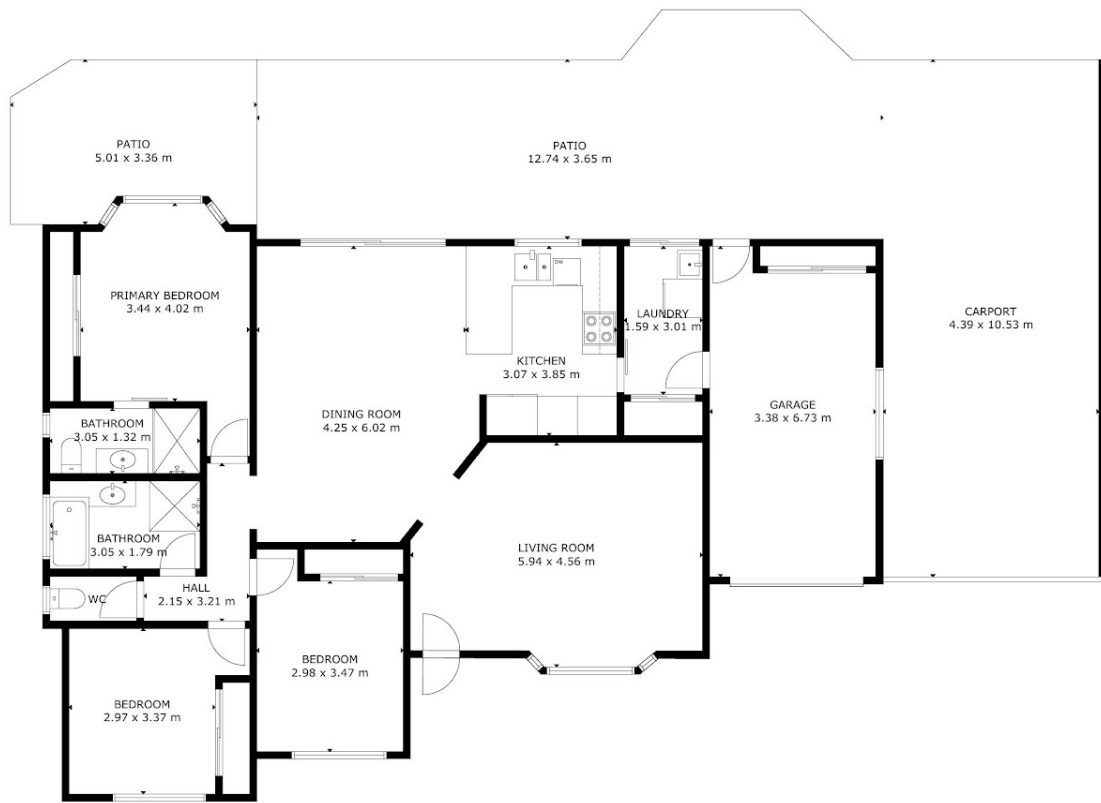
PRICE:
\$675,000

OPEN FOR INSPECTION:
N/A



Yvonne Bradley
0408181146

yvonne@atrealty.com.au
www.atrealty.com.au



GROSS INTERNAL AREA
 TOTAL: 129 m²
 GROUND FLOOR: 129 m²
 EXCLUDED AREAS: GARAGE: 23 m², PATIO: 65 m², CARPORT: 46 m²
 SIZE AND DIMENSIONS ARE APPROXIMATE, ACTUAL MAY VARY

GROUND FLOOR

Disclaimer: Please note this floor plan is for marketing purposes and is to be used as a guide only. All dimensions are estimates only and may not be exact measurements.