



SOLD

PRIVATE OASIS OR DEVELOPERS DELIGHT!

Escape the hustle and bustle of city life and embrace the tranquility of this idyllic acreage home. Nestled on 6.7 acres of lush greenery, this property offers a perfect blend of comfort, convenience, and nature's beauty.

The family friendly boasts 3 bedrooms, 2 bathrooms, spacious living room, rumpus room, open plan kitchen / dining, teenagers retreat and multiple patio areas offering a variety of entertaining and lifestyle options.

Just far enough away from the hustle and bustle of town yet close enough for all your requirements. The location is ideal with the picturesque Glass House Mountains on your doorstep, stunning sunny coast beaches within 40 minutes and Brisbane CBD within 1 hour.

LAND: 6.7 Acres (Potential Development)

HOME FEATURES:

- Steel Framed brick home
- Three living areas
- Modern kitchen with loads of storage
- Separate dining
- Spacious Lounge room with new air-conditioning
- Rear rumpus room
- Rear patio
- Front enclosed sunroom
- Front porch
- Master bedroom with walk in robe, ensuite & air-conditioning
- 2 additional bedrooms with built in robes
- Teenagers retreat (6x6m)(In shed) – Insulated & lined with power points
- Family Bathroom
- Security screens
- 23,600 litre poly tank
- Tank water with 2 concrete tanks - (27,000 Litre & 33,000 Litre)
- 4 Horse paddocks
- 1 large chicken coop

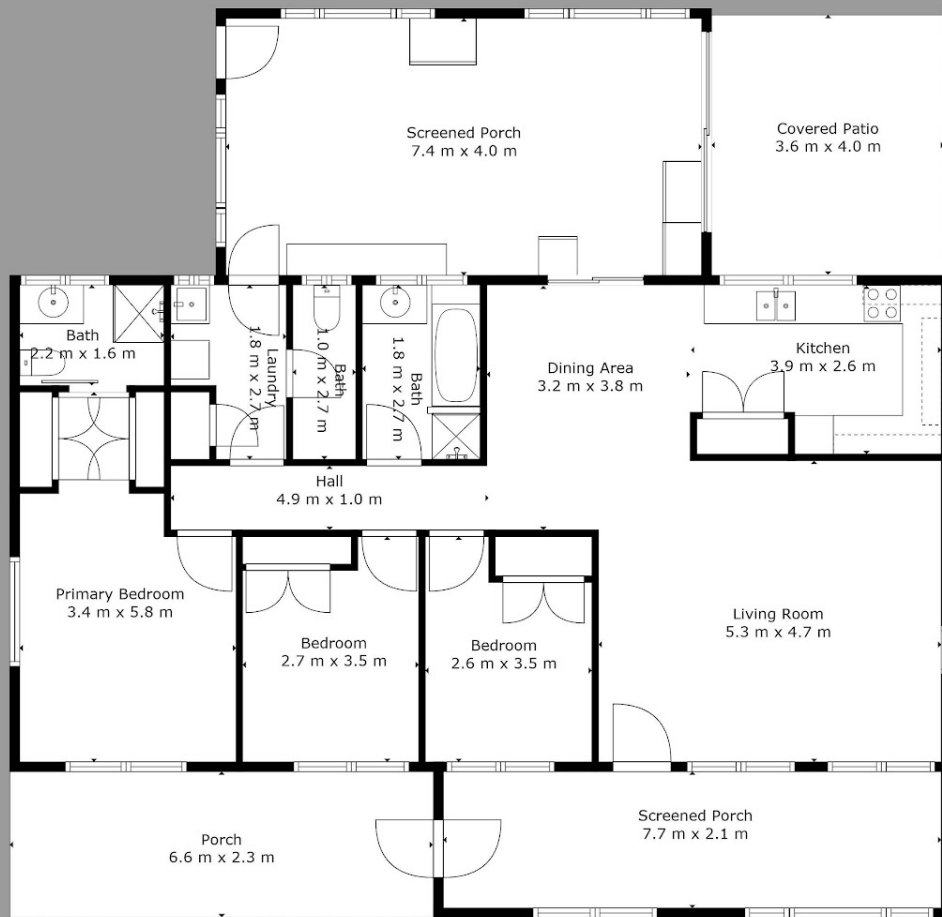
3 BED | 2 BATH | 3 CAR

PRICE:
\$930,000

OPEN FOR INSPECTION:
N/A



Mitchell Younger
0488458887
mitchell.younger@atrealty.com.au
www.atrealty.com.au



Measurements Are Calculated By Cubicasa Technology. Deemed Highly Reliable But Not Guaranteed.



Disclaimer: Please note this floor plan is for marketing purposes and is to be used as a guide only. All dimensions are estimates only and may not be exact measurements.

Mitchell Younger
0488458887
 mitchell.younger@atrealty.com.au
www.atrealty.com.au

