



FOR SALE

5 BEDROOM HOME, BACKING RESERVE, GREAT AS INVESTMENT PROPERTY

This lovely 5 bedroom, 2 bathroom home is perfect for those needing room for an extended family, or looking for a great investment property.

To the front of this home you will find a spacious lounge room, a good size main bedroom with built in robes & air conditioning, plus 2 smaller bedrooms & renovated main bathroom.

There is a gorgeous central kitchen with a space for dishwasher, loads of cupboard space & walk in pantry that overlooks the dining room & small family room.

To the rear of the home there is another larger main bedroom with built in robe plus a 5th bedroom perfect for toddlers and an office space.

Outside on this 721sqm level block, you will find a fully fenced yard with an undercover Alfresco dining area, irrigated vegie gardens plus a 6m x 3m large garden shed.

Tradies will appreciate the side access to a large, powered 7.6m x 6.1m shed, great for car enthusiasts & storage.

With plenty of room for the kids to play in the back yard, this home also backs onto a beautiful bush reserve that you can access from the rear of property.

Including solar power, this home is situated in a sought after convenient location, & only a short walk to Shopping & Medical Centres, Cafes & schools. For those who love the beach, it is only 5 minutes up the road so don't miss out! Expected to rent for approx. \$750pwk.

5 BED | 2 BATH | 2 CAR

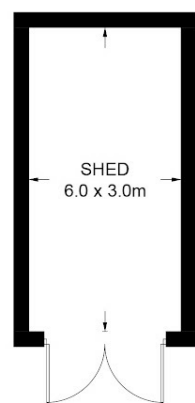
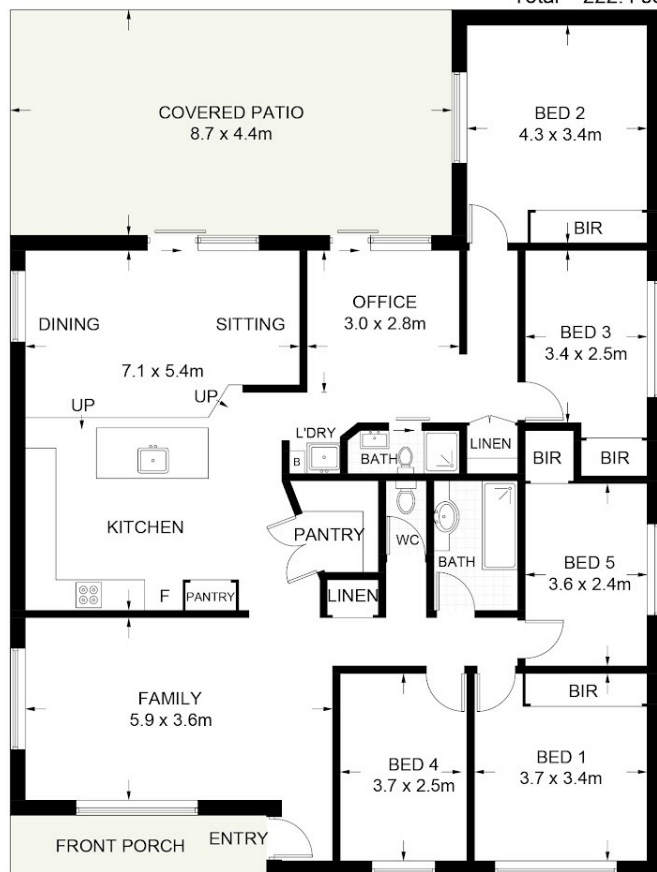
PRICE:
\$750,000 - \$775,000

OPEN FOR INSPECTION:
N/A



Nicole Stark
0437500962
nicolestark@atrealty.com.au
www.atrealty.com.au

Approximate Gross Internal Area = 157.7 sq m
Garage / Shed = 64.7 sq m
Total = 222.4 sq m



(NOT SHOWN IN ACTUAL LOCATION / ORIENTATION)



(NOT SHOWN IN ACTUAL LOCATION / ORIENTATION)



29 Bangalee Crescent, Toormina, NSW 2452

DISCLAIMER: PLANS SHOWN ARE FOR PRESENTATION PURPOSES AND ARE NOT PART OF ANY LEGAL DOCUMENT. ALL MEASUREMENTS AND FIGURES ARE APPROXIMATE.

Disclaimer: Please note this floor plan is for marketing purposes and is to be used as a guide only. All dimensions are estimates only and may not be exact measurements.