



FOR SALE

STUNNING COURTYARD APARTMENT WITH STUDY/MPR

Once you have moved in here just put your feet up and enjoy the feeling of peace and tranquillity in this private little nook of the Regatta Riverside complex. A brand-new feel welcomes you when you step inside thanks to a complete re-paint and luxurious new carpet. Located on the Podium level (two levels above the street) in Tower B, the apartment enjoys a north-easterly corner position with a privacy screen of lush tropical foliage that wraps around both sides. The floor plan is spacious and well-designed with both living area and main bedroom opening onto the expansive courtyard to provide that indoor-outdoor vibe that is highly sought. You will love the quick and easy access from your terrace to the pool and gym or as shortcut through to Coronation Drive.

Regatta Riverside is an enviable place to call home with well-maintained resort style facilities and immaculately maintained tropical gardens creating inviting spaces to relax and enjoy. Walk across to the iconic Regatta Hotel's River Road Cafe for breakfast or lunch, enjoy drinks in The Courtyard or a special dinner in The Boatshed Restaurant. The lifestyle benefits also include easy access to surrounding facilities: Toowong Village Shopping; Park Road Cafes; bus, city cat and rail services; bikeways, walkways, and parklands; CBD, UQ and the Wesley Hospital; and major arterial roads connecting to all directions.

Living here is the epitome of convenience which will ensure the ongoing desirability of the complex and the surrounding area for owner occupiers, tenants, and investors alike.

Apartment Features -

- * 125 sqm - Internal 91 sqm plus 34 sqm of courtyard
- * Kitchen features generous counter space, granite bench top and good pantry
- * Stainless steel appliances –under bench oven, gas cooktop, canopy rangehood and new dishwasher
- * Air-conditioned lounge flows out to alfresco courtyard with lush tropical outlook
- * Separate study/MPR with bi-fold doors
- * Large private courtyard with direct access to manicured gardens, gym, and pool
- * Bedroom 1 has courtyard access, walk through robe and spacious ensuite
- * Bedroom 2 has direct access to main bathroom
- * Main bathroom with two-way access has shower over bath

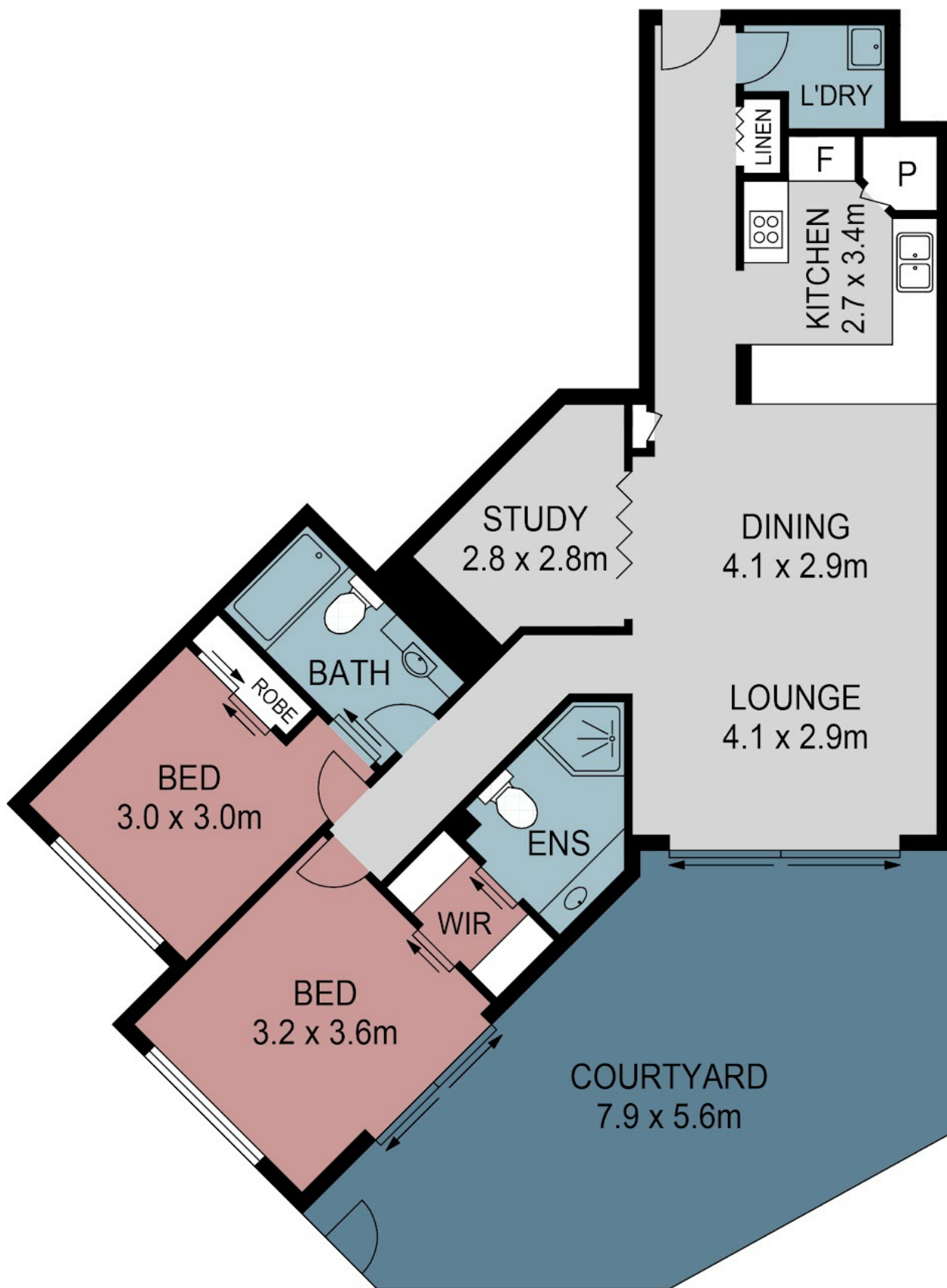
2 BED | 2 BATH | 1 CAR

PRICE:
Mid \$700k's

OPEN FOR INSPECTION:
N/A



Sue Barnes
0418988715
suebarnes@atrealty.com.au
www.atrealty.com.au



INTERNAL LIVING AREA : 91m²

TOTAL LIVING AREA : 126m²



Disclaimer: Please note this floor plan is for marketing purposes and is to be used as a guide only. All dimensions are estimates only and may not be exact measurements.

112-7 LAND STREET, TOOWONG

Sue Barnes

0418988715

suebarnes@atrealty.com.au

www.atrealty.com.au

This floor plan is illustrational and the measurements given are approximate.

It is recommended that further investigations are carried out for building purposes. Created by risephotography.com.au

@realty