



SOLD

**114 ACRE COUNTRY RETREAT, VIEWS,
DWELLING ENTITLEMENT TO BUILD YOUR
DREAM HOME, ROAD FRONT, SHED,
FIREPLACE, BACKS ONTO NATIONAL PARK,
ARE YOU READY?**

A really pleasant 114 acre property, with amazing mountain views, backing onto Morton National Park, featuring large new shed with fireplace, lots of cleared land with open spaces and a mix of bushland, just ideal and perfect for weekends away with the family, enjoy the country fresh air away from the city noise and hustle and bustle of traffic, get away from it all, enjoy a nice quiet bbq, ride quads, dirt bikes, ride horses, graze a few sheep, goats alpacas or just sit relax and watch the beautiful sunsets from your front porch, fully fenced, lots to offer those looking for the change to a country life and design and build your dream home, properties like this of this size with dwelling entitlement are rare and hard to find. Do not delay, book your personal inspection today. Call Elias on 0438184127.

3 BED | 1 BATH | 0 CAR

PRICE:
\$652,000

OPEN FOR INSPECTION:
N/A

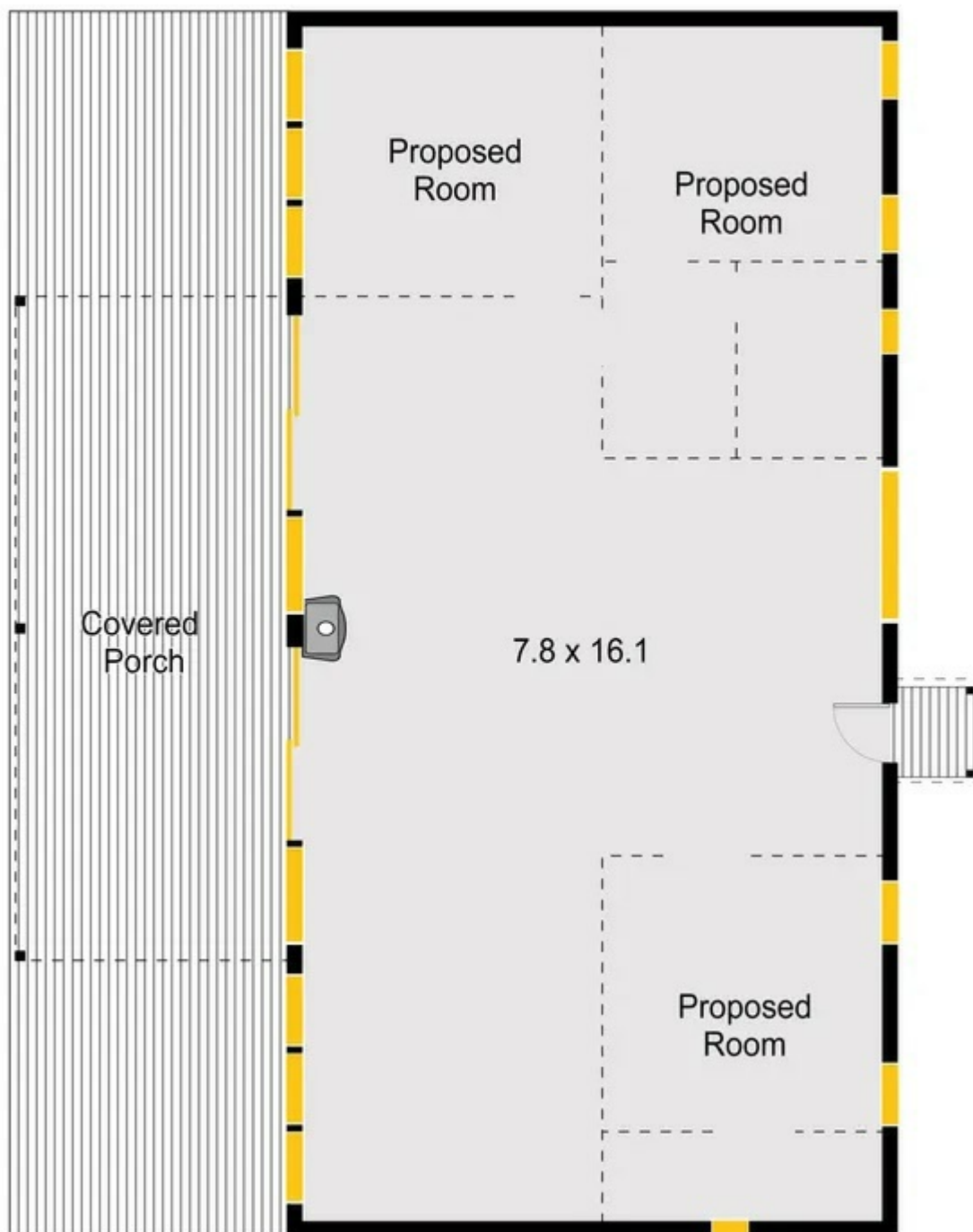


Elias Sleiman
0438184127
elias@atrealty.com.au
www.ruralnational.com.au

7369 Nerriga Road,
Wog Wog, NSW 2622

0 0 0

House total living space: 126m²



Disclaimer: Whilst every attempt has been made to ensure the accuracy of this floor plan. This is an artist's impression and as such intended as an approximate guide.

Produced by PATORAMA

Disclaimer: Please note this floor plan is for marketing purposes and is to be used as a guide only. All dimensions are estimates only and may not be exact measurements.