



SOLD

"LUCKY NO.8 MODERN TOWNHOUSE IN HOXTON PARK. WITH 3 BEDROOMS, 2 1/2 BATHROOMS, SPECIOUS OUTDOOR ENTERTAINMENT AREA, IT'S YOUR DREAM HOME!"

Welcome to your dream home in Hoxton Park, NSW. This stunning townhouse is located in one of the most sought-after areas in Australia, with all the modern amenities and conveniences at your doorstep. Welcome to Hoxton Park, where you can embrace a luxurious and comfortable lifestyle within a serene and peaceful neighbourhood.

This exquisite townhouse boasts 3 spacious bedrooms, perfect for accommodating a growing family or hosting guests. The master bedroom comes with an en-suite, providing you with your own private oasis within your home. The remaining three bedrooms are also generously sized.

As you step into this beautiful townhouse, you will be greeted with a seamless flow of space and light. The open plan living and dining area is perfect for entertaining guests and creating lasting memories with your loved ones.

This townhouse offers plenty of room for you to live and relax in comfort.

One of the highlights of this property is its stunning outdoor entertainment area. Imagine hosting a barbecue or enjoying a quiet evening with a glass of wine in this beautifully landscaped space. The secure parking and fully fenced yard provide a safe and private environment for you and your family to enjoy. The remote garage adds an extra layer of convenience, making it effortless to enter and exit your home.

Don't just take our word for it, come and experience the luxury and comfort of this townhouse for yourself. Book a private inspection and see why this property is the perfect place for you to call home. Don't miss this opportunity to secure your little piece of paradise in Hoxton Park, NSW.

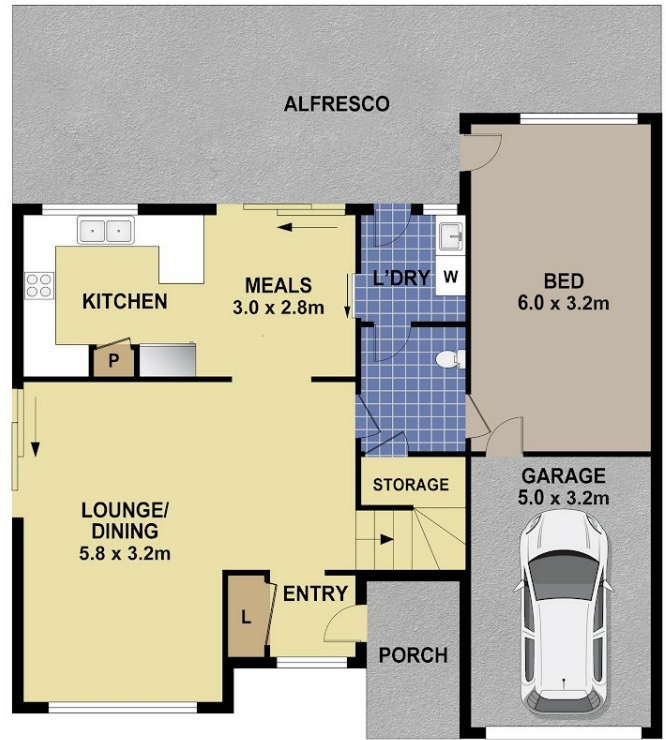
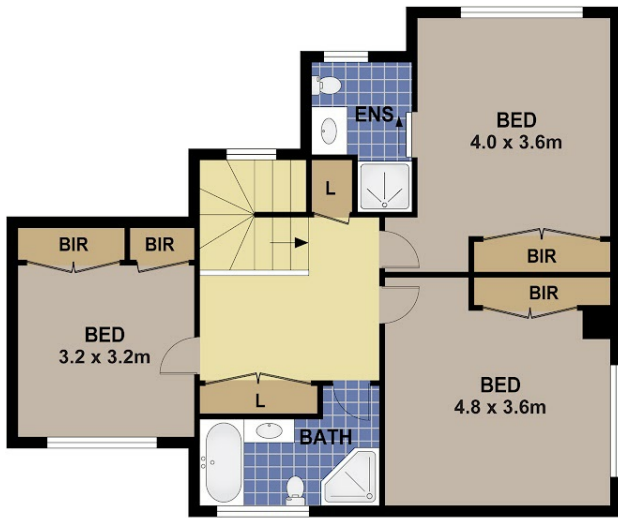
3 BED | 2 BATH | 2 CAR

PRICE:
\$845,000

OPEN FOR INSPECTION:
N/A



David Dawood
0460686888
daviddawood@ozdreamrealty.com.au
www.ozdreamrealty.com.au



8/34-36 FIRST AVENUE, HOXTON PARK

DISCLAIMER

PLANS SHOWN ARE FOR MARKETING PURPOSES ONLY. ALL DIMENSIONS ARE APPROXIMATE AND NOT TO SCALE. THEY ARE SUBJECT TO ERRORS AND INACCURACIES AND NO LIABILITY WILL BE ACCEPTED. INTERESTED PARTIES SHOULD MAKE THEIR OWN ENQUIRIES.
PRODUCED BY 0467 999920.

Disclaimer: Please note this floor plan is for marketing purposes and is to be used as a guide only. All dimensions are estimates only and may not be exact measurements.