



SOLD

PRIME LOCATION, CONVENIENT AND EASY LIVING TOWNHOUSE

Features:

- Three bedrooms upstairs, all with built in wardrobe, master with ensuite
- Bright and spacious open plan living and dining
- Carpet in all upstairs bedrooms
- Oversize kitchen with gas cooking and dishwasher
- Double lock up garage with remote control and internal access
- Low maintenance backyard

Location Benefits:

- 800m to Castle Towers
- 800m to Castle Mall Shopping Centre
- 850m to Castle Hill Metro Station
- 10-15 minutes walking to local cafes, and restaurants

School Catchment:

- 1.3 km to Castle Hill Public School
- 1.7km to Castle Hill High School

Total area: 222sqm

Strata: \$1,040.42/q

Water: \$173.29/q

Disclaimer: @realty believes that this information is correct but it does not warrant or guarantee its accuracy. Certain information has been obtained from external sources. All interested parties should make and rely upon their own inquiries in order to determine whether or not this information is in fact accurate. We do not accept any responsibility to any person for its accuracy and do no more than pass it on. Figures may be subject to change without notice.

3 BED | 2 BATH | 2 CAR

PRICE:

\$1,390,000

OPEN FOR INSPECTION:

N/A

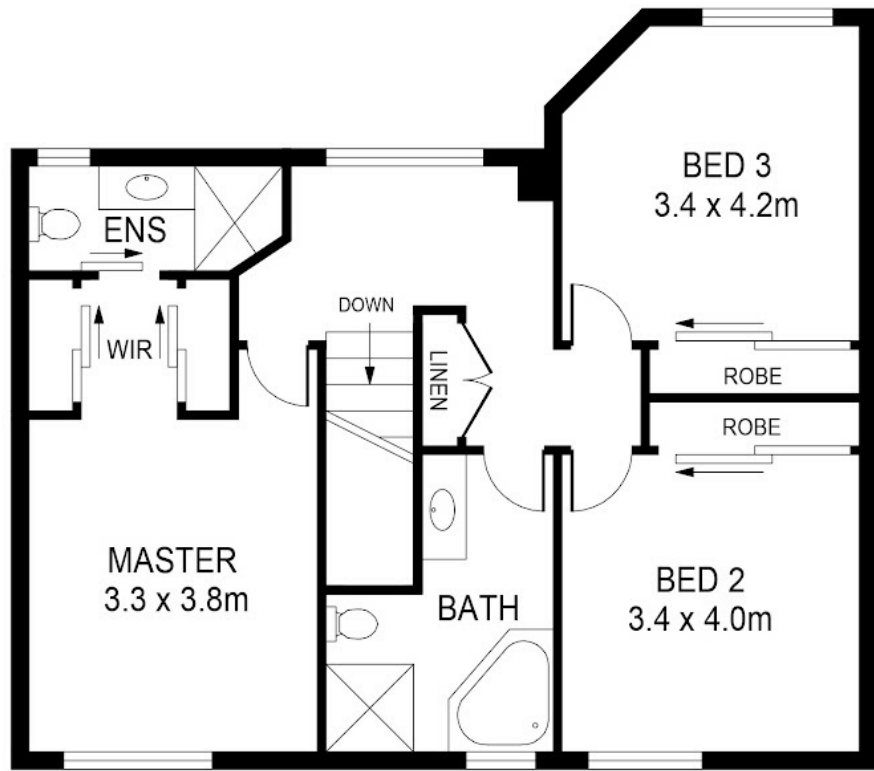


Ning Widjaja

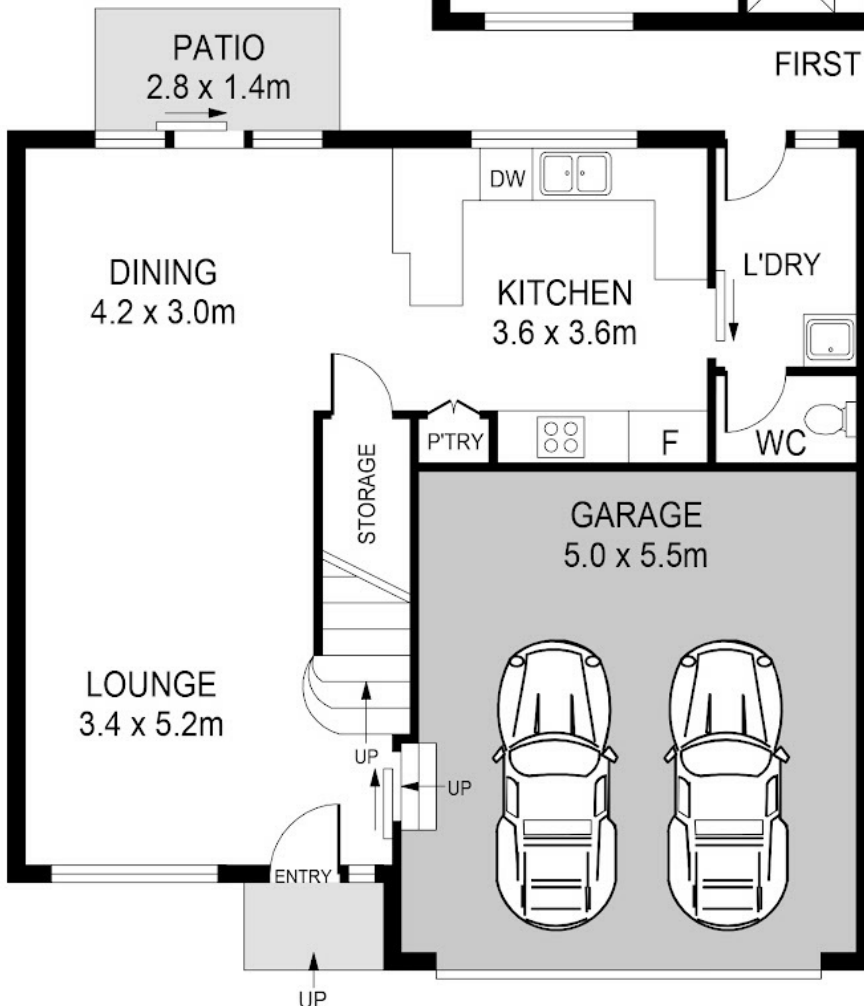
0416197919

ning@atrealty.com.au

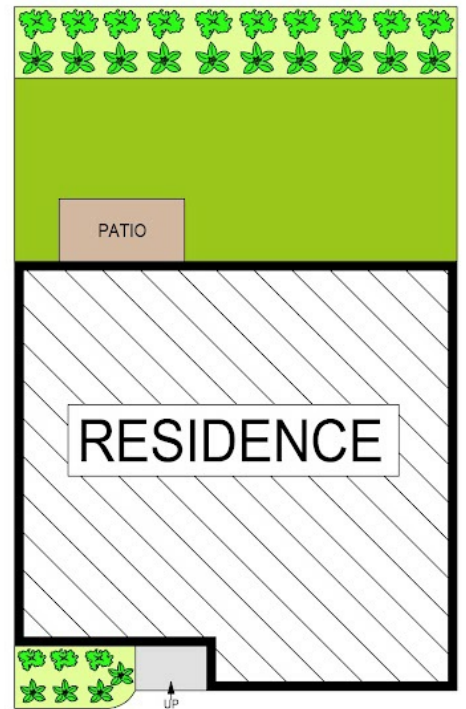
www.atrealty.com.au



FIRST FLOOR



GROUND FLOOR



SITE PLAN

Disclaimer: Please note this floor plan is for marketing purposes and is to be used as a guide only. All dimensions are estimates only and may not be exact measurements.

DISCLAIMER:

PLANS SHOWN ARE FOR MARKETING PURPOSES ONLY. ALL DIMENSIONS ARE APPROXIMATE AND NOT TO SCALE. THEY ARE SUBJECT TO ERRORS AND INACCURACIES AND NO LIABILITY WILL BE TAKEN BY @REALTY TY FOR INTERESTED PARTIES SHOULD MAKE THEIR OWN INQUIRIES.

Ning Widjaja
0416197919

ning@atrealty.com.au
www.atrealty.com.au

