



SOLD

SOLD !! JUST EXCHANGED...-YOUR DREAM HOME: A PERFECT BLEND OF COMFORT AND CONVENIENCE IN THE PRESTIGIOUS LIGHTHOUSE AREA.

This exquisite 4-bedroom, 2-bathroom residence offers ample space and sophisticated features tailored to discerning buyers.

Key Features:

- Spacious Layout: 4 bedrooms including a downstairs option for added privacy.
 - Fully Renovated Kitchen: Modern design catering to Master Chefs.
 - Breathtaking Views: Enjoy elevated mountain views from the upper floor deck.
 - Home Office Area: Boost productivity in the adjacent office space.
 - Double Garage with Internal Access: Stay dry with convenient access.
 - Family-Friendly Garden: Ideal for gatherings and entertaining.
 - Ducted Air Conditioning: Enjoy comfort year-round.
 - Dual Bathrooms: Convenient functionality on each floor.
 - Captivating Breeze: Experience tranquil airflow throughout.
 - New Ekodeck Non-Slip Wooden Path: Enhance accessibility and safety.
- Location Highlights:

Access to stunning beaches, vibrant shops, and top-rated schools.
Why This Home?

Sophisticated living combined with family-friendly features. Don't miss this opportunity in a prestigious neighborhood where many properties range from \$1-3 million. Contact Craig Alexander from @AtRealty on 0432718338 to schedule a showing. Act fast, this property won't last long!

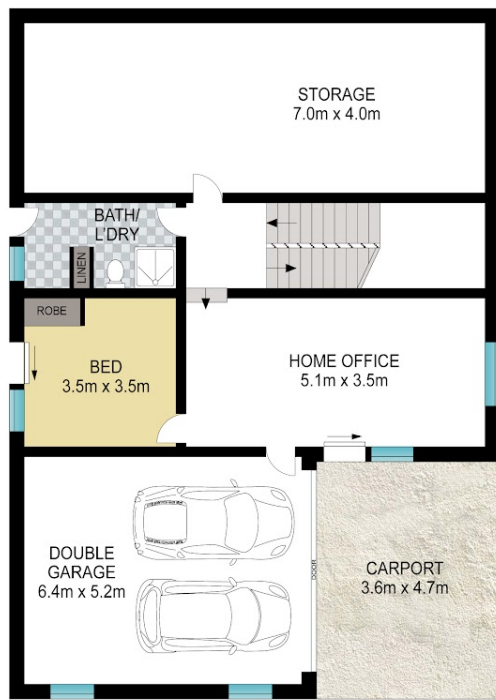
4 BED | 2 BATH | 2 CAR

PRICE:
\$935,000

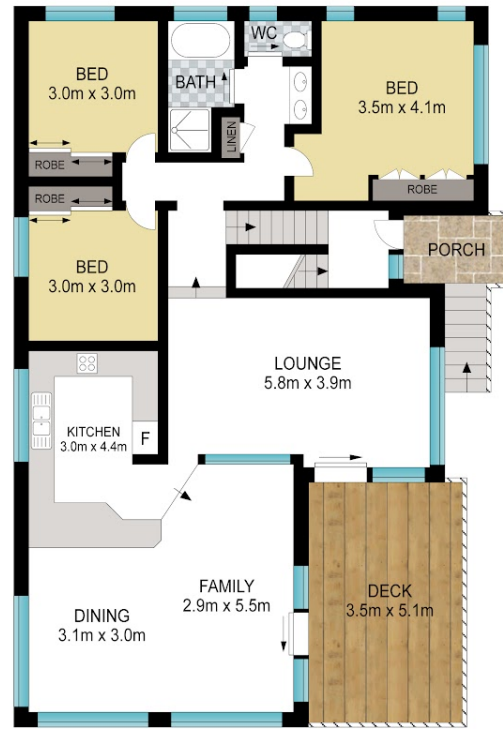
OPEN FOR INSPECTION:
N/A



Craig Alexander
0432718338
craigalexander@atrealty.com.au
www.atrealty.com.au



GROUND FLOOR



FIRST FLOOR

Disclaimer : Floorplans shown are for illustrative purpose only. All dimensions are approximate, not to scale, subject to errors and inaccuracies or omission and no liability will be accepted. Interested parties should undertake their own checks, due diligence, verification or measurements themselves.

Internal: 260 m²
 External: 20 m²
 Total: 280 m²

9 Montague Street, Port Macquarie



Disclaimer: Please note this floor plan is for marketing purposes and is to be used as a guide only. All dimensions are estimates only and may not be exact measurements.

