

SOLD

"ELEVATED AND PRIVATE BATHURST EXECUTIVE RESIDENCE"

FOR SALE via AUCTION
Onsite, 11am Thursday 28th March 2024
(if not sold prior)

282 WILLIAM ST, BATHURST, NSW 2795

4 BED / 2 BATH / 2 CAR / 1,733m²

PRICE GUIDE \$1.1m

"INNISFREE" Gaelic for "Your Tranquil Retreat"

Hidden back from the road is the private executive residence of "INNISFREE", synonymous with an Irish place of tranquil retreat, this property lives up to its namesake. Its high Bathurst elevation delivers spectacular views over the mountains from its designer entertainer's delight kitchen, home theatre and undercover AI Fresco deck. Innisfree offers you an outdoor spa, spa house (with 3rd toilet), water fountains, peaceful landscaped gardens featuring ornate hedging, walkways, roses, and Japanese Maples. This stunning property has been designed for entertaining and comes complete with a huge lounge / home theatre, screen and Bose surround speakers.

Walking distance to Charles Sturt University, Bathurst CBD and close to primary and secondary schools. Innisfree is truly in a great location.

What you will love about Innisfree:

- Secure automatic front gates.
- Guest parking for two cars inside front gate. Ideal for home office or professional use.
- Oversized 1,733m² block that has been professionally landscaped from front to back.
- Four bedrooms, 3 with built in robes, ceiling fan and LED lighting.
- Bedroom four forms part of a ground floor teenagers' retreat / granny flat with its own ground floor entry / bathroom and storage area.

4 BED | 2 BATH | 2 CAR

PRICE:
\$1,100,000

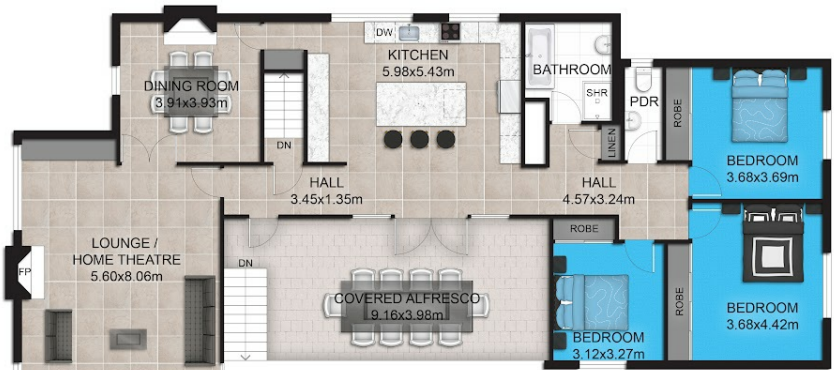
OPEN FOR INSPECTION:
N/A



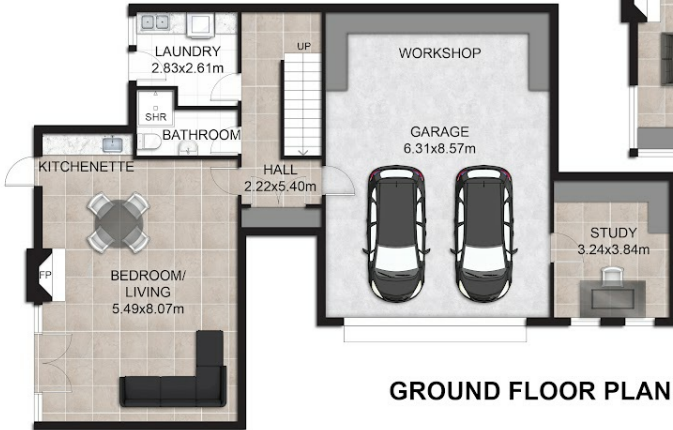
Mark Sullivan
0429954990
sully@atrealty.com.au
www.atrealty.com.au



NOT ACTUAL PLACEMENT



FIRST FLOOR PLAN



GROUND FLOOR PLAN

This floor plan including furniture, fixture measurements and dimensions are approximate and for illustrative purposes only. BoxBrownie.com gives no guarantee, warranty or representation as to the accuracy and layout. All enquiries must be directed to the agent, vendor or party representing this floor plan.



282 William St Bathurst NSW 2795

Disclaimer: Please note this floor plan is for marketing purposes and is to be used as a guide only. All dimensions are estimates only and may not be exact measurements.