

SOLD

EASY LIVING IN THE HEART OF WERRIBEE

Nestled in the centre of Werribee and offering a harmonious blend of elegance and comfort, this residence awaits its lucky new owners.

As you step through the front door, you'll be greeted by a spacious layout that is illuminated in natural light, creating an inviting atmosphere that is both warm and vibrant.

The heart of this home is its expansive living area, seamlessly flowing into a well-appointed kitchen that boasts ample counter space and a convenient breakfast bar. This open-plan layout affords the perfect balance of easy living and personal space, ensuring effortless access to the tranquil backyard and seamless connectivity to the rest of the house.

Accommodation comprises three generously sized bedrooms, each a sanctuary of peace with plush new carpet and built-in wardrobes. The master bedroom is a true retreat, featuring a full-ensuite and walk-in wardrobe.

Venture outside to find a lush, grassy backyard, a perfect spot for soaking up the sunshine or relaxing in the evenings. To the front, a single garage with electric remote access is complemented by additional driveway parking, accommodating several vehicles with ease.

Conveniently located just moments away from Bethany Catholic Primary School and Westgrove Primary School, this home is ideal for growing families. Additionally, its proximity to Pacific Werribee Shopping Centre adds to its lifestyle appeal. Nearby, the peaceful Werribee River Walking Trail provides a natural retreat, easily accessible from your doorstep.

With its combination of modern comforts, thoughtful layout, and prime location, this property is not just a house, but a place to call home.

3 BED | 2 BATH | 1 CAR

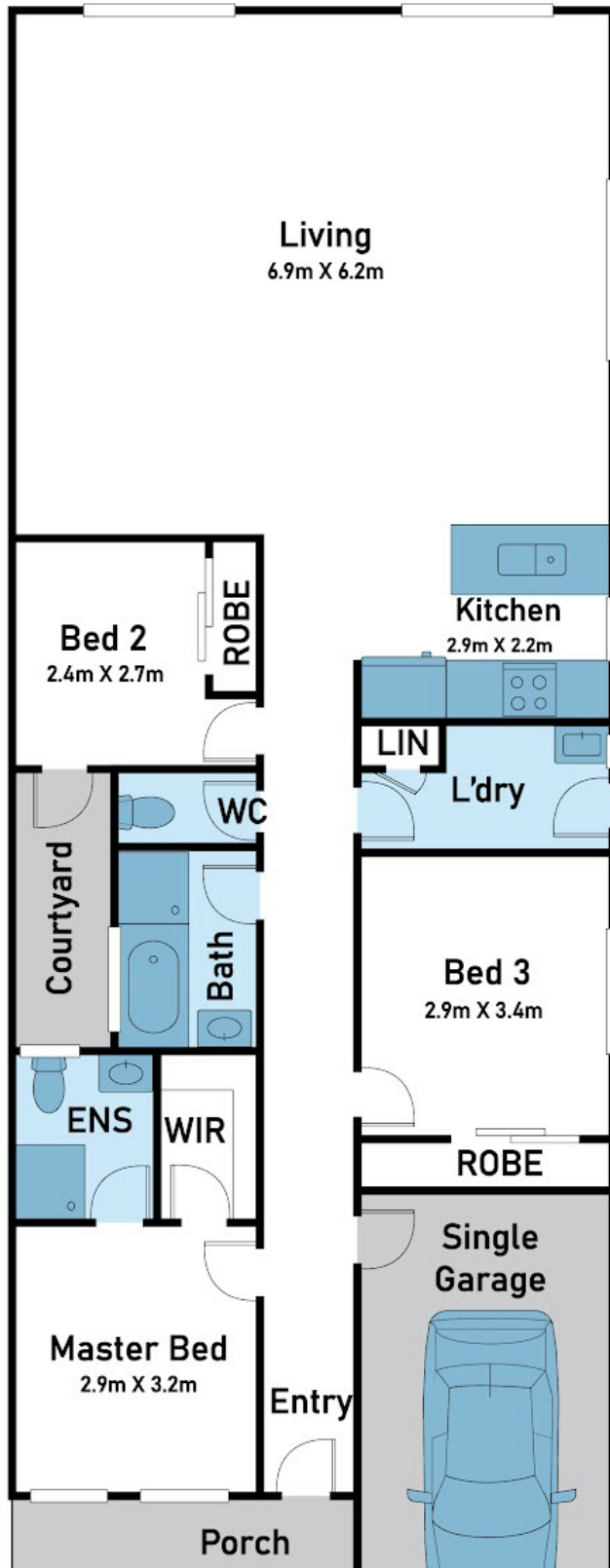
PRICE:
\$510,000

OPEN FOR INSPECTION:
N/A

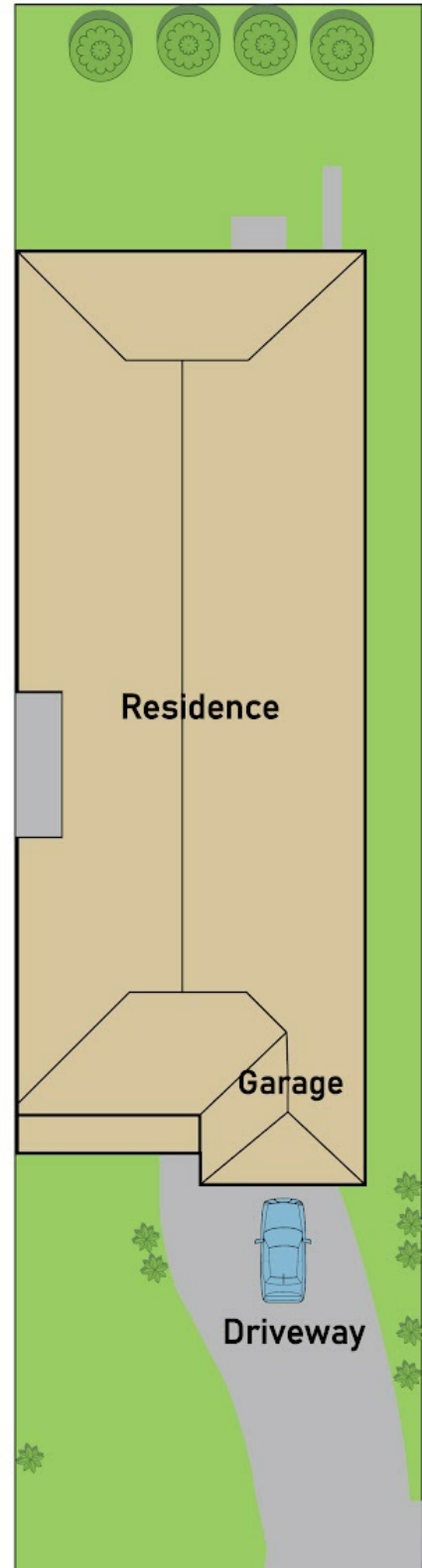


Samuel Hogan
0401315234
samuel@atrealty.com.au
www.atrealty.com.au

Floor Plan



Site Plan



Disclaimer: Please note this floor plan is for marketing purposes and is to be used as a guide only. All dimensions are estimates only and may not be exact measurements.



Samuel Hogan
0401315234
samuel@atrealty.com.au

www.atrealty.com.au

@realty

